



Is it good for wind power to generate high levels of wind power curtailment





Overview

In conclusion, wind energy curtailment is a necessary practice to maintain grid stability and prevent overloading. However, it can have negative impacts on the wind industry and the overall energy system. This practice is typically implemented by grid operators to maintain the stability of the electrical grid or to address specific. Curtailment is a reduction in the output of a generator from what it could otherwise produce given available resources, typically on an involuntary basis. Curtailment of generation has been a normal occurrence since the beginning of the electric power industry. Although a moderate amount of curtailed energy can be tolerated, huge amounts of wasted energy from near-zero operating cost renewable energy sources would be inefficient and unprofitable. Is wind and solar curtailment required?

High cost If curtailment of wind and solar would be strictly. With an increasing share of variable renewable energies in the power production, curtailment may become relevant to better manage the power system.



Is it good for wind power to generate high levels of wind power curtailment



WIND AND SOLAR ENERGY CURTAILMENT

If these options are costly or have been exhausted, curtailment could be appropriate to manage the surplus energy of wind and solar. Large amounts of curtailment, however, show lack of system ...

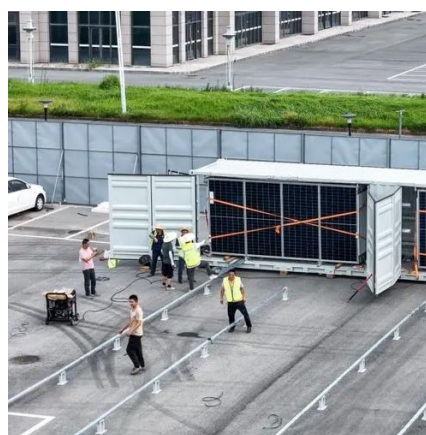


Wind and Solar Energy Curtailment: Experience and Practices in ...

The report provides case studies of curtailment experience and examines the reasons for curtailment, curtailment procedures, compensation, and practices that can minimize curtailment of wind and solar.

Why Is Wind Energy Curtailed

Wind curtailment is the deliberate reduction of electricity output from wind turbines, even when there is sufficient wind to generate power. This practice is necessary for managing an evolving ...



[What Is Curtailment in Wind Energy and How to Minimize It?](#)

While curtailment helps in maintaining grid stability and ensuring safety, it can negatively impact the financial performance of wind energy projects and reduce their potential environmental ...



Wind Energy Curtailment

In conclusion, wind energy curtailment is a necessary practice to maintain grid stability and prevent overloading. However, it can have negative impacts on the wind industry and the overall ...

Wind and solar energy curtailment: A review of international experience

The project found that large-scale offshore wind development could increase wind curtailment, mainly due to increased wind generation but also the additional variability from offshore ...



51.2V 150AH, 7.68KWH



What Is 'Curtailment' in the Context of Wind Energy and Why Does It

Curtailment is the intentional reduction of electric power generation from a wind farm below its maximum potential output. It occurs for several reasons, primarily when transmission ...

What is wind curtailment?



High curtailment indicates that the grid infrastructure or market conditions are not conducive to efficient wind energy utilization. This can lead to higher perceived risks and lower ...



Energy system impact of wind power with curtailment: national

In this paper, we explore the idea of using curtailment and P2H for increasing the energy system flexibility with a high share of wind power.

[Novel Curtailment Control Strategy for Wind Power Plants](#)

This paper is organized as follows. Section 2 introduces WPPs curtailment control strategies and inertial control method. Then, the proposed curtailment control strategy is described in ...





Contact Us

For catalog requests, pricing, or partnerships, please visit:

<https://id2market.eu>

Phone: +34 910 56 87 45

Email: info@id2market.eu

Scan the QR code to access our WhatsApp.

