



Is it good to pile firewood under photovoltaic panels





Overview

Solar panel fires (when things are correctly installed) are extremely rare. If you wanted the underside to stay dry. THIS IS AN. Thinking of adding a flat solar array next to my shed as I do want to generate more power at home, and it would also make a good place to store firewood to keep it out of the rain. I have seen news articles about commercial installs going up in flames, and it's usually flat arrays, as I guess they are. Scroll to the bottom of any page to find a sun or moon icon to turn dark mode on or off! Why embed wood in the ground?

My home was built in 2012, with fencing on wood posts added in 2017. Wooden fence posts in damp soil fell. Here are five smart ways to utilize the area underneath solar panels: 1. Chickens & Sheep The shaded, protected ground under solar panels makes an excellent shelter for chickens and sheep. I'm planning to use MCA-treated wood, which is supposedly less toxic to metals (and people), particularly the aluminum in the panel frames; also, around here at least, it's easier to. PV & firewood is an ideal combination for me at least! For example, this morning the glorious sun is out (at last!) and just cleared an old growth pine tree, pouring through my windows, reflecting off the newly fallen snow, and saturating my PV panels with wonderfully free photons and charging my. Is it okay to pile firewood under trees caused directly by PV installations, but the building on which they are mounted. An example of this would be a PV system being installed on a combustible/partially combustible roof, which does not necessarily present the risk comprehensively.



Is it good to pile firewood under photovoltaic panels



[Cheap but viable ground mount solutions?](#)

My setup has 8 posts, then treated 2x6's for the frame work. 32 panels are attached to the 2x6's. You can't see it in the pic, but there are also a pile of cross-bracing between all the posts and ...

[Making the Most of Space: Utilizing Underneath Solar Panels](#)

Firewood stays dry and well-aerated under solar panels. Stack it off the ground on pallets to prevent rot, and you've got a perfect, out-of-the-way storage area that doesn't take up extra yard ...

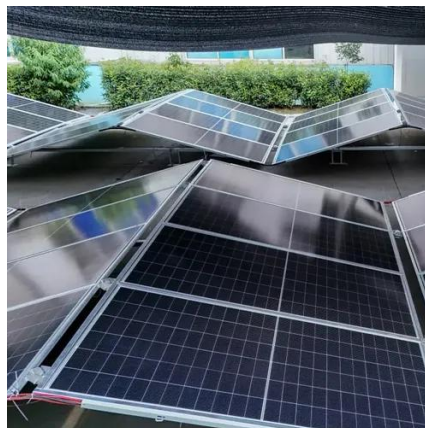


[A simple DIY Timber Frame PV Ground Mount](#)

The PV panels are mounted to commercially available aluminum rails made for easy mounting of PV panels. There are two of these rails for each of the sets of 3 panels. The rails are ...

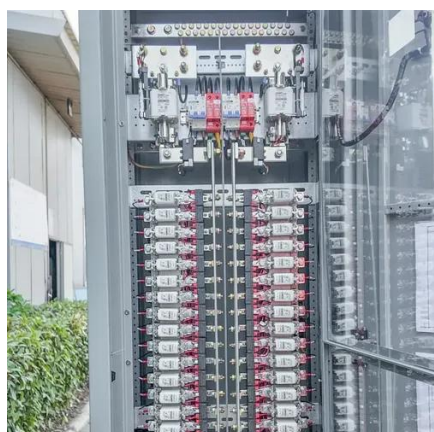
Using wood/plank/barge as mounting rails for solar panels on the roof

Is there any issues with using wood/plank/barge as mounting rails for solar panels on the roof? It's much cheaper but it's almost no one using it. Is there a reason not to use it? I found just one ...



Is it okay to pile firewood under the photovoltaic panels

panels with minor cracks, repair may be a viable option. Various techniques, such as encapsulation materials or sealants, can address small cracks in solar cells. These repairs should be carried out by ...



How common are solar panel fires? Safe to store firewood under

Thinking of adding a flat solar array next to my shed as I do want to generate more power at home, and it would also make a good place to store firewood to keep it out of the rain.



Photovoltaics & Firewood: An Ideal Combination?

Heating water with firewood is an untapped area for many PV users. Since I have started heating water with firewood during the summer months (outdoor stove and carry the water in) I have cut my ...



Chimney For Woodstove With



Catalytic Combustor Next To Solar Panels

It might be prudent to add a 'critter guard' around the array in this case as well, since I'd be far more concerned about sparks getting blown underneath the panels than landing on the glass on top.



[My DIY 1640Wp solar roof for firewood storage : ...](#)

If there's one thing I love more than a nice rack of solar panels, it's wood storage! Nice job mate!

Why embed wood in the ground?

If you are using a wood mount for your array you should use critical structure treated posts with no cut ends below ground, mounted in stone and concrete (minimize direct soil contact) ...



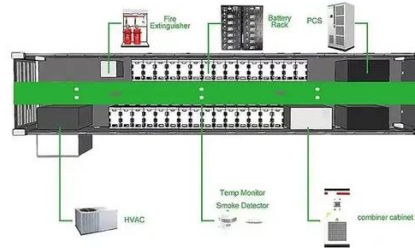
[mounting panels to treated-wood frame](#)

I'm planning to use MCA-treated wood, which supposedly less toxic to metals (and people), particularly the aluminum in the panel frames; also, around here at least, it's easier to find ...

Timber-Framed Solar Canopies



Traditionally, foundations for post-and-beam structures have a footer under every post, with a tie-down at each location; this approach adds complexity, time, and money to the construction process.





Contact Us

For catalog requests, pricing, or partnerships, please visit:

<https://id2market.eu>

Phone: +34 910 56 87 45

Email: info@id2market.eu

Scan the QR code to access our WhatsApp.

