



Is the current of solar panels in parallel the sum





Is the current of solar panels in parallel the sum



Solar Panel Series Vs Parallel: Wiring, Differences, And Your Right

In this tutorial, I'll show you how to wire solar panels in series and how to wire them in parallel. Once we've got that covered, I'll also explain the difference between these two ...

Are Solar Panels Connected In Series Or Parallel?

In a parallel setup, the voltage stays constant, but the current is the sum of the currents through each panel. This means the total current supplied is the cumulative total of the currents of individual ...



Solar Panels Series vs Parallel: Understanding and Difference

For a quick explanation, the main difference between solar panels connected in series and parallel is the output voltage and output current. The output voltage of a series-connected solar panel adds up, ...

Series vs Parallel -

When connected in parallel, the voltage of the system stays the same as the voltage of a single panel, and the current, or the amps, are added together to be twice the current of a single panel.



Solar Panels In Series Vs Parallel Wattage

Parallel Connections: Parallel wiring increases the overall current output while maintaining the voltage of a single panel. This is advantageous in situations where shading might ...



Parallel Connected Solar Panels For Increased Current

When connecting solar panels together in parallel, the total voltage output remains the same as it would for a single panel, but the output current becomes the sum of the amperage of each ...



How Do Solar Panels Connect In Series Vs Parallel?

Parallel connections join positives and negatives separately, summing currents while voltage stays fixed. For instance, two 24V panels in series create 48V, whereas parallel keeps 24V but doubles ...

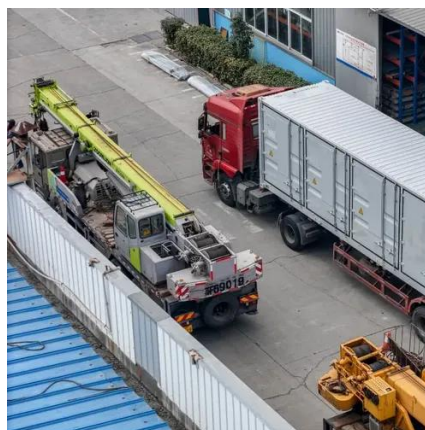


How to Hook Solar Panels Together in



Series or Parallel

In this arrangement, the total current output of the array is the sum of the current from each panel, while the system voltage stays the same as the voltage of a single panel.

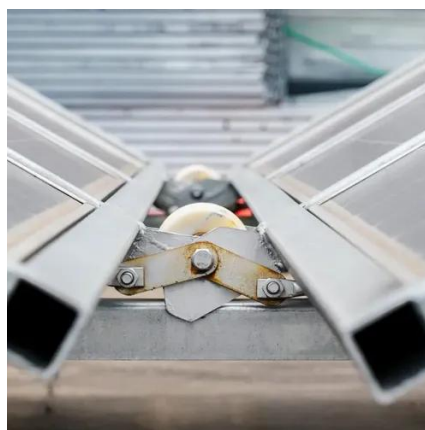


Series vs. Parallel , Renogy US

Connecting your panels in parallel will increase the amps and keep the voltage the same. This is often used in 12V systems with multiple panels as wiring 12V panels in parallel allows you to keep your ...

What is Parallel Connection in Solar Panels?

When solar panels are connected in parallel, the overall voltage output of the system remains equal to that of a single panel. However, the total output current increases as the sum of the ...





Contact Us

For catalog requests, pricing, or partnerships, please visit:

<https://id2market.eu>

Phone: +34 910 56 87 45

Email: info@id2market.eu

Scan the QR code to access our WhatsApp.

