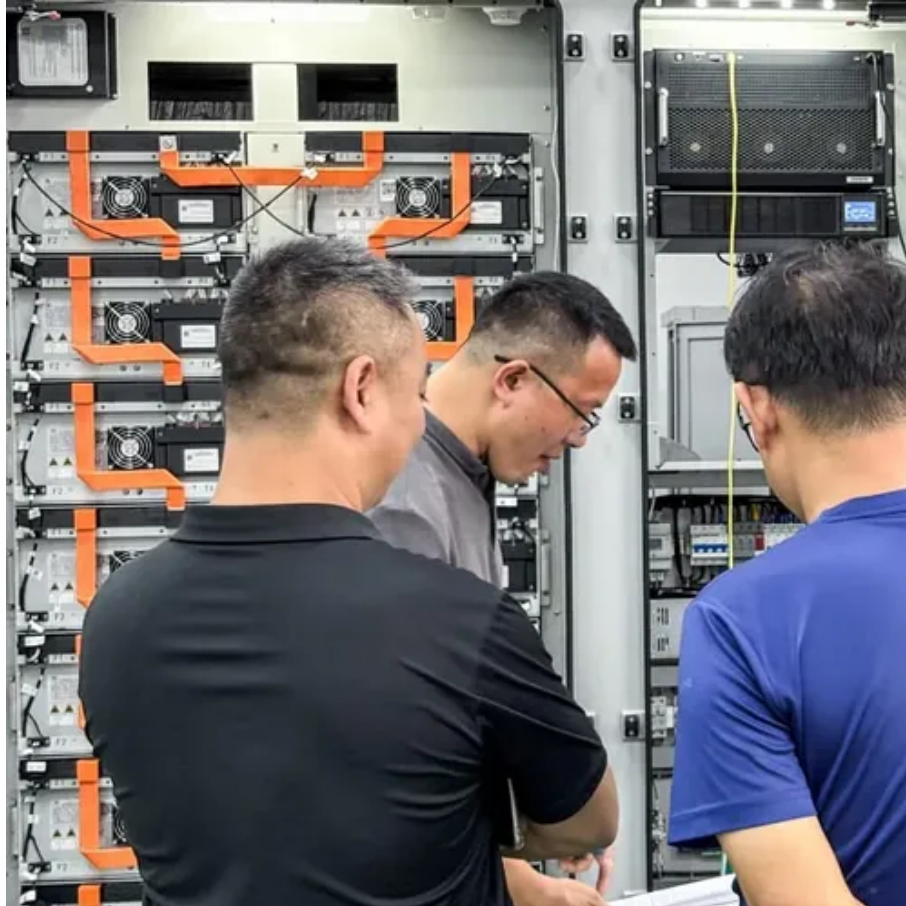




Is the light guide plate a photovoltaic glass plate





Overview

A Light Guide Plate (LGP) is an optical component commonly used in the manufacturing of backlights for LCD displays and luminaires. The materials used for solar light guide plates include transparent polymers, glass composites, and specialized coatings, 2. These plates are crucial in. At the core of this evolution is Light Guide Plate (LGP) technology, which transforms directional LED light into uniform illumination, enabling sleek designs without compromising performance. By harnessing the principles of total internal reflection and microstructured surfaces like micro-dots. G-LGP product is a new attempt of Almaden in the field of electronics. Almaden LGP has good light guiding properties, high fiber conversion rate, high luminous efficiency in the same area and low power consumption, which can be used under any kind of light source. With mature technology, Almaden. 1.



Is the light guide plate a photovoltaic glass plate



Glass light guide plate (G-LGP)_Photoelectric glass_Changzhou ...

Almaden LGP has good light guiding properties, high fiber conversion rate, high luminous efficiency in the same area and low power consumption, which can be used under any kind of light source.

Light Guide Techniques Using LED Lamps

What Is a Light Guide? A light guide is a device designed to transport light from a light source to a point at some distance with minimal loss. Light is transmitted through a light guide by means of total ...



High-efficiency white-light solar window using waveguide glass plate

The waveguide plates consist of a diffuser and patterned glass, which scatters and guides the incident light to GaAs cell arrays at the window frame edges. These were designed and ...



Light guide plate photovoltaic panel

The two main types of solar PV cell technologies considered for use in PV-T collectors are either based on crystalline silicon wafers or thin-film semiconductor materials



What is a Light Guide Plate? Working Principle, Manufacturing ...

A light guide plate utilizes the high transparency and excellent refractive properties of acrylic (PMMA). On the optical-grade acrylic sheet, laser-etched dots, lines, or patterns are created ...



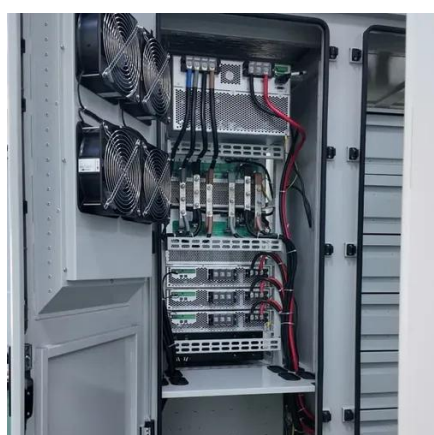
[What is Glass Light-Guide Plate? Uses, How It Works & Top](#)

The Glass Light-Guide Plate is a specialized optical component designed to distribute light evenly across displays and lighting systems. It is made from high-quality glass or transparent



Light Guide Plate: Your Ultimate Guide to LED Lighting Solutions

A light guide plate (LGP) is a transparent material, typically acrylic or glass, designed to distribute light evenly for applications like LCD backlighting, signage, and illumination.



Light Guide Plates (LGP)



A Light Guide Plate (LGP) is an optical component commonly used in the manufacturing of backlights for LCD displays and luminaires. In lighting applications, it is typically an optical-grade acrylic sheet ...



Corning Iris Glass , Light-Guide Plate Display Glass , Corning

Corning Iris(TM) Glass is a glass light-guide plate (LGP) for edge-lit LCD TVs. Due to its intrinsic rigidity and dimensional stability, it outperforms the incumbent technology - plastic - and allows TV ...

[What is the material of solar light guide plate? , NenPower](#)

The basic principle of a solar light guide plate involves guiding sunlight from a collection point to specific areas for illumination. Constructed from materials designed to optimize light ...





Contact Us

For catalog requests, pricing, or partnerships, please visit:

<https://id2market.eu>

Phone: +34 910 56 87 45

Email: info@id2market.eu

Scan the QR code to access our WhatsApp.

