



Is the surface of photovoltaic panels smooth





Overview

Examine the Surface: The tempered glass surface of the panel should be smooth and free from foreign objects. Some manufacturers may neglect to clean silicone droplets from the glass surface, which can impact energy generation efficiency. Maximizing a solar cell's energy absorption is key for the technology's survival as a renewable resource. This movement can result in the destruction of surface morphology through erosion or the formation of a dust film that prevent sunlight from reaching the. Ever touched a solar panel and felt that smooth, cool surface?

That's specially engineered glass working hard to convert sunlight into electricity. As solar energy adoption grows globally – with installations increasing by 34% annually according to the International Energy Agency – understanding. Why is it important to investigate the roughness of solar panels.



Is the surface of photovoltaic panels smooth



[Designs for photovoltaic glass surface texturing to improve](#)

Textured surfaces can reduce reflections and glare intensity. In this work, three textured glass surfaces are described and simulated numerically over a wide range of AOIs. The anti ...

Is There Glass on the Surface of the Photovoltaic Panel? Key Insights

Ever touched a solar panel and felt that smooth, cool surface? That's specially engineered glass working hard to convert sunlight into electricity.



What is the effect of panel surface texture on N Type Solar Panels

A smooth panel surface might look nice, but it's not the best for sunlight absorption. A smooth surface can cause a lot of the sunlight to bounce right off, especially if the light hits at an angle.

Effects of surface morphological parameters on cleaning efficiency of

A consistent smooth surface in any weather condition can ensure optimal cleaning efficiency. If surface roughness changes, the cleaning mechanisms will change accordingly.



How to Check the Quality of Solar Panels in 3 Simple Steps

Examine the Surface: The tempered glass surface of the panel should be smooth and free from foreign objects. Some manufacturers may neglect to clean silicone droplets from the glass ...

Why is it important to investigate the roughness of solar panels.

A relatively smooth substrate leads to a larger particle size in the absorber layer and to an increase in induction potential and efficacy in the forthcoming solar panel.



The surface of photovoltaic panels is not that smooth

According to Maghami et al., if the surface of the photovoltaic panel is not smooth, if it is horizontal, or if it is sticky, it is conducive to the accumulation of dust.

Surface Roughness and Features of a



Solar Cell

Studies have shown that surface roughness plays a pivotal role in the reflectance of light. The initial layer of glass must be as smooth as possible to mitigate the reflectance of light, but the subsequent ...

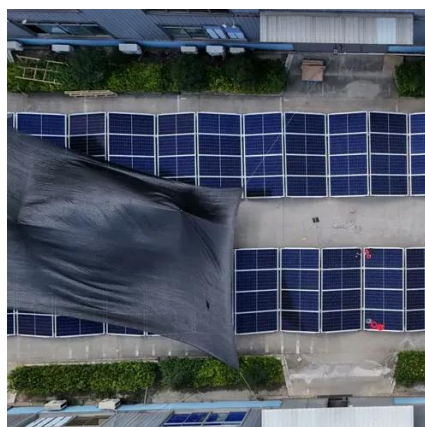


Is the surface of photovoltaic panels smooth

Considering multiscale surface texturing of PV panel glass cover, represented generically as fractal surfaces, the study comprehensively investigates the effect of texturing

(PDF) Surface Roughness and Features of a Solar Cell

Maximizing a solar cell's energy absorption is key for the technology's survival as a renewable resource. The multiple layers of coating and glass protection allow for the absorption,





Contact Us

For catalog requests, pricing, or partnerships, please visit:

<https://id2market.eu>

Phone: +34 910 56 87 45

Email: info@id2market.eu

Scan the QR code to access our WhatsApp.

