



# Is there less solar power generation in winter





## Is there less solar power generation in winter

---



### Solar output in the winter: what to expect, and how to optimize it

Shorter daylight hours One of the primary factors affecting solar output in winter is the shorter duration of daylight. With fewer daylight hours available, solar panels have less time to ...

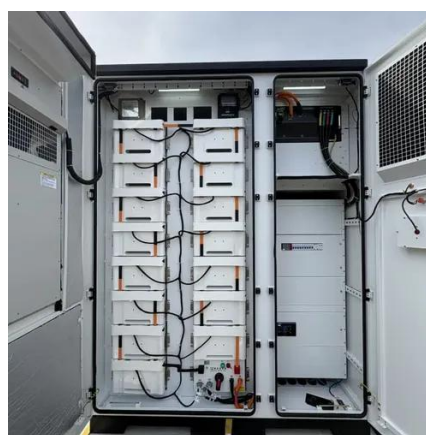


### Solar Performance in Winter, Spring, and Fall Compared to Summer

Even in warmer climates, solar sales reps would have to explain that with fewer hours of sunshine in the winter, solar performance drops, in some cases, more than you would expect. While ...

### Are My Solar Panels Producing Power in the Winter?

As we embrace the winter season, many homeowners and businesses with solar panel installations may notice a dip in their energy production. The colder months bring about unique ...



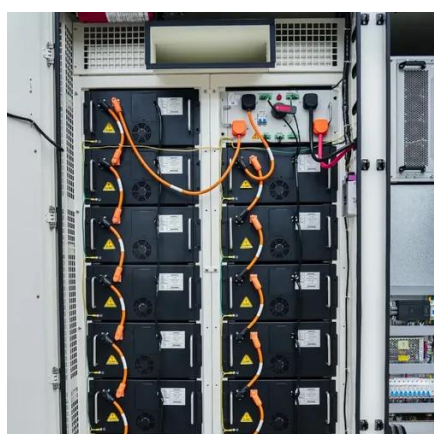
### In which season does solar power generation decrease?

In summation, the variability in solar power generation is intricately linked to seasonal changes and local environmental conditions. Understanding these diverse factors--ranging from the ...



### Factors affecting photovoltaic power generation in winter

In winter, daylight hours are shorter, the solar altitude angle is at its lowest, and solar irradiance is the weakest of all seasons. As a result, the seasonal output curve of photovoltaic (PV) power plants ...



### Why Your Solar Panels Produce Less in Winter Explained

One of the biggest mistakes people make with solar energy production by season is ignoring how much less power they get in winter, which leads to surprise bills. fix that by planning ...



- LiFePO<sub>4</sub> Battery,safety
- Wide temperature: -20~55°C
- Modular design, easy to expand
- The heating function is optional
- Intelligent BMS
- Cycle Life:> 6000
- Warranty:10 years



### **What Really Happens to Solar Panels' Productivity in Winter?**

There's a Seasonal Balance in Solar Energy Production While winter energy production might be lower than in summer, it's important to view solar energy as a year-round solution. Solar ...

### Why do solar panels struggle in winter?



Did you know that in winter, solar panels produce only 10% of their summer output? In a country like the Netherlands, where we lead the world with 3.5 solar panels per person, this seasonal ...



- All In One**  
Integrating battery packs
- High-capacity**  
50-500kWh
- Degree of Protection**  
IP54
- Operating Temperature Range**  
-20-60°C (Derating above 50 °C)
- Intelligent Integration**  
integrated photovoltaic storage cabinet
- Rated AC Power**  
50-100kW
- Altitude**  
3000m(>3000m derating)

## Solar Panel Output Winter Vs Summer

Solar Panel Output Winter Vs Summer: During winters, the optimum power generation level of the solar panel is lower than that of summers.

## Why Solar Produces Less in Winter

Learn why solar panels produce less power in winter and how Texas homeowners can maintain strong performance with simple, effective system care.





## Contact Us

---

For catalog requests, pricing, or partnerships, please visit:

<https://id2market.eu>

Phone: +34 910 56 87 45

Email: [info@id2market.eu](mailto:info@id2market.eu)

Scan the QR code to access our WhatsApp.

