



# Lithium battery cell voltage





## Lithium battery cell voltage



### New Li Time battery put on charger overnight and voltage dropped

I just purchased 2 - 100ah Li Time batteries. I checked them both upon receipt and they were both at 13.11V. I put them, one at a time, on a Victron IP22 12/30 charger, set it to Li ion, left it ...

### Dead lithium battery

You can parallel a lead acid battery to get charger to activate charging. Once SOK cells rise above their low cell voltage reset value the BMS will come back on and you can charge it normally.



### 14.2, 14.4, 14.6

14.0-14.6V can all get a LFP battery fully charged. Lower just takes longer. 13.8 is enough to get them to 98%+ SoC 14.4V is the sweet spot because 14.6V requires perfect cell balance to ...

## Lithium Battery Voltage Chart Guide

Learn how to read a lithium battery voltage chart, including LiFePO4, 12V, 24V, and 48V systems. Simple explanations, real examples, and ...



### [LiFePo4 Charge drop after charging , DIY Solar Power Forum](#)

Overpotential voltage bump up in cell open circuit no load terminal voltage required to drive the migration of lithium ions depends on charge current amount. The greater the charge ...

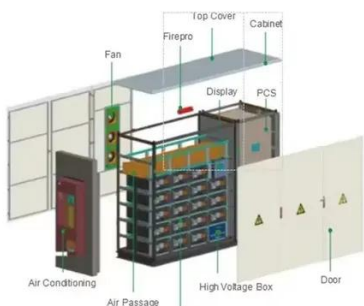
### [16s Lifepo4 48v Bulk/Float settings , DIY Solar Power Forum](#)

If I set float to 3.4 per cell, the Growatt stops charging the battery and won't go past 3.4v/cell So my initial thought of setting it as high as possible, for this inverter, seems to be the way ...



### **Renogy Battery Error 04 Battery Over-Voltage Protection / Battery Cell**

According to the spec from Renogy, battery overvoltage protection is triggered when the battery is  $\geq 14.8$  volt, and the battery cell over-voltage protection is triggered when the battery cell ...



### **LiFePO4 Voltage Chart?**



Hi guys, I was looking through the mobile-solarpower website, and on this page I found a battery voltage chart for LiFePO4 batteries. But I noticed it wasn't showing the exact voltage ...

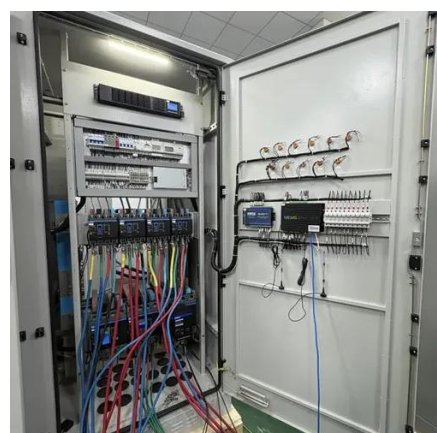


### [Lithium Battery Voltage Chart: The Ultimate 2025 Guide](#)

Voltage is the fundamental measure of a lithium battery's electrical potential, serving as the primary indicator of its state of charge and health. ...

### [Lithium-Ion Battery Cell Voltage: What You Need to Know](#)

Typically, these cells operate at a nominal voltage of 3.6V to 3.7V, with a full charge voltage of 4.2V and a discharge cutoff around 3.0V. ...



### [What Is Lithium Cell Voltage? Explained Simply](#)

Lithium cell voltage is the electrical pressure between a single battery cell's positive and negative terminals. In simple terms, it's the force that pushes electrons through a circuit, powering ...

### [When is cell imbalance considered serious](#)



## [for new cells?](#)

By: Rob Beckers You have just sold your first-born into slavery, remortgaged the house, and bought yourself a lithium-ion battery! Now you want to know how to maintain your precious new ...



## [Recovering very low voltage LiFePO4 cells](#)

In one case, I recovered an 8-cell (8S1P) 100Ah battery where the total pack voltage was 3.7V measured directly on the battery (yes, bypassing the BMS). Each cell was around 0.5V.



## **Comprehensive Guide to Lithium Battery Cell Voltage During Charging and**

Understand lithium battery cell voltage during charging and discharging, including safe ranges, cutoff limits, and how voltage ...



## **Lithium Battery Voltage Chart**

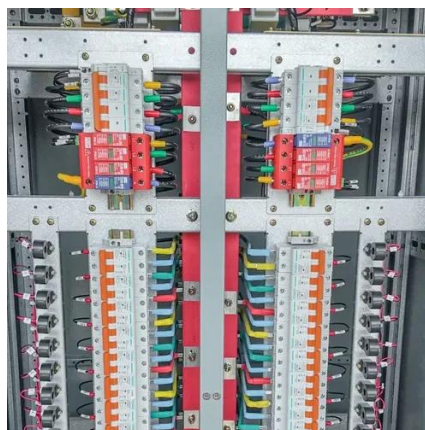
Understanding lithium battery voltage isn't just technical--it's practical. Whether you're off-grid living, powering a solar setup, or managing a ...

## [General LiFePO4 \(LFP\) Voltage to SOC](#)



## [charts/tables 12/24/48V](#)

General LiFePO4 (LFP) Voltage to SOC  
charts/tables 12/24/48V 2021-01-18



## **Lithium-Ion Battery Voltage: How Many Volts And Types Explained In**

The standard voltage of a lithium-ion battery typically ranges from 3.0 to 4.2 volts per cell. This voltage range is crucial for the battery's performance and longevity.

## [LiFePO4 Voltage Charts \(1 Cell, 12V, 24V, 48V\)](#)

The ideal voltage for a lithium-ion battery depends on its state of charge and specific chemistry. For a typical lithium-ion cell, the ideal voltage ...



## [Lithium-Ion Battery Voltage Breakdown: 12V, 24V, 48V ...](#)

This guide breaks down what you need to know about lithium-ion battery voltage, from charge levels to real-world applications, helping you make ...



## Contact Us

---

For catalog requests, pricing, or partnerships, please visit:

<https://id2market.eu>

Phone: +34 910 56 87 45

Email: [info@id2market.eu](mailto:info@id2market.eu)

Scan the QR code to access our WhatsApp.

