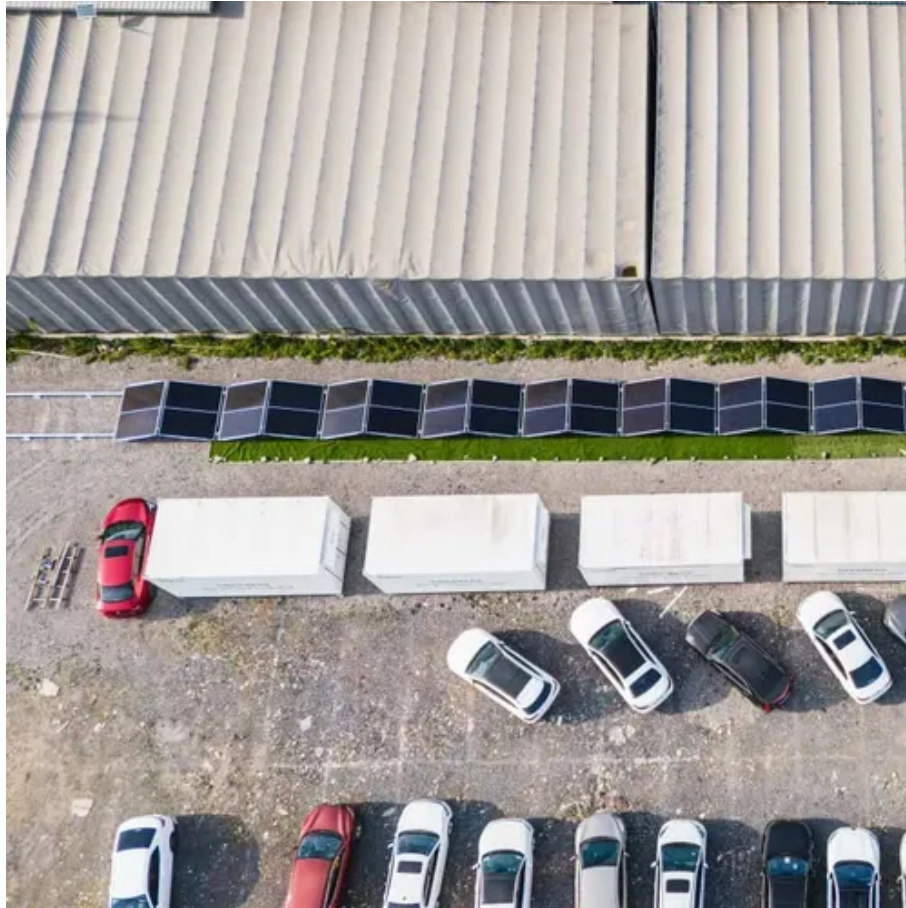




Maintenance Manual for 30kWh Outdoor Energy Storage Cabinet in Office Buildings





Maintenance Manual for 30kWh Outdoor Energy Storage Cabinet in O



[Maintenance plan for outdoor energy storage cabinets](#)

This article delves into the durability of outdoor energy storage cabinets, focusing on their design, materials, and maintenance practices, concluding with key considerations for selecting the

[373 Outdoor Rack Maintenance manual-ENG](#)

o The cabinet contains high-voltage electrical equipment. Before starting maintenance, the necessary safety precautions must be taken. o Before starting maintenance work, ensure that the power supply ...



[Commercial and Industrial Energy Storage Cabinet](#)

During installation, operation, and maintenance, it is necessary to clean the accumulated water, ice, snow or other debris on the top of the cabinet first, and then open the cabinet door to prevent the ...

Liquid-cooling Energy Storage Systems Operation & Maintenance

About This Manual This manual describes the commissioning, troubleshooting, and maintenance of the ESS.



[INSTALLATION, OPERATION, AND MAINTENANCE MANUAL ...](#)

This manual contains important instructions that must be followed during installation and maintenance. The product is designed and tested in accordance with international safety requirements, however as ...



[805-0094 AES Cabinet Operation and Maintenance Manual](#)

It is intended for use by qualified personnel involved in the installation, commissioning, inspection, servicing, and routine system maintenance of the AES Cabinet Energy Storage System.



[All in One Li-ion Energy Storage System User Manual](#)

If the energy storage cabinet is unused for a long time, it will cause irreversible damage to the battery, so please make sure to carry out regular maintenance.



[30KW/90KWH Commercial & Industrial](#)



ESS - Outdoor Cabinet

The outdoor energy storage cabinet, with the standard configuration of 30 kW/90 kWh, is composed of a battery cabinet and an electrical cabinet. It can apply to demand regulation peak shifting C& I energy ...



30KWh Outdoor Photovoltaic Energy Cabinet

It can be used in various harsh outdoor environments with a salt spray time of 500 hours. The product shell is made of aluminum alloy material, which is light and can be manually carried. It is ...

Product features:

Abundant configuration o Diversified selection of equipment capacity; Can be integrated with monitoring system; Energy storage system series Low Voltage Distribution - Areacommercial and industrial ESS ...





Contact Us

For catalog requests, pricing, or partnerships, please visit:

<https://id2market.eu>

Phone: +34 910 56 87 45

Email: info@id2market.eu

Scan the QR code to access our WhatsApp.

