



Mobile Telecommunication Base Station Equipment Installation



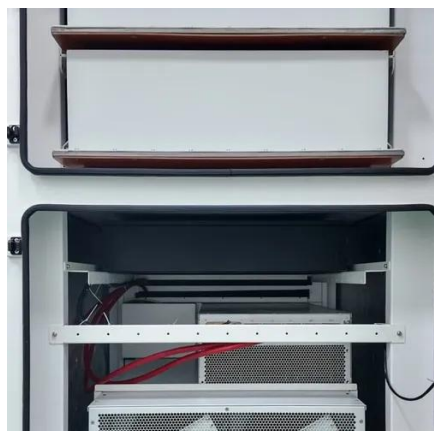


Overview

Installing a Base Transceiver Station (BTS) is a critical step in building mobile communication networks. Here's a step-by-step guide to the process: 1. Site Acquisition and Survey Objective: Select and acquire a suitable location for the BTS. Activities: Identify coverage gaps or expansion areas. Often referred to as the brain center, this includes: Baseband Unit (BBU): Handles baseband signal processing. Power Supply System This. Taking the post, the comments, some help from ChatGPT, here is a detailed process of planning, constructing, and commissioning a mobile network site. Site Planning and Design: This phase involves assessing the need for a new mobile. The mobile communication base station refers to radio wireless transmission between mobile communication switching center and telephone terminal. Since a fixed location allows one to install a much taller antenna than an antenna on a vehicle, you can get significantly more potential range. Remember, the longer the CB antenna, the more.



Mobile Telecommunication Base Station Equipment Installation



[Mobile Base Station , Complete Solution for Greenfield ...](#)

Overview The Mobile Base Station is a fully transportable, low impact solution that allows quick installation of a Greenfield telecommunications base station.

Mobile base station

Explore STMicroelectronics' mobile base station solutions, enhancing connectivity and performance for telecom networks.



Complete Guide to 5G Base Station Construction , Key Steps, Equipment

Explore how 5G base stations are built--from site planning and cabinet installation to power systems and cooling solutions. Learn the essential components, technologies, and challenges ...

Base transceiver station

A base transceiver station (BTS) or a baseband unit[1] (BBU) is a piece of equipment that facilitates wireless communication between user equipment (UE) and a network.



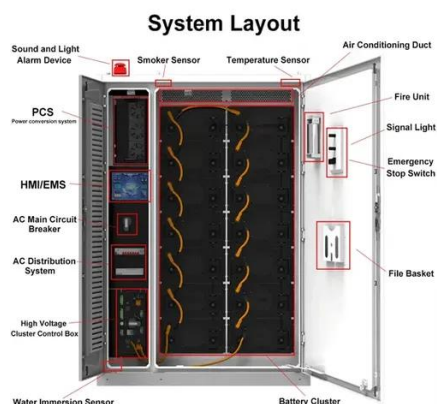
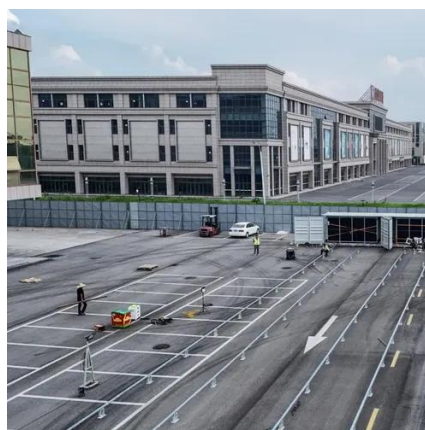
Mobile communication base station , Shanghai Warner Telecom Co., ...

It can be used for base station equipment room, access network equipment room, IP equipment room, etc. The shelter equipped with complete air conditioning system, monitoring system, power system, ...

Quick guide: components for 5G base stations and antennas

Your 5G base-station design and 5G antenna components will need to address not only technical challenges, but also aesthetics, weather and security requirements. This guide is designed

...



Breaking Down Base Stations - A Guide to Cellular Sites

Wondering what telecom sites really look like? Find everything you need to know about telecom sites, towers, and their components.

Planning, Constructing, and



Commissioning a Mobile Network Site

Install coaxial, fiber optic, and power cables to connect antennas, base stations, and other equipment. Ensure proper cable management and secure all cabling to prevent wear and damage. Perform ...



Process of Installing a Base Transceiver Station (BTS)

Installing a Base Transceiver Station (BTS) is a critical step in building mobile communication networks. Here's a step-by-step guide to the process:

CB Radio Base Station Equipment Recommendations and Advice

The basic components for a Base Station CB System include a CB radio, power supply (if you are using a mobile CB radio instead of a base station CB radio), coax, and an antenna. The article is designed ...





Contact Us

For catalog requests, pricing, or partnerships, please visit:

<https://id2market.eu>

Phone: +34 910 56 87 45

Email: info@id2market.eu

Scan the QR code to access our WhatsApp.

