



Niamey smart pv-ess integrated cabinet 10kW installment payment





Niamey smart pv-ess integrated cabinet 10kW installment payment

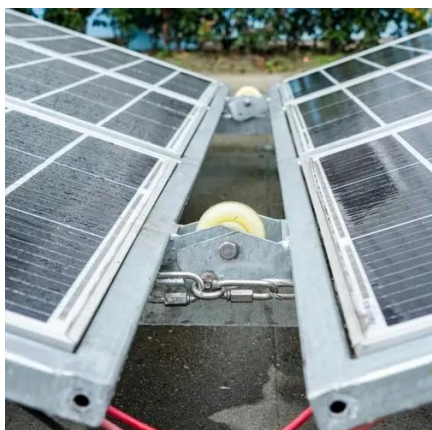


Indoor Photovoltaic Telecom Energy Cabinet

LZY Energy's Indoor Photovoltaic Energy Cabinets are solar-powered integrated equipment especially designed to meet the requirements of communication base station rooms.

All-in-one Cabinet consists of power battery cluster

All-in-one design and modular installation, single cabinet covering an area of just 1.21m²; Applicable to multiple industrial scenarios and easy to connect to ...



Niamey Energy Storage Outdoor Cabinet with Ultra-High Efficiency

Outdoor Cabinet Energy Storage System (ESS) for PV Storage Standardized Structure Design: Includes energy storage batteries, power conversion systems (PCS), photovoltaic modules, and charging ...

SMART INVESTMENT

These cabinets are ideal for outdoor base stations in remote, mountainous, or desert regions, especially where grid power is absent, unstable, or costly. They are also used for border ...



Max-Solaris Intelli-PV ESS Cabinet

Simple & user-friendly: Compact design for easy installation; Remote monitoring for effortless operation.



ESS-GRID Cabinet Brochure EN-250401

Multiple cabinets can be connected in parallel to realize the expansion of the energy storage system. The local control screen enables diverse functions, including system operation monitoring, energy ...



100kWh Smart PV Ess Cabinet

Integrated PV and storage system with super wide PV input voltage; Small footprint and IP54 protecting grade for outdoor installation. Safe & Reliable High-performance battery cell, meet IEC/UL/GB ...



Integrated All-in-One Ess for Green



Building Renewable Energy

SMART PV-ESS ALL-IN-ONE UNIT All-in-one systems integrate batteries, PCS, and EMS into a compact 1.3m² footprint. Equipped with intelligent liquid cooling, they support grid-tied operation for ...



Smart ESS All-In-One Cabinet

Smart ESS All-In-One Cabinet CA-PRO-215KWH/430KWH A-grade LiFePO4 Cells from Top 5 Brands Cycle Life: ≥ 6000 Times @ 80% DoD Highly Integrated All-in-one Design, Making



Contact Us

For catalog requests, pricing, or partnerships, please visit:

<https://id2market.eu>

Phone: +34 910 56 87 45

Email: info@id2market.eu

Scan the QR code to access our WhatsApp.

