



Northwest transmission node cabinet depth 1000mm





Northwest transmission node cabinet depth 1000mm



Network Cabinet B , W800 D1000 42U , Side Panels, Airflow, CT , FD ...

This network cabinet in the color black has the following dimensions: 800mm wide, 1000mm depth, 42U height. It includes a single perforated front door and perforated double door at the rear provided with ...

[27U RACK cabinet, floor standing, fully assembled 600x1000](#)

RACK 19" cabinets Pulsar - series ZRS series floor standing - fully assembled Depth 1000mm. RACK 19" cabinet enables integrating CCTV, AC, I& HAS, RTV, LAN, or other systems in medium and big ...



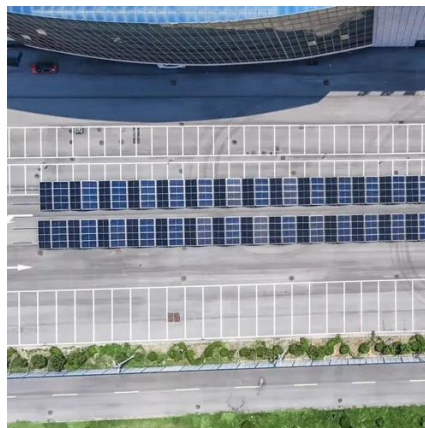
Networking & Switch Cabinets

Belden's XHS Series of Networking and Switch Cabinets is designed to support high load capacities and proper airflow management. The cabinets offer a modular and scalable system that adapts to ...



Server Racks & Cabinets

Our range of Server Racks have been designed specifically to house all industry standard servers with an overall external depth of 1000mm. Increased airflow allows all equipment inside to remain cool.



[1000mm depth rack-mount server cabinet](#) [Newegg](#)

Search Newegg for 1000mm depth rack-mount server cabinet. Get fast shipping and top-rated customer service.

[15U SERVER RACK CABINET, 1000MM DEPTH - ...](#)

This Cabinet is built with high-quality aluminum/steel structures. With vented doors and cooling fans, it provides excellent air circulation for servers and other devices.



NavePoint 42U Server Rack Cabinet, 1000mm depth, Fan Compatible ...

Quick-release, locking side panels give easy access; extra depth simplifies cable management and PDU installation behind equipment. Customize to the needs of your large, complex jobs with all EIA/ECA ...



[42U 1000mm Depth Rack-mount Server](#)



Cabinet

WN Series Cabinet is built with high-quality aluminum/steel structures. With vented doors and cooling fans, WN series provides excellent air circulation for servers and other devices.

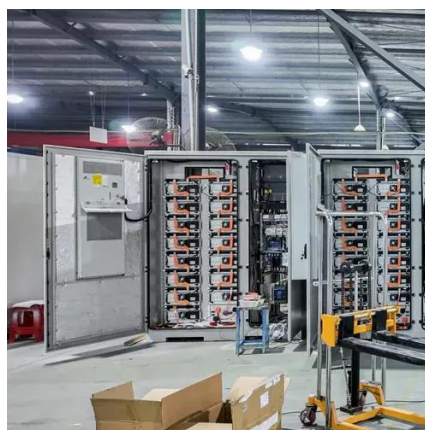


How Deep Should My Server Rack Cabinet Be? A Complete Guide

To determine the ideal depth for your server cabinet, begin by measuring the total depth of your deepest piece of equipment. You'll want to include rear cable clearance and airflow zones in ...

Net-Verse Cabinets

Net-Verse™ Cabinets shall consist of a welded and assembled steel frame construction available in 600mm (23.6") and 800mm (31.5") widths, 1000mm (39.4") and 1200mm (47.3") depths, ...





Contact Us

For catalog requests, pricing, or partnerships, please visit:

<https://id2market.eu>

Phone: +34 910 56 87 45

Email: info@id2market.eu

Scan the QR code to access our WhatsApp.

