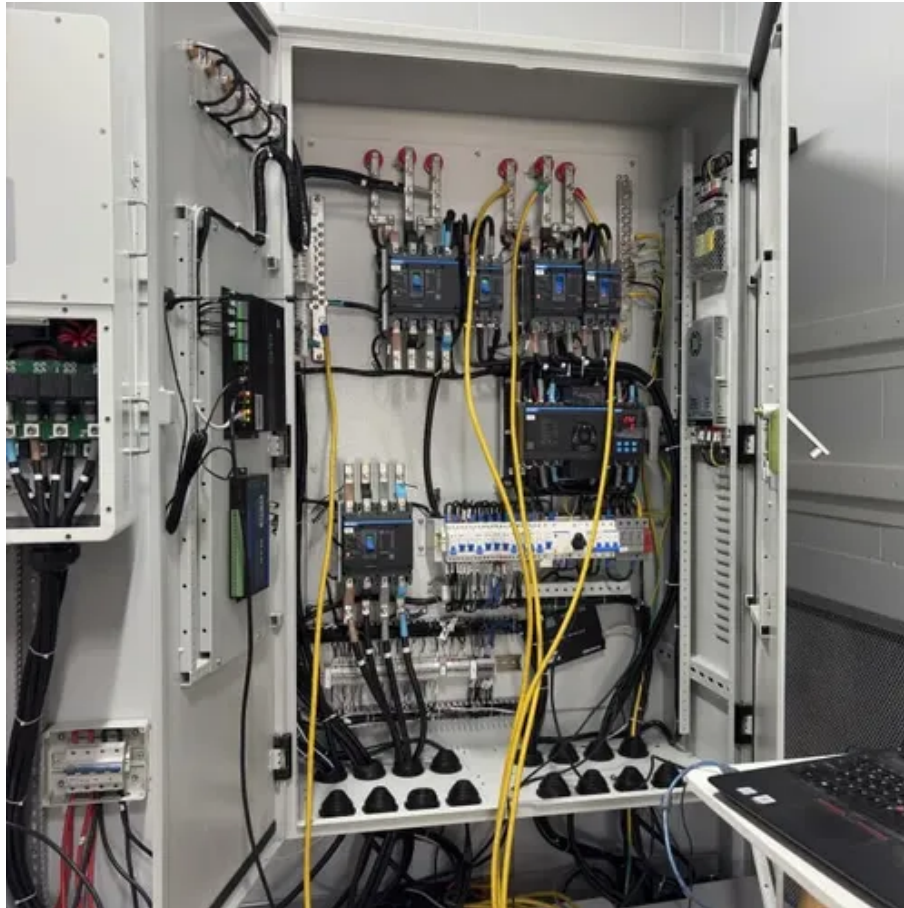




Number of solar panels connected to the inverter





Overview

The answer depends on the size of your inverter and the wattage of your panels. Connecting solar panels to an inverter is a crucial step in any solar power system. Connecting the right number of. If you're building or upgrading your solar system, it's important to know how many panels you can safely connect to your inverter.



Number of solar panels connected to the inverter



[How Many Solar Panels Can Go On One Inverter?](#)

For a 2000-watt inverter, the number of solar panels depends on panel wattage, but a general guideline is around 6 to 8 panels for a balanced system. To calculate the number of solar ...

[How Many Inverters Do You Need for Your Solar System?](#)

In this article we'll dive deep into the world of inverter sizing, explore how many panels you can connect to one inverter, why the design matters, and how the choice of a solar inverter ...



How do I know how many solar panels I can connect to my inverter?

If you're building or upgrading your solar system, it's important to know how many panels you can safely connect to your inverter. Your inverter's MPPT (Maximum Power Point Tracking) input ...

[How Many Solar Panels Can I Connect to an Inverter?](#)

How many solar panels can you connect to an inverter without overload? Get the right balance for maximum efficiency and power in your solar setup--here's what to know!



How Many Panels Can I Put on My Inverter?

If you're wondering how many solar panels you can put on your inverter, the answer is: it depends. The capacity of an inverter is measured in kilowatts (kW), and most household inverters ...



How many panels can I connect to one inverter?

In practice, it is common to install solar panels with a total power that 10% to 30% higher than the power of the inverter. This is called oversizing and is allowed because inverters rarely run at peak power ...



How Many Solar Panels Can I Connect to My Inverter?

Adding solar panels is an obvious solution, but how many of these PV modules can your inverter handle? A solar array can be up to 130% of the inverter capacity. So if you have a 4000 watt inverter ...



How Many Solar Panels Can I Connect



to an Inverter? A Complete ...

This guide will discuss the factors that determine how many solar panels can be connected to an inverter, such as inverter specifications, wiring configurations, and the use of charge controllers.

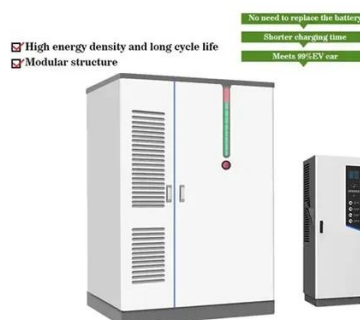


[Complete Solar Inverter Sizing Guide](#)

Solar inverter sizing made simple with clear steps for calculating load demand and matching inverter capacity to solar panels.

[How many solar panels can an inverter handle](#)

To effectively determine the number of solar panels an inverter can handle, you must first assess the size of your solar panel array. The overall capacity of your solar installation is defined by ...





Contact Us

For catalog requests, pricing, or partnerships, please visit:

<https://id2market.eu>

Phone: +34 910 56 87 45

Email: info@id2market.eu

Scan the QR code to access our WhatsApp.

