



Operating Guide for 30kWh Communication Power Supply Cabinet





Overview

NOTE This equipment has been tested and found to comply with the limits for a Class A digital device, pursuant to part 15 of the FCC Rules. These limits are designed to provide reasonable protection again.



Operating Guide for 30kWh Communication Power Supply Cabinet



Vertiv(TM) Liebert® EXS for a 30kVA, 208/220VAC Three-Phase, ...

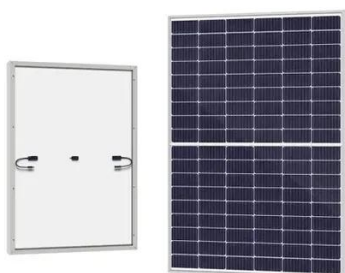
Warning booklet and a quick-start guide for ease of installation and UPS startup. The user manual shall include installation instructions, a functional description of the equipment with block diagrams, safety ...

MEAN WELL system power supply can be matched with MEAN WELL's self-made monitor CMU2C to achieve control and monitoring functions Please refer to the CMU2C datasheet and user manual for ...



User Manual

TESCOM DS300HB Series Uninterruptible Power Supplies are double-conversion; three level on-line UPS's manufactured with the latest IGBT and PWM technology, to produce an uninterruptible, fully ...



[User Manuals: Emerson Liebert NX 30 kVA Power Supply](#)

View online or download Emerson Liebert NX 30 kVA Power Supply User Manual.



For 30KW Power Module

The cabinets must be installed on a level floor suitable for computer or electronic equipment. UPS cabinet is heavy. If unloading instructions are not closely followed, cabinet may Do not tilt the ...



AND USER MANUAL

This mode uses the "GEN" input as a load output that delivers power when the battery exceeds a user programmable threshold or when the Sol-Ark is connected to the grid.



[Eaton 9355 Tie Cabinet \(20/30 kVA\) Installation Guide](#)

This manual contains important instructions that you should follow during installation and maintenance of the UPS and batteries. Please read all instructions before operating the equipment and save this ...



20/30 kVA User Guide



To ensure you have the most up-to-date content and information for this product, please review the latest manual revision on our website,



164201626_9355_30_UPS_RevC-Rel

Working with a building's electrical system, the UPS supplies clean, consistent power that sensitive electronic equipment requires for reliable operation. During brownouts, blackouts, and other power ...

[30 kVA--160kVA Uninterruptible Power Supply](#)

This manual contains important instructions for your Uninterruptible Power Supply (UPS) system. You should follow these instructions during the installation and maintenance of the UPS, options, ...





Contact Us

For catalog requests, pricing, or partnerships, please visit:

<https://id2market.eu>

Phone: +34 910 56 87 45

Email: info@id2market.eu

Scan the QR code to access our WhatsApp.

