



# Overview of the wind turbine blade factory





## Overview

---

This article provides a detailed overview of the development of rotor blades, from the foundation of scientific research on alternative materials, through mechanics, to quality control. It discusses the “behind the scenes” in the production of wind turbine rotor blades. Let's explore exactly how these massive. Inside the Wind Turbine Blade Factory: Building 100-Meter Giants for Green Energy (Full Process) In this factory production documentary, we take you inside a massive wind turbine blade manufacturing plant to reveal the full process behind one of the most important components of renewable energy. While the blades of a turbine may be one of the most recognizable features of any wind installation, they also represent one of the largest physical challenges in the manufacturing process. The manufacturing of these blades is a complex process that combines advanced materials, precision engineering, and strict quality control to ensure performance. An exceptional example of engineering is the blades of a wind turbine, which, in conjunction with the facility, effectively harness wind power to produce clean energy.



## Overview of the wind turbine blade factory

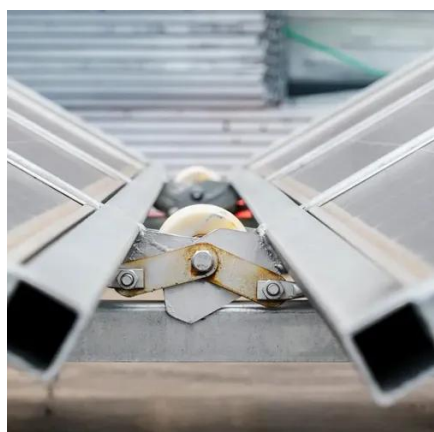


### How Are Wind Turbine Blades Manufactured? Step-by-Step Guide

Discover how wind turbine blades are manufactured, from design and materials to molding, curing, and finishing. Learn about the full process here.

### [How Wind Turbine blades are Manufactured?](#)

Wind turbine blades are remarkable feats of engineering, transforming the power of the wind into clean electricity. The materials they are made from and the methods used to construct ...



### [Wind Turbine Rotor Blade Manufacturing: Manufacturing Process](#)

The wind turbine manufacturing process involves several stages, including the design of wind turbine components, the selection of materials, and the assembly of various parts like the rotor, ...

### Advanced Blade Manufacturing

Because of their size and aerodynamic complexity, wind turbine blades are skillfully manufactured by hand to ensure the highest level of craftsmanship and to outfit wind turbines with the most reliable

...



**TAX FREE**    

**Product Model**  
HJ-ESS-215A(100KW/215KWh)  
HJ-ESS-115A(50KW 115KWh)

**Dimensions**  
1600\*1280\*2200mm  
1600\*1200\*2000mm

**Rated Battery Capacity**  
215KWH/115KWH

**Battery Cooling Method**  
Air Cooled/Liquid Cooled




## Blade Manufacturing

Blade manufacturing is the process of designing, fabricating, and assembling the blades used in wind turbines. These blades are crucial components of the turbine system as they capture ...

## (PDF) Manufacturing processes, life cycle analysis, and future

Wind turbines obtain clean energy from the wind, however, there is a significant environmental impact due to the use of some of their materials. This article analyzes the ...

**TAX FREE**    

**ENERGY STORAGE SYSTEM**

**Product Model**  
HJ-ESS-215A(100KW/215KWh)  
HJ-ESS-115A(50KW 115KWh)

**Dimensions**  
1600\*1280\*2200mm  
1600\*1200\*2000mm

**Rated Battery Capacity**  
215KWH/115KWH

**Battery Cooling Method**  
Air Cooled/Liquid Cooled




## Inside the Wind Turbine Blade Factory: Building 100-Meter Giants for

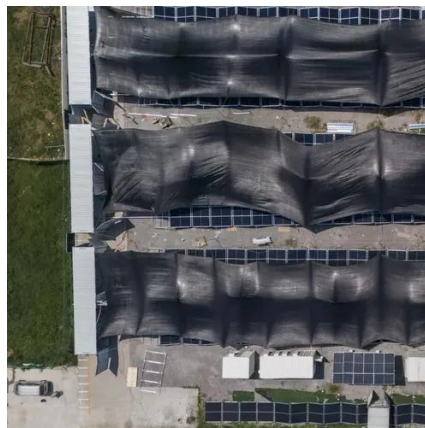
In this factory production documentary, we take you inside a massive wind turbine blade manufacturing plant to reveal the full process behind one of the most important components of

## The Manufacturing Process of



## Turbine Blades: Powering the Future of

The manufacturing of these blades is a complex process that combines advanced materials, precision engineering, and strict quality control to ensure performance and durability in ...



### [The manufacturing evolution of wind-turbine blades](#)

NREL's new CoMET facility in Boulder, Colorado innovates wind-turbine blade manufacturing by letting researchers design, prototype, and test composite blades and other components in one place.

### [How Are Wind Turbine Blades Manufactured Step by Step?](#)

The manufacturing of wind turbine blades is a complex process that requires precision, expertise, and attention to detail. From design to installation, each step is crucial in creating blades ...





## Contact Us

---

For catalog requests, pricing, or partnerships, please visit:

<https://id2market.eu>

Phone: +34 910 56 87 45

Email: [info@id2market.eu](mailto:info@id2market.eu)

Scan the QR code to access our WhatsApp.

