



PV panel combiner box voltage





PV panel combiner box voltage



What is a Combiner Box as Used in PV System: A Complete Guide

If you're wondering what is a combiner box as used in PV system, it's a device that connects multiple solar panel strings into a single output for your solar setup. The combiner box ...

A Comprehensive Guide to Combiner Boxes in Photovoltaic Systems

The working principle of combiner boxes is simple - they combine the DC output of multiple solar panels into a manageable circuit. This combined output is then fed to an inverter, which converts the DC ...



What Is a Combiner Box in a Solar Panel System? Complete Guide

Multiple PV strings enter on separate positive and negative inputs. The box merges them to one or two main outputs. This reduces cable runs to the inverter and keeps the roof clean. I also size the ...

Understanding PV Combiner Boxes: Design, Function, Protection, and

A complete guide to PV combiner boxes, covering structure, safety protection, monitoring, IP ratings, selection principles, and future smart trends. Learn how advanced combiner ...



System Topology

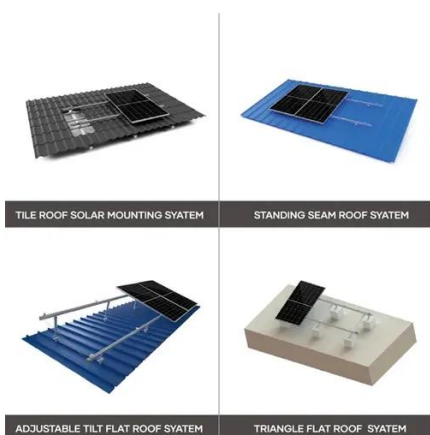


Combiner Box Selection Guide: How to Choose the Right PV DC Box

To choose the right one, you must match the system voltage (1000V or 1500V), calculate the correct fuse size ($I_{sc} \times 1.56$), and ensure an IP65 or higher weather rating. You now have a basic idea of ...

Electrical Parameters to Consider When Designing a Combiner Box

Therefore, when designing a combiner box, it is necessary to understand the voltage of each PV string and ensure the rated voltage of the combiner box is equal to or greater than the system's operating ...



What is the output voltage of a PV AC combiner box?

In most regions, the grid voltage has a standard range. For instance, in Europe, the standard grid voltage is 230V ($\pm 10\%$), and in the United States, it is 120/240V. The output voltage of the PV AC ...

How to Calculate PV Combiner Box



Specifications?

? Always choose combiner boxes with voltage rating equal to or higher than your string's Voc \times 1.25 safety factor. $\rightarrow 49.95V \times 20 \times 1.25 = 1248.75V$, but 1000V is your inverter limit, so use 1000V-rated ...



The Ultimate Guide to Solar Combiner Boxes: From Basics to ...

Choose a combiner box with a voltage rating that matches or exceeds the maximum voltage of your solar power system. This is critical for ensuring safe operation and preventing ...

Solar Combiner Boxes and Voltage Changes: What to Know

You should always pick a solar combiner box with a voltage rating higher than your system's highest voltage. This keeps your system safe and helps it last longer.





Contact Us

For catalog requests, pricing, or partnerships, please visit:

<https://id2market.eu>

Phone: +34 910 56 87 45

Email: info@id2market.eu

Scan the QR code to access our WhatsApp.

