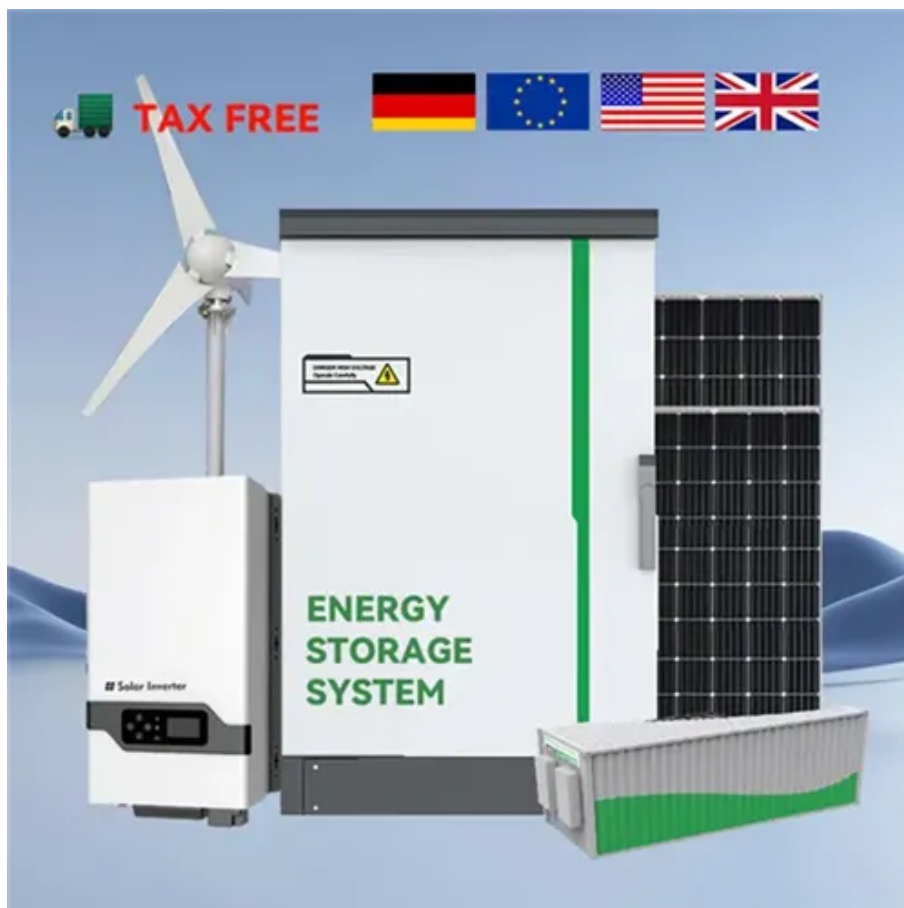




Photovoltaic base support process requirements





Overview

The RERH specifications and checklists take a builder and a project design team through the steps of assessing a home's solar resource potential and defining the minimum structural and system components needed to support a solar energy system. This report is available at no cost from the National Renewable Energy Laboratory (NREL) at www.nrel.gov. National Renewable Energy Laboratory, Sandia National Laboratory, SunSpec Alliance, and the SunShot National Laboratory Multiyear Partnership (SuNLaMP) PV O&M Best Practices. The Renewable Energy Ready Home (RERH) specifications were developed by the U. Environmental Protection Agency (EPA) to assist builders in designing and constructing homes equipped with a set of features that make the installation of solar energy systems after the completion of the home's. In constructing photovoltaic power stations, the design, material selection, and installation methods of the support system play a crucial role. In solar projects, the base support system is like the foundation of a skyscraper - get it wrong, and your entire PV array might end up doing the wave during the next stor Ever tried assembling IKEA. omplete photovoltaic (PV) system. In order for the generated electricity to be useful in a home or business,a number of ot silicon solar cell (as of 2005). Electrical contacts made from busbars (the larger silver-colored strips) and fingers (the smaller ones) are dules are growing extremely fast.



Photovoltaic base support process requirements



The importance of the installation method of the base and the

In the installation process of photovoltaic support, the important thing is the installation and fixation of its base, which will directly affect the stability of the equipment during use.

A Guide to Photovoltaic Systems Installation: From Setup to ...

Follow along with the essential steps of photovoltaic systems installation, from mounting solar modules and connecting to the grid, to commissioning and regular maintenance for optimal performance.



Best Practices for Operation and Maintenance of Photovoltaic ...

The goal of this guide is to reduce the cost and improve the effectiveness of operations and maintenance (O& M) for photovoltaic (PV) systems and combined PV and energy storage systems.

Photovoltaic Power Plant Array Foundation and Support Structure ...

Optimizing the structural design of the support and foundation not only satisfies the installation and operational requirements of the modules but also significantly reduces the investment in supports ...



Photovoltaic base support process

The installation selection of photovoltaic ground brackets is mainly based on factors such as the fixing method of the bracket, terrain requirements, material selection, and the weather

[Solar Photovoltaic: SPECIFICATION, CHECKLIST AND GUIDE](#)

About the Renewable Energy Ready Home Specifications Assumptions of the RERH Solar Photovoltaic Specification Builder and Specification Limitations

- 1.5 Document the solar resource potential at the designated array location
- 3.3 Install a conduit for the AC wire run from the designated inverter location to the electric service panel
- 4.2 Record the name and Web address of the electric utility service provider

5.1 Landscape Plan

5.2 Placement of non-array roof penetrations and structural building elements

Appendix A: RERH Labeling Guidance

The Renewable Energy Ready Home (RERH) specifications were developed by the U.S. Environmental Protection Agency (EPA) to assist builders in designing and constructing homes equipped with a set of features that make the installation of solar energy systems after the completion of the home's construction easier and less expensive. See more on

Missing: base support
Must include: base support
leonsolar



Design and Implementation of



PV Mount Systems

This system serves as the structure that supports photovoltaic modules and directly impacts the stability, safety, and power generation efficiency of the photovoltaic ...



[Solar Photovoltaic: SPECIFICATION, CHECKLIST AND GUIDE](#)

Provide to the homeowner a copy of this checklist and all the support documents listed below (to be provided to future solar designer).

[Life Cycle of Photovoltaic Systems: Install and Commission a](#)

This page contains considerations for structural and site-related design, electrical equipment, PV modules, and fasteners, considerations unique to the PV system type (rooftop, ground-mounted, ...



Photovoltaic Base Support Process Flow Chart: A Step-by-Step Guide ...

This is where our process flow chart turns into a choreographed dance. We've perfected the "solar slide" - moving panels into position without dropping tools or lunch breaks.

[Design and Implementation of PV Mount Systems](#)

This system serves as the structure that supports photovoltaic modules and directly impacts the



stability, safety, and power generation efficiency of the photovoltaic power station.



Ground Mounted PV Solar Panel Reinforced Concrete Foundation

For illustration and purposes, the following figures provide a sample of the input modules and results obtained from an spMats model created for the ground mounted PV solar panel reinforced concrete ...



Contact Us

For catalog requests, pricing, or partnerships, please visit:

<https://id2market.eu>

Phone: +34 910 56 87 45

Email: info@id2market.eu

Scan the QR code to access our WhatsApp.

