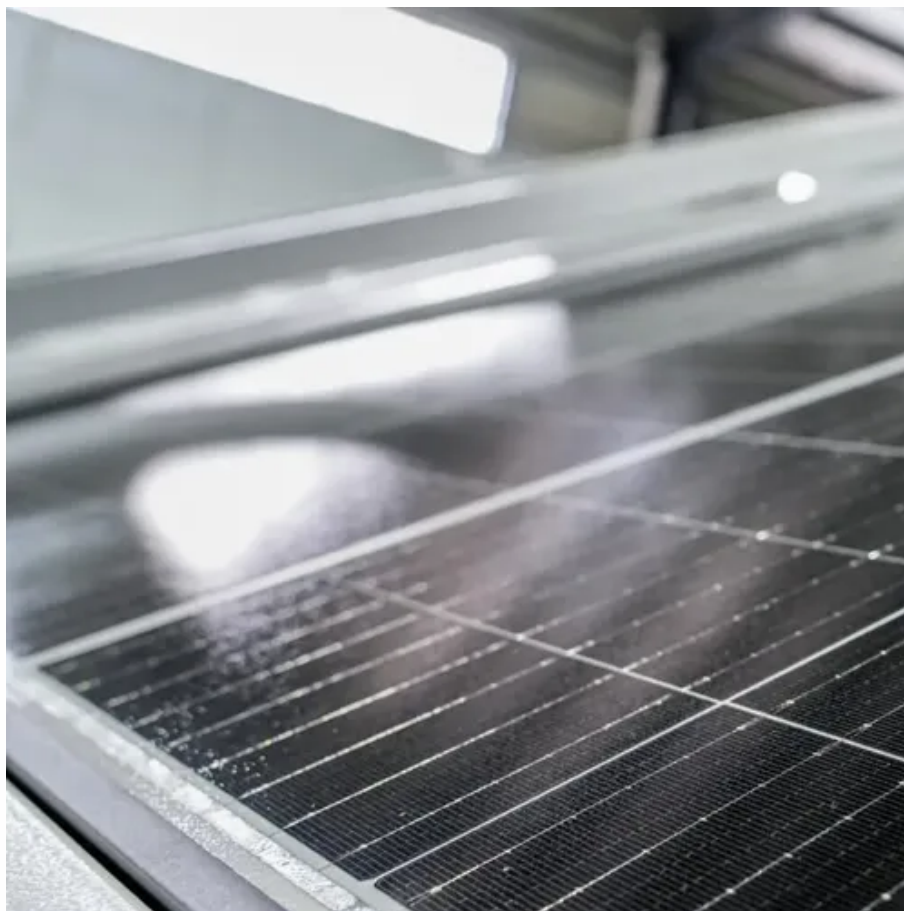




Photovoltaic combiner box installation location





Overview

The combiner box is usually installed close to the solar panel array. Shorter cable runs reduce power loss and make wiring easier. Choose a spot with good airflow and natural shading to help control heat buildup. Avoid locations with extreme heat, standing water, or high moisture. Some combiner boxes also come with built-in fans to improve. Install a solar combiner box by choosing the right location, mounting it securely, wiring solar strings and outputs correctly, ensuring safety, and testing before powering up. Installing a solar combiner box correctly is not just about making the system work—it's about making sure it works safely. A solar combiner box is a crucial component in solar energy systems, designed to consolidate the outputs of multiple solar panel strings into a single output that connects to an inverter. Without it, wiring becomes tangled, voltage drops occur, maintenance costs rise, and safety risks increase.



Photovoltaic combiner box installation location



[How are PV Combiner Boxes Installed? , Power Home](#)

Check the Location: Choose a dry, well-ventilated place and make sure the mounting wall or pillar is strong enough to withstand its weight. You also need to reserve space for future inspection ...

The Ultimate Guide to Solar Combiner Boxes: From Basics to ...

Explore the comprehensive guide to PV Solar Combiner Boxes: Learn about types, components, selection criteria, installation best practices, maintenance, and advanced technologies.



Where should a combiner box be installed in a solar installation?

Ideally, the combiner box should be installed as close as possible to the solar panel array. This minimizes the length of the DC cables, which in turn reduces power losses. DC cables ...

[Installation position and precautions of solar combiner box](#)

The installation location of solar combiner box should be close to your PV modules to minimize cable length. Make sure the installation location of solar combiner box is protected from rain, dust, and ...



What are the Key Steps and Precautions When Installing PV Combiner Boxes?

Installation should proceed only after the product has been rectified and approved. Determine the optimal position of the combiner box through a comprehensive on-site assessment. ...

[SolarEdge Combiner Box Installation and Connection](#)

Before installing and connecting the combiner box to the inverter and other equipment, read carefully all handling and safety instructions in the installation guides that come with the inverter and the equipment.



[Solar Combiner Box Installation and Wiring Diagram](#)

Learn how to safely install and wire a solar combiner box for DC PV systems. Step-by-step guide covers wiring, grounding, surge protection (SPD), and best practices for solar panel arrays.

[How to install a PV AC combiner box?](#)



Installing a PV AC combiner box is a crucial step in any photovoltaic (PV) system setup. As a reliable PV AC combiner box supplier, I'm here to guide you through the installation process. This blog will ...



Placement Considerations for Solar Combiner Boxes in Photovoltaic

Installing the combiner box in a sheltered or weatherproof location, such as indoors, within a weatherproof enclosure, or under a protective canopy, helps prolong its lifespan and ensures ...

[How to Install a Solar Combiner Box - Step by Step](#)

Install a solar combiner box by choosing the right location, mounting it securely, wiring solar strings and outputs correctly, ensuring safety, and testing before powering up.





Contact Us

For catalog requests, pricing, or partnerships, please visit:

<https://id2market.eu>

Phone: +34 910 56 87 45

Email: info@id2market.eu

Scan the QR code to access our WhatsApp.

