



Photovoltaic fixed adjustable bracket construction drawing





Photovoltaic fixed adjustable bracket construction drawing

[Photovoltaic adjustable bracket structure design drawing](#)



In order to achieve the effective use of resources and the maximum conversion rate of photovoltaic energy, this project designs a fixed adjustable photovoltaic bracket structure

[New process design drawing of photovoltaic bracket](#)

In order to achieve the effective use of resources and the maximum conversion rate of photovoltaic energy, this project designs a fixed adjustable photovoltaic bracket



Structural Design and Simulation Analysis of New Photovoltaic ...

Save construction materials, reduce construction cost, provide a basis for the reasonable design of PV power plant bracket, and also provide a reference for the structural design of fixed ...

[Structural drawings of photovoltaic luxury brackets](#)

In order to respond to the national goal of "carbon neutralization" and make more rational and effective use of photovoltaic resources, combined with the actual photovoltaic substation project, a fixed ...



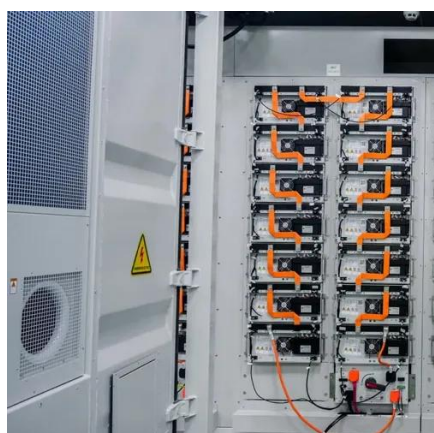
[Rooftop photovoltaic bracket design drawings](#)

Planning and Designing for Rooftop PV: Designers should calculate wind loadson the PV array,specify assemblies and their associated attachments that have sufficient strength to resist the ...



[Photovoltaic bracket product drawings](#)

A photovoltaic bracket is a bracket, such as a solar photovoltaic bracket, which is a special bracket designed for placing, installing and fixing solar panels in a solar photovoltaic power



[Photovoltaic bracket selection design drawings](#)

In the photovoltaic (PV) solar power plant projects, PV solar panel (SP) support structure is one of the main elements and limited numerical studies exist on PVSP ground

[Photovoltaic fixed bracket construction](#)



process

Saving construction materials and reducing construction costs provide a basis for the reasonable design of photovoltaic power station supports, and also provide a reference for



Photovoltaic fixed bracket drawings

In order to achieve the effective use of resources and the maximum conversion rate of photovoltaic energy, this project designs a fixed adjustable photovoltaic bracket



51.2V 150AH, 7.68KWH



Contact Us

For catalog requests, pricing, or partnerships, please visit:

<https://id2market.eu>

Phone: +34 910 56 87 45

Email: info@id2market.eu

Scan the QR code to access our WhatsApp.

