



Photovoltaic grid inverter APP does not display power





Overview

If your inverter appears offline in your monitoring app but continues to produce power, there's likely no issue with the inverter itself. This situation usually points to a communication issue, not a power failure. Your system may still be supplying electricity to your. The data is usually updated every 15 minutes. Until this is resolved, we cannot share your solar panel production and efficiency with you or alert you if there are any issues. Update the SMA 360°. We frequently receive inquiries regarding why customers are unable to see the power flows from their inverter displayed on the device screen, particularly when the inverter is a Hybrid or DC-Coupled system.



Photovoltaic grid inverter APP does not display power



[DC/Hybrid PV not showing on device display but does on app?](#)

We frequently receive inquiries regarding why customers are unable to see the power flows from their inverter displayed on the device screen, particularly when the inverter is a Hybrid or DC-Coupled ...

[Troubleshooting Your System , Tesla Support](#)

If your solar inverter screen shows that the system is producing energy, but production data is not updating or visible on the Tesla app, we cannot share your solar panel production and efficiency with ...



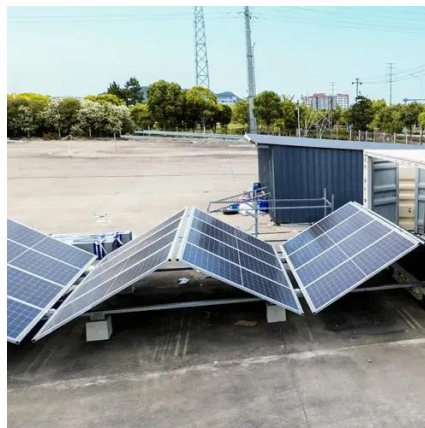
[Why the app didn't show the power imported from the grid?](#)

Why can't I see the power I draw from the grid on the app? As shown in the picture below, the power consumed is an exact mirror of the power solar generated. It just can't be right.



[App Does Not Display Production Data](#)

Check the LED indicators on your inverter, as follows: Check the blue LED: when it is on, the system is communicating (sending data to mySolarEdge and the monitoring platform)



Photovoltaic grid inverter APP does not display power

Check the green LED: when is on, system is producing power; Check the blue LED on: when is on, system is communicating (sending data to mySolarEdge and the monitoring platform) For



Why is my inverter offline on the monitoring app, but it's still

If your inverter appears offline in your monitoring app but continues to produce power, there's likely no issue with the inverter itself. This situation usually points to a communication issue, ...



Deye 5kw inverter no grid power and load power units showing

When grid is switched ON, the Inverter display shows Zero value Kilowatts for PV, grid, and Loads. Why is this happening yet it's sunny outside and batteries are full ? What if the battery is ...



SUNSYNK Owners Group , The



SunSynk app isn't showing my home

...

We are having a bit of an issue with our sunsynk app and wondered if anyone could help. According to the app the amount of power we import from the grid is quite different to what our ...



PV not showing on inverter display

It's possible (though unlikely) that 40 V is too high. But if that was the case, I'd expect the PV icon to be flashing, not absent altogether. You might need to get the solar charger repaired, or ...

No Data Display or Energy and Power Information Display is not ...

In addition switching to another tab can cause the "freeze" of the app. However, the data is still displayed in Sunny Portal powered by ennexOS and via the user interface of the inverter.





Contact Us

For catalog requests, pricing, or partnerships, please visit:

<https://id2market.eu>

Phone: +34 910 56 87 45

Email: info@id2market.eu

Scan the QR code to access our WhatsApp.

