



Photovoltaic panel arrangement method on color steel tile roof



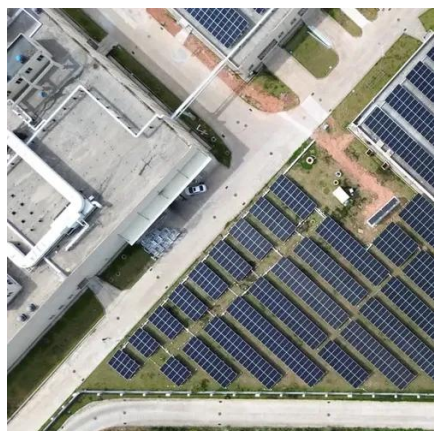


Overview

This practical guide explains photovoltaic panel installation on color steel tile roofs, covering technical considerations, cost benefits, and real-world success stories. Discover why this roofing material offers unique advantages for solar integration. Understand the roof's structure, 2. Ensure proper installation techniques, 4. See how SunPower can protect your roof's integrity while providing the world's best solar. A solid understanding of the various types of. Glazed tile roof: Glazed tile roof is suitable for small and medium-sized distributed PV power stations, usually using hook mounting, fixed on the roof structure (such as concrete beams or wooden beams) through stainless steel hooks, and with rails and pressure blocks to fix the PV modules.



Photovoltaic panel arrangement method on color steel tile roof



Photovoltaic panel arrangement method on color steel tile roof

With a full range of roof hooks and brackets, PV-ezRack SolarRoof(TM) is suitable for most roofing types, including pitched tile roofs, metal roofs, concrete roofs and even slate roofs.

Glazed tile and color steel tile photovoltaic bracket installation

The PV modules of color steel tile roof are usually installed flat, and the spacing between the modules is 1.5 times the height of the modules. Due to the variety of tile types on color steel tile roofs, ...



How to Install Solar Panels on Color Steel Tile Roofs: A Complete Guide

This practical guide explains photovoltaic panel installation on color steel tile roofs, covering technical considerations, cost benefits, and real-world success stories.

[installing solar panels on tile roof guide](#)

Learn how to safely install a solar panel on tile roof without breaking tiles. Comprehensive guide with step-by-step instructions. Start saving energy now!



Installation of photovoltaic panels on the color steel tile roof

A preferred technique utilized to install SunPower's highly efficient solar panels on a lightweight tile roof is called an inset solar installation, sometimes referred to as a "comp



The Ultimate Guide to Color Steel Tile Roof Photovoltaic Bracket

Installing photovoltaic brackets on color steel tile roofs is a straightforward but crucial part of any solar energy system. By following the proper steps, adhering to best practices, and avoiding common ...



How to Install Flexible Solar Panels on Color Steel Tile Roof?

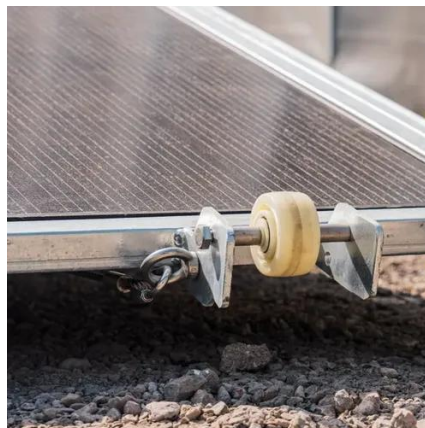
Color steel tile roofs, commonly used in industrial and commercial buildings, are lightweight and corrosion-resistant but require precise load assessment before installing flexible solar panels.

[How to install solar energy on color steel](#)



[tile roof](#)

Installation of solar energy systems on color steel tile roofing requires careful consideration of multiple factors, including roof assessment, necessary materials, and the right installation technique.



How to put solar energy on the color steel tile roof , NenPower

To integrate solar energy onto a color steel tile roof, one must follow a series of key steps and considerations. 1. Understand the roof's structure, 2. Choose ...

[The Ultimate Guide to Mounting Solar Panels on a Tile Roof](#)

We will cover everything from initial roof assessment to selecting the right components and ensuring a perfect installation, so you can complete your projects on time, within budget, and to the highest ...





Contact Us

For catalog requests, pricing, or partnerships, please visit:

<https://id2market.eu>

Phone: +34 910 56 87 45

Email: info@id2market.eu

Scan the QR code to access our WhatsApp.

