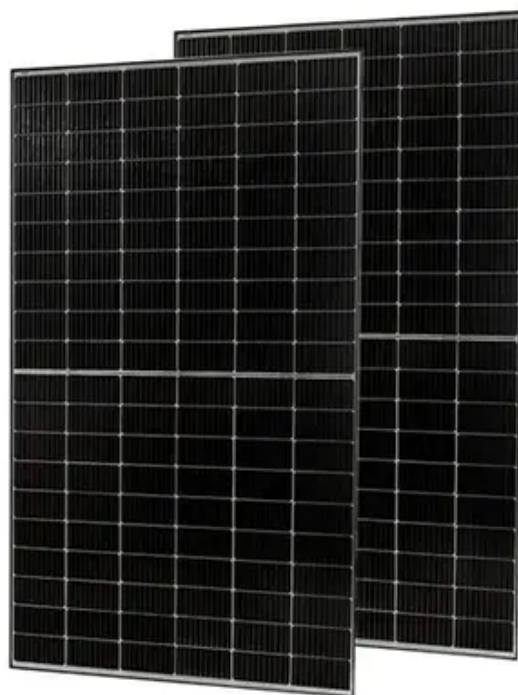




Photovoltaic panel collection line construction





Overview

Messenger wire for fiber is not bonded at all 3 poles (possible induced voltage). Switch is grounded with separate ground. Pole ground and switch ground should be commonly bonded. Where do we go from here?

is constructing facilities and system upgrades approaching \$400,000 per project, averaging six months to complete. A looming issue?

Lockwashers?

Terminator installed incorrectly. This includes determining the layout of the power collection system, line length. Design Development stage: The Architectural/Engineering Design Professional (A/E) is responsible for providing a DD level Roof Plan, showing available roof area (or other available space on select projects), to be used by solar firms in determining solar production targets. Leveraging Wesco's experts early in your project planning allows you to fully utilize our services and solutions. The right partner is crucial to the safe and. The Renewable Energy Ready Home (RERH) specifications were developed by the U. Environmental Protection Agency (EPA) to assist builders in designing and constructing homes equipped with a set of features that make the installation of solar energy systems after the completion of the home's. The solar module manufacturing process is performed at an industrial level by special machines which assemble the various parts semi-automatically.



Photovoltaic panel collection line construction

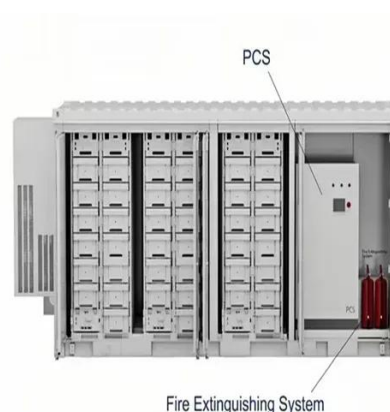


[String Collection , Products and Technologies , Wesco](#)

Wesco's engineering team reviews design details and specifications to determine the types and quantities of harnesses, photovoltaic (PV) assemblies, and combiners to create detailed product ...

[TURNKEY SOLAR PANEL / PV MODULE PRODUCTION LINE](#)

What we offer to our customers is a high capacity automatic solution for the assembly of photovoltaic modules. Partnering with CETC Solar Energy, and leveraging our experience, enables a quick and ...



[PV Collector Substation & T-Line EPC](#)

Offloading/construction of control buildings. NETA testing.



Solar PV Guidline

The PV-100 is to include a one-line electrical diagram for the PV system and its interface to the local electrical utility, as well as the Sheet Notes referenced by this Guideline.



Solar Project Development Process-Power Collection System

This includes determining the layout of the power collection system, line length, transmission capacity, and cable selection. The design should also consider factors such as the safe ...



Solar Farms: design & construction

Where do we go from here? is constructing facilities and system upgrades approaching \$400,000 per project, averaging six months to complete. A looming issue? Lockwashers? Terminator installed ...



Solar Photovoltaic: SPECIFICATION, CHECKLIST AND GUIDE

Although system arrays (panels or collectors) can be racked up to meet the inclination/tilt needed for optimal system output, this specification is based on and limited to the known building attributes (roof ...

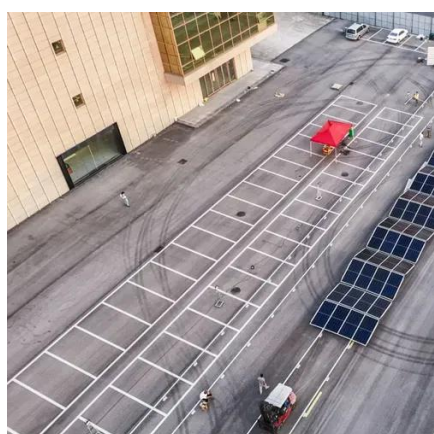


Mastering Photovoltaic Panel



Construction Drawings: From Blueprint ...

Ever tried assembling furniture without instructions? That's what installing solar panels feels like without proper photovoltaic panel construction drawings. These technical documents are the DNA of any ...



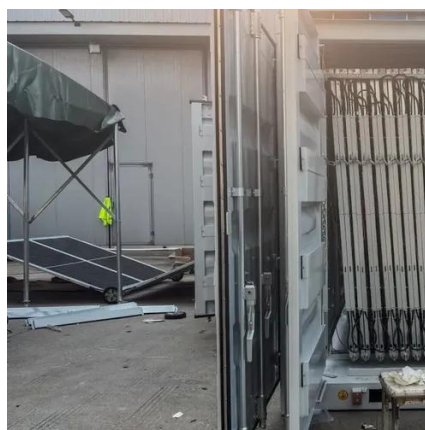
[Photovoltaic panel electrical construction process diagram](#)

A solar panel is a device that converts sunlight into electricity by using photovoltaic (PV) cells. PV cells are made of materials that produce excited electrons when exposed to light.



[Steps and layout of solar module manufacturing process](#)

Our production lines are designed to meet the highest standards of quality in the photovoltaic industry. The proposed solutions include 4 different lines, of 20, 45, 70 and 100 MW of ...





Contact Us

For catalog requests, pricing, or partnerships, please visit:

<https://id2market.eu>

Phone: +34 910 56 87 45

Email: info@id2market.eu

Scan the QR code to access our WhatsApp.

