



# Photovoltaic panel connected diode





## Overview

---

Photovoltaic cell inside a solar panel is a simple semiconductor photodiode made from interconnected crystalline silicon cells which suck/absorb photon from the direct sunlight on its surface and convert it to the electrical energy. the photovoltaic cells are. Bypass diodes are connected in parallel across solar cells to provide an alternative current path when the voltage across a cell is negative due to shading or it becoming faulty This use of bypass diodes in solar panels allows a series (called a string) of connected cells or panels to continue. In different types of solar panels designs, both the bypass and blocking diodes are included by the manufactures for protection, reliable and smooth operation. We will discuss both blocking and bypass diodes in solar panels with working and circuit diagrams in details below. The solar panels you see installed on rooftops and in fields may appear deceptively simple from the outside. You may be wondering, what is the difference?

Well, not much.



## Photovoltaic panel connected diode



### [Photovoltaics \(PV\) - Definition & Detailed Explanation](#)

Photovoltaic systems work by utilizing solar cells to convert sunlight into electricity. These solar cells are made up of semiconductor materials, such as silicon, that absorb ...

### **What is Blocking Diode and Bypass Diode in Solar Panel Junction Box?**

There are two types of diodes are used as bypass diode in solar panels which are PN-Junction diode and Schottky diode (also known as Schottky barrier diode) with a wide range of ...



### [Solar PV Energy Factsheet , Center for Sustainable Systems](#)

Solar energy can be harnessed two primary ways: photovoltaics (PVs) are semiconductors that generate electricity directly from sunlight, while solar thermal technologies use sunlight to heat ...

### [What Are Photovoltaics? \(2026\) , ConsumerAffairs®](#)

Photovoltaic technology lets you generate electricity from a renewable source: the sun. Unlike traditional methods of electricity generation, which often rely on fossil fuels, ...



## How to use an ideal diode controller as a scalable input bypass ...

In this article, we'll discuss a scalable bypass circuit solution using a floating-gate ideal diode controller. This circuit addresses challenges related to bypass switches with wide voltage support in solar ...

## Photovoltaics and electricity

A photovoltaic (PV) cell, commonly called a solar cell, is a nonmechanical device that converts sunlight directly into electricity. Some PV cells can convert artificial light into ...

ESS



## Why Bypass Diode is Used in Solar Panel?

Schottky diodes are the most common type of bypass diode used in solar panels. These diodes typically have current ratings between 1 and 60 amperes and voltage ratings of up to 45 volts, ...

## Photovoltaics



Photovoltaics (PV) is the conversion of light into electricity using semiconducting materials that exhibit the photovoltaic effect, a phenomenon studied in physics, photochemistry, and ...



## Diodes for Solar Panels

In this article, we'll explore the critical role of diodes in solar panels, focusing on how they work, why they're essential, and how to select the right diode for your solar setup.

## [Photovoltaics , Department of Energy](#)

Photovoltaic (PV) technologies - more commonly known as solar panels - generate power using devices that absorb energy from sunlight and convert it into electrical energy through ...



## [How Do Solar Cells Work? Photovoltaic Cells Explained](#)

The conversion of sunlight, made up of particles called photons, into electrical energy by a solar cell is called the "photovoltaic effect" - hence why we refer to solar cells as ...

## [The Role of Diodes in Solar Panels](#)



## Explained

We'll look at what diodes are, the types used, and their specific roles in photovoltaic systems. Whether you're an aspiring solar installer or just curious about how these green energy ...



## Bypass Diodes in Solar Panels and Arrays

Two types of diodes are available as bypass diodes in solar panels and arrays: the PN-junction silicon diode and the Schottky barrier diode. Both are available with a wide range of current ratings.



## **Bypass Diodes in Solar Panels**

In this tutorial, we will learn about Photovoltaic Cells, Solar Panels, Construction of Solar Cells, Photovoltaic Arrays, the need for Bypass Diodes in Solar Panels, maximum power from solar ...



## **How to Connect Diode to Solar Panels (diode Types & how to ...**

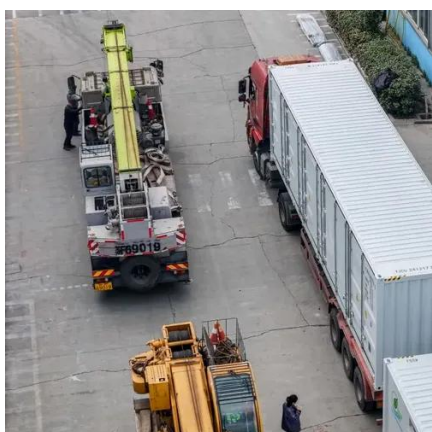
The article also provides step-by-step instructions on how to connect a diode to a solar panel, including testing the diode and best practices for installation.

## Technical Note Bypass Diode Effects in



## Shaded Conditions

The bypass diodes are usually placed on sub-strings of the PV module, one diode per up to 20 PV cells. This configuration eliminates the creation of hot-spots and enables the PV modules to operate with ...



## Do Solar Panels Need Blocking or Bypass Diodes?

A question that I get asked often is; do solar panels need blocking or bypass diodes? In this article I answer both of these questions with examples.



## Contact Us

---

For catalog requests, pricing, or partnerships, please visit:

<https://id2market.eu>

Phone: +34 910 56 87 45

Email: [info@id2market.eu](mailto:info@id2market.eu)

Scan the QR code to access our WhatsApp.

