



Photovoltaic panel frame size





Overview

Q1: What are the standard dimensions of a solar panel in 2025?

A1: For homes, it's about 1. For commercial projects, around 2. Q2: Do bigger panels mean better performance?

Not always. Standard Residential Panels Optimize Space and Handling: The industry-standard 60-cell panel dimensions (65" × 39" × 1.5") aren't arbitrary - they represent the optimal balance between power output, installation ease, and roof space utilization. Alright, your roof square footage is 1000 sq ft. Can you put a 5kW solar system on your roof?

For that, you will need to know what size is a typical 100-watt solar panel, right?

To bridge that gap of very useful knowledge needed. What is the most common residential solar photovoltaic panel size I will encounter?

The standard residential solar photovoltaic panel size you'll see most often is based on a 60-cell configuration, typically measuring about 67 inches long by 40 inches wide. Another commercial type is a 96-cell. Solar panel size shapes everything from the watts to the ease of lifting a module onto a roof.



Photovoltaic panel frame size



[standard solar photovoltaic panel sizes explained](#)

Discover standard solar photovoltaic panel sizes. Choose the perfect fit for your installation with our expert guide. Learn more today!

[Detailed Guide to Solar Panel Size & Dimensions](#)

Choosing the proper system is not only about the solar panel dimensions. You should also consider wattage, number of cells, layout possibilities, and energy consumption. Also, your ...



[Solar Panel Size Guide , Best Panel Size for Your Roof](#)

Solar cells are assembled in grids, and the most common configurations are 60-cell panels for residential use and 72-cell panels for commercial or utility use. A 60-cell panel (often seen on ...



Understanding Solar Panel Dimensions In 2025: A Complete Size Guide

Explore the most common solar panel dimensions in 2025, including residential and commercial sizes. Learn how solar panel size dimensions affect power, installation, and efficiency.

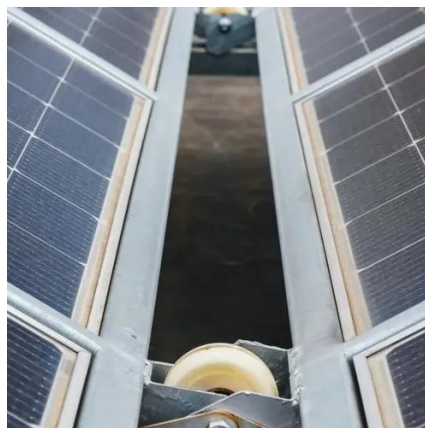


[Solar Panel Size & Dimensions Guide 2025 _ Complete Specs](#)

In this comprehensive guide, you'll learn everything you need to know about solar panel sizing, from standard dimensions to weight considerations, helping you determine the perfect solar ...

[Solar Panel Sizes \(Energy Use & Dimensions Guide\)](#)

How Thick Is A Panel? A home solar panel typically measures 66 by 40 inches and weighs around 42 pounds, with frame thickness between 32 millimeters and 40 millimeters. But ...



[How To Read A Solar Panel Spec Sheet: A Complete Guide](#)

Most crystalline solar panels are encapsulated by aluminum frames, adding an additional 1.25' * 1.6' to their footprint. Frameless panels and thin film panels do not require this additional ...



[Solar Panel Size: 2026 Detailed Guide](#)



In this article, we will discuss all the important aspects of solar panel size. This guide will help you select the right solar panel size through detailed calculations.

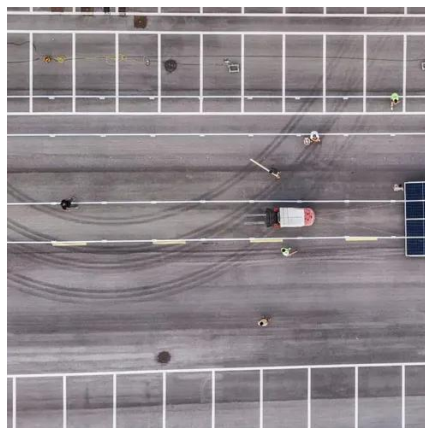


Standard Solar Panel Sizes And Wattages (100W-500W Dimensions)

The goal here is to get to the average solar panel size by wattage. You can find typical dimensions of 100W, 150W, 170W, 200W, 200W, 220W, 300W, 350W, 400W, and 500W solar panels summarized ...

[The Ultimate Guide to Solar Panel Dimensions and Sizes](#)

In this guide, we covered everything about solar panel dimensions and sizes, including different types of panels, their wattage, typical measurements, and how to choose the right size for ...





Contact Us

For catalog requests, pricing, or partnerships, please visit:

<https://id2market.eu>

Phone: +34 910 56 87 45

Email: info@id2market.eu

Scan the QR code to access our WhatsApp.

