



Photovoltaic panel support location requirements and standards





Overview

2 of the OSSC the structure of the building supporting the photovoltaic panels or modules shall be designed to accommodate the full solar photovoltaic panels or modules and ballast dead loads, including concentrated loads from the support . Following section 1607. Environmental Protection Agency (EPA) to assist builders in designing and constructing homes equipped with a set of features that make the installation of solar energy systems after the completion of the home's. That whole system—the panels, the racks, the wiring—has to be engineered to survive. I mean, it needs to be safe and built to last. The way you design and bolt them down completely changes depending on the site. Access pathways are intended to provide access to. This Interpretation of Regulations (IR) describes the Division of the State Architect (DSA) requirements for review and approval of solar systems (see Definitions) used in construction projects under the jurisdiction of DSA. The module (s) shall be mounted either on the rooftop of the house or on a metal pole that can be fixed to the wall of the house or separately in the ground, with the module (s) at least 3 (4) meters off the ground. Minimum. Install a mounting system for solar thermal or solar photovoltaic panels. Consider the roof type (material and slope), weatherproofing, installation convenience, and wind and snow loadings.



Photovoltaic panel support location requirements and standards



[Structural Requirements for Solar Panels](#) -- Exactus Energy

This comprehensive guide outlines the structural requirements for solar panels and provides an overview on the inner workings of the installation process.

[Standards for the Module Support Structure](#)

It is recommended that the module mounting structure be supported on top of a pole at least 50 cm long or fixed with supporting angles at four positions. The mounting structure must be anchored to the ...



[Residential Solar Panel Requirements](#)

NFPA 1 provides guidance on how solar photovoltaic panels must be installed on the roofs of homes.

[IR 16-8: Solar Photovoltaic and Thermal Systems Review and](#)

Structural design requirements for primary framing of buildings or structures supporting solar systems and for anchorage of those systems are discussed in Sections 1 through 4 below of this IR. Solar ...



[Building Codes for Solar Panel Installation](#)

In this article, we'll dive deep into the ins and outs of building codes for solar panel installation, covering everything from structural integrity and electrical safety to fire prevention and ...



Roof Anchor System for Solar Panels

A research paper exploring the installation and mounting of solar photovoltaic (PV) panels on rooftops and the challenges faced by system designers and installers.



[Structural Design Requirements for Solar Installations](#)

Learn more about structural design requirements for solar installations in the City of Portland. The solar installations and their supporting structures shall be designed following section 1607.14.4 of the ...

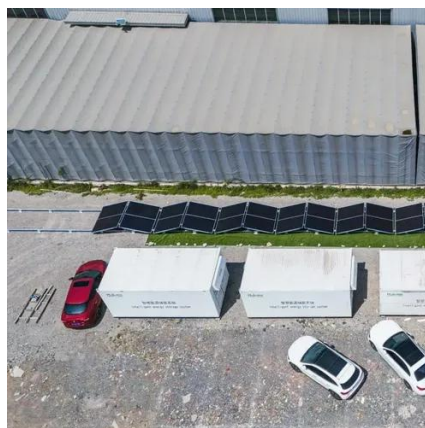


[Solar Photovoltaic: SPECIFICATION.](#)



CHECKLIST AND GUIDE

Builders that intend to meet both the solar PV and solar water heating RERH specifications should detail the location and the square footage of the roof area to accommodate both technologies.



Photovoltaic panel support requirements and standards

This blog will aim to answer several questions related to evaluating solar panel damage and liability claims such as whether the code has information on solar panel loading and requirements (spoiler ...

Updates on ASCE 7 Standard for Solar PV Systems

Find out how the ASCE 7 standard affects wind load, seismic load, and tornado load considerations for solar photovoltaic (PV) systems.





Contact Us

For catalog requests, pricing, or partnerships, please visit:

<https://id2market.eu>

Phone: +34 910 56 87 45

Email: info@id2market.eu

Scan the QR code to access our WhatsApp.

