

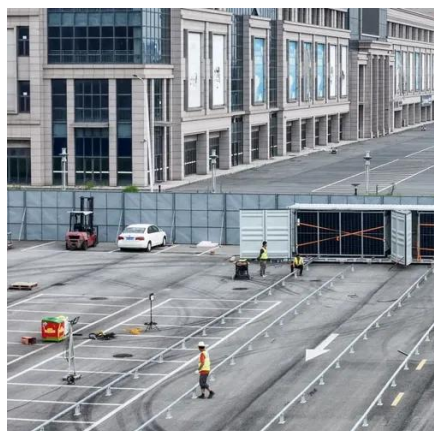


# Photovoltaic panel wind pressure test diagram





## Photovoltaic panel wind pressure test diagram



### [Wind Load Calculations for PV Arrays](#)

We provide examples that demonstrate a step-by-step procedure for calculating wind loads on PV arrays.

### TECHNICAL NOTE No.5 Simulated Wind Load Strength Testing ...

The CTS provides a service to the building industry for testing the effects of wind forces on buildings and building components. CTS has the equipment and technical expertise to test photovoltaic (PV) solar ...



### [Wind Design For Rooftop Solar Panels Based on ASCE 7-16 ...](#)

In this article, we'll explore the fundamentals of wind design for rooftop solar panels and how to ensure your installation is built to withstand the elements. Rooftop solar panels are exposed ...



### [Solar Panel Wind Load Calculation ASCE-7-16 , SkyCiv](#)

Users can enter the site location to get the wind speed and terrain data, enter the solar panel parameters and generate the design wind pressures. With the standalone version, you can ...



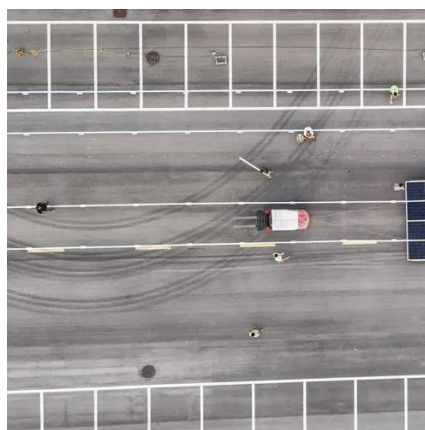
## Standard drawing for wind pressure test of photovoltaic panels

One recommendation included wind load testing for ground-mounted solar arrays. Cyclic loading of dynamic wind loads caused considerable damage to the ground-mounted arrays. A second ...



## Wind pressure characterization on ground-mounted solar PV systems: ...

This study introduces a novel integrated methodology combining wind tunnel (WT) experiments, Computational Fluid Dynamics (CFD), and Finite Element Analysis (FEA) to thoroughly ...



## Solar Panel Wind Load Guide , ASCE 7-16 & 7-22 , Rooftop & Ground ...

Complete guide to solar panel wind load calculations per ASCE 7-16 and ASCE 7-22. Learn GC<sub>r</sub>n coefficients, roof zones, ground-mount provisions (Section 29.4.5), and design wind pressures for PV ...

## [Wind Load Calculations for Solar PV](#)



## Arrays

The Solar America Board for Codes and Standards put together a report to assist solar professionals with calculating wind loading and to design PV arrays to withstand these loads.



- LiFePO<sub>4</sub>
- Wide temp: -20°C to 55°C
- Easy to expand
- Floor mount&wall mount
- Intelligent BMS
- Cycle Life:≥6000
- Warranty :10 years



## **Wind Load Considerations for Solar Panels: A Comprehensive Guide**

This comprehensive guide covers the significance of wind load calculations, factors affecting solar panel performance, design strategies, and installation best practices.

## Photovoltaic panel wind pressure test method diagram

Itaic (PV) panel system with a 25 & #176; tilt angle. They found that in terms of forces and overturning moments, 45 & #176;,, 135 & #176;; an 180 & #176; represents the critical wind directions.





## Contact Us

---

For catalog requests, pricing, or partnerships, please visit:

<https://id2market.eu>

Phone: +34 910 56 87 45

Email: [info@id2market.eu](mailto:info@id2market.eu)

Scan the QR code to access our WhatsApp.

