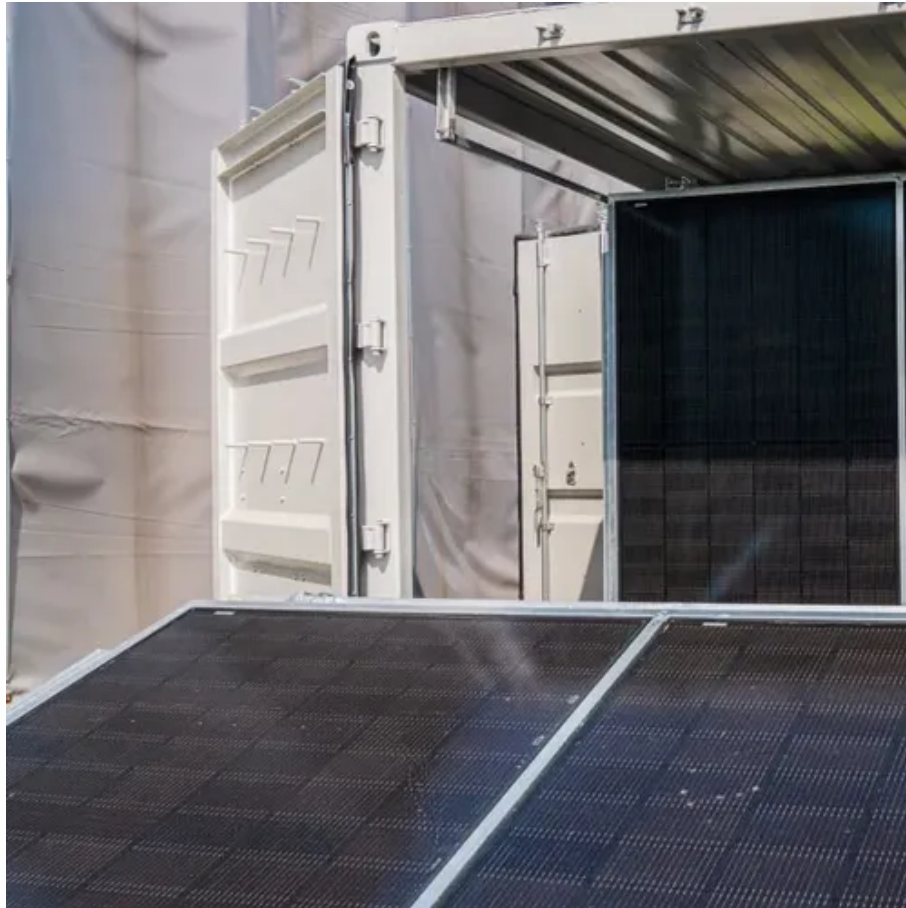




Photovoltaic panels 580





Photovoltaic panels 580



[How to Choose Solar Panels 580W: A Complete Buying Guide](#)

Learn how to choose solar panels 580w with key specs, types, and value tips. Make an informed decision for your energy needs.

Philadelphia Solar Pallet of 580 Watt Nexus 144 Cell Bifacial Solar

Experience cutting-edge solar technology with Philadelphia Solar PS-M144HCBF 550W Bifacial Modules. Built for durability, efficiency, and long-term performance, these state-of-the-art panels are ...



580 Watt Solar Panel: High-Efficiency Power for Homes & Businesses

Looking for a reliable 580 watt solar panel? Discover top-tier monocrystalline panels with 21% efficiency, 25-year warranties, and bulk pricing. Click to explore premium options now!

[SolarSpace 580W Solar Panel 144 Cell Bifacial SS8-72HD-580N](#)

SolarSpace SS8-72HD-580N is a PV module fit for both residential and commercial applications. SolarSpace engineers made the SS8-72HD-N series durable and efficient while ...



[Best N Type 560Watt/570W/580Watt Mono Solar Panels](#)

With a lifespan of 30 years, this SP580M-72H module provides 10-30% more power generation compared to conventional P-type modules, maximizing your return on investment. The N-type solar ...



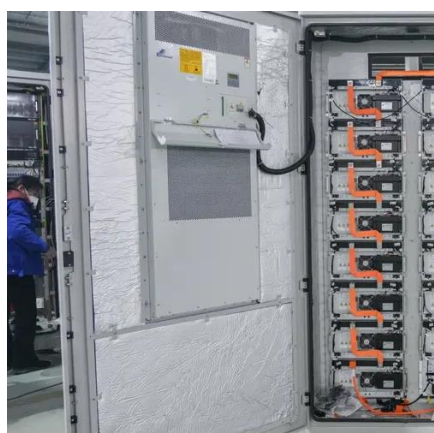
580 Watt Solar Panels

The 580-watt solar panels offer great power output, making them a top choice compared to lower-wattage modules. Whether you're powering a home, business, or large-scale utility project, ...



[MEGA 580 BIFACIAL , 580 Watt Bifacial Solar Panel](#)

The MEGA 580 solar panel is engineered to deliver maximum solar output with minimal space, system complexity, and cost. Generating 580W of power at 24V, it's a reliable solution for residential, ...



[SolarSpace 580W N-Type Bifacial Solar](#)



[Panel SS8-72HD-580](#)

Built with advanced N-Type monocrystalline cell technology, this 580W module delivers strong front-side output with improved resistance to light-induced degradation. N-Type cells are designed to maintain ...



[580 watt Axitec Solar Mono TOPCon Bifacial XXL Solar Panel](#)

The 580 watt Axitec TOPCon monocrystalline bifacial XXL solar panel delivers exceptional power and performance, making it an ideal choice for high-capacity commercial, industrial, and utility-scale solar ...

[Solar panels 580W - TrinaSolar Vertex TSM-DE19R](#)

Designed with efficiency and performance in mind, these panels boast a power output of 580W, making them ideal for various residential, commercial, and industrial applications.





Contact Us

For catalog requests, pricing, or partnerships, please visit:

<https://id2market.eu>

Phone: +34 910 56 87 45

Email: info@id2market.eu

Scan the QR code to access our WhatsApp.

