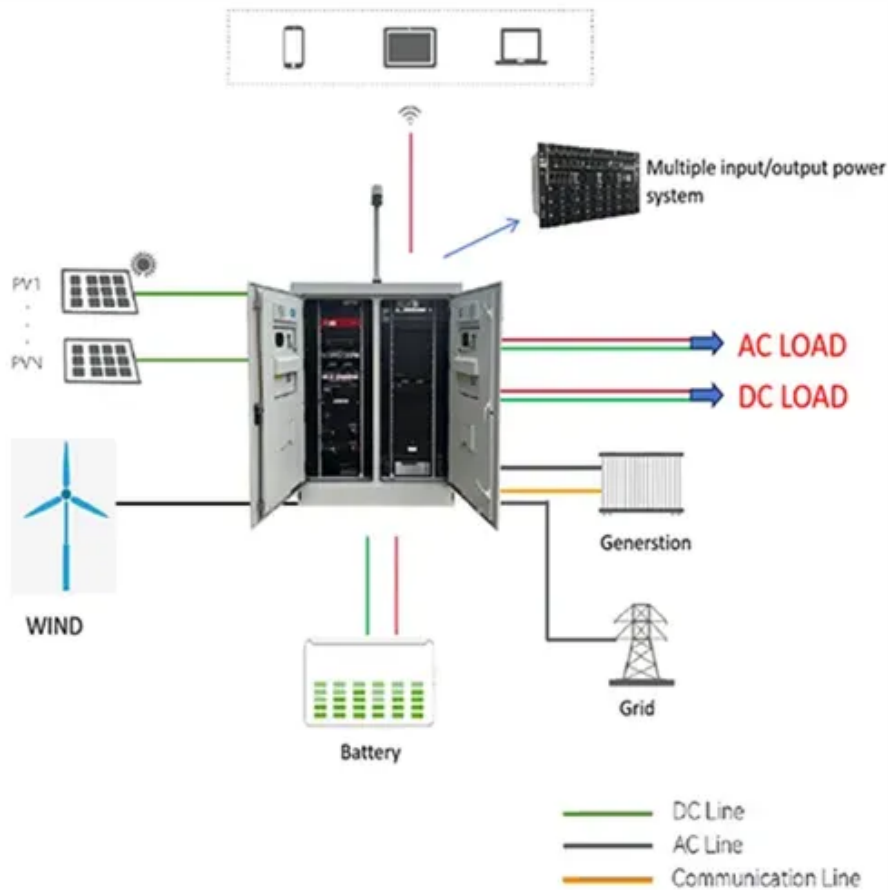




Photovoltaic panels bear multiple loads





Overview

This comprehensive guide explains typical weights, how to calculate loads, and practical steps for safe design, permitting, and long-term performance. The. Solar panels add valuable energy to homes, but their weight matters for roof integrity. Understanding how to accurately assess weight distribution on your roof helps prevent damage and maximizes your investment. When calculating the necessary load capacity of a roof, you need to figure in what's known as the dead load along with live loads or environmental loads. Most high-strength solar panels are designed to support loads exceeding 5400 Pa, which is roughly equivalent to 540 kg per square meter.



Photovoltaic panels bear multiple loads



Weight of Solar Panels on Roof: Understanding Mass, Roof Load, and

Solar panels add valuable energy to homes, but their weight matters for roof integrity. This article explains typical panel weights, how mounting hardware contributes to total mass, and ...

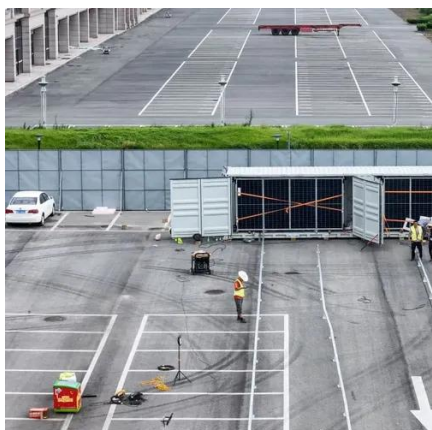
Roof Load Distribution Calculations for Solar Panel Structural Safety

Roof load distribution calculations for solar panel structural safety are essential for ensuring your solar energy system remains secure and effective. Understanding how to accurately ...



Weight Of Solar Panels On Roof: Detailed Guide For Safe Solar

The average weight of solar panels on a roof is manageable by almost every modern U.S. home, typically adding just 3-5 pounds per square foot. Professional assessment and correct ...



Weight of Solar Panels on Roof and What Homeowners Should Know

However, one common concern is the weight of solar panels on roofs and whether existing structures can handle the additional load. This article explores the weight considerations of ...

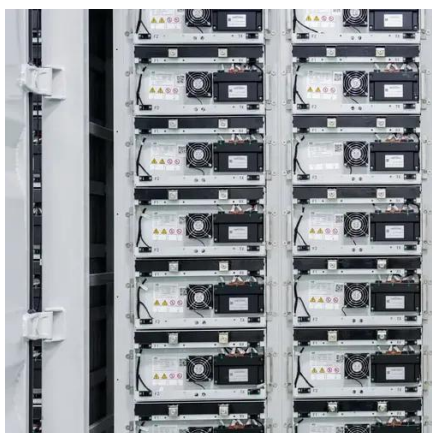


Weight of Solar Panels on Roof: Understanding Panel and ...

The weight of solar panels on roof depends on panel size, frame material, and mounting hardware, while the total system load also includes racking, ballast, and connections.

Solar Panel Weight Impact on Roof: 5 Key Factors to Consider

When installing solar panels, it's essential to make sure the roof can support this additional weight without compromising its integrity. Factors such as the roof's material, age, ...



CAN YOUR ROOF HANDLE THE WEIGHT OF SOLAR ...

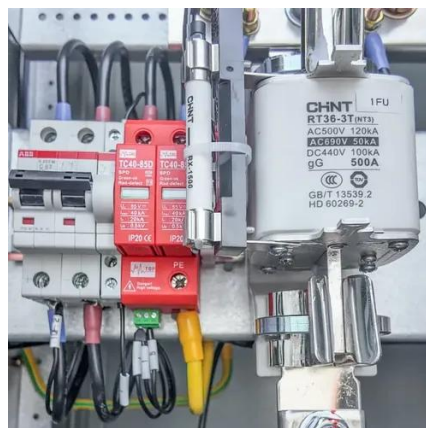
The roof must be able to support the sum of its dead load and any anticipated live load, so the roof has to be designed with a load limit that takes into account both of these loads.

Assessing Your Roof's Load-Bearing



Capacity for Solar Panels

Assessing the material and condition of your roof is crucial for determining its load-bearing capacity and identifying any structural weaknesses that may affect solar panel installation.

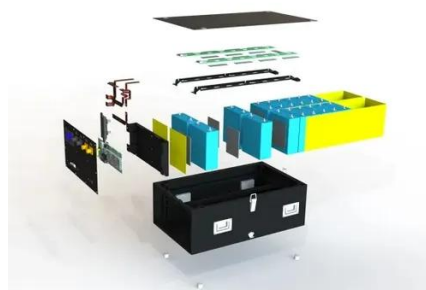


[Understanding Roof Load Capacity for Solar Panels](#)

Learn more about all you need to know about roof loads, load capacities and how they determine if a roof can support the weight of solar panels. Roof load capacity is simply a ...

[How much weight can high-strength solar panels bear?](#)

The detailed specifications and load-bearing capacities vary by manufacturer and model, with certain industrial-grade panels engineered for even heavier loads, making them adaptable for ...





Contact Us

For catalog requests, pricing, or partnerships, please visit:

<https://id2market.eu>

Phone: +34 910 56 87 45

Email: info@id2market.eu

Scan the QR code to access our WhatsApp.

