



# Photovoltaic panels connected in series to the controller





## Overview

---

Connecting your panels in series will increase the voltage level and keep the amperage the same. The reason why series connections are utilized with MPPT controllers is that MPPT Controllers actually are able to accept a higher voltage input, and still be able to charge your 12V or. Voltage Calculation is Critical for Safety: Series wiring adds voltages together, and temperature variations can push systems beyond safe limits. Always calculate maximum cold-weather voltage using temperature coefficients to ensure you stay within NEC's 600V limit for residential installations and. When panels are connected in series, shade on one panel can significantly reduce the output of the entire string - like one bad bulb affecting a whole string of Christmas lights. Parallel connections are more forgiving with shade since each panel operates more independently. This ensures safety, efficiency, and maximum energy output from your system. You can do that one of two ways (or a hybrid of both).



## Photovoltaic panels connected in series to the controller



### [How To Wire Solar Panels In Series Vs. Parallel](#)

Circuits wired in series work the same way for solar panels. If there is a problem with the connection of one panel in a series, the entire circuit fails. Meanwhile, one defective panel or loose wire in a ...

### [How To Wire Solar Panels In Series: Complete Guide 2025](#)

Wiring solar panels in series means connecting the positive terminal of one panel to the negative terminal of the next panel, creating a chain that increases total voltage while maintaining the ...



### [Guide to Connect Solar Panels in Series - PowMr](#)

Learn how to connect solar panels in series and calculate the maximum number of solar panels in a series string for safe, efficient performance.

### [Connecting Solar Panels in Series or in Parallel?](#)

Series wiring increases the sum output voltage of a solar panel array but keeps amperage the same. Parallel wiring increases the sum output amperage of a solar panel array while ...



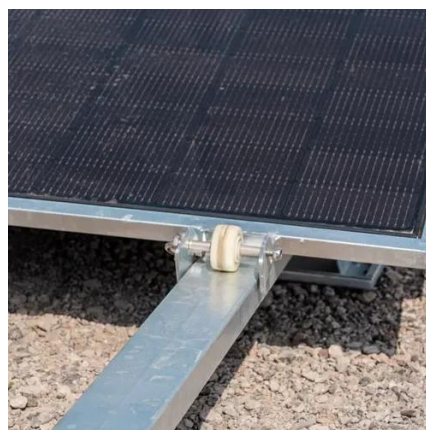
## [How To Safely Connect Solar Panels In Series Or Parallel](#)

"Learn how to connect solar panels in series or parallel, including wiring diagrams, voltage differences, and expert DIY tips. Master your solar setup today! As an Amazon Associate, we ...



## How to connect solar panels together: Series, parallel, combo

Wondering how to connect solar panels together or even how to connect multiple solar panels together? In this guide, we'll explore three common wiring methods--series, parallel, and a ...



## Series vs. Parallel , Renogy US

Connecting your panels in series will increase the voltage level and keep the amperage the same. The reason why series connections are utilized with MPPT controllers is that MPPT Controllers actually ...

## [How to Connect Solar Panels in Series and](#)



## Parallel - ...

Learn how to connect solar panels in series or parallel for 12V and 24V systems. Boost efficiency, protect your equipment, and power off-grid devices safely.



## How to Connect Solar Panels: Series vs. Parallel

To connect solar panels in series, connect one panel's positive terminal to the next panel's negative terminal. Repeat this process until all of your panels are connected in series.



## Contact Us

---

For catalog requests, pricing, or partnerships, please visit:

<https://id2market.eu>

Phone: +34 910 56 87 45

Email: [info@id2market.eu](mailto:info@id2market.eu)

Scan the QR code to access our WhatsApp.

