



Photovoltaic panels directly fixed





Overview

Ground-mounted solar panels are photovoltaic systems installed directly on the ground rather than on rooftops. These systems are supported by metal frames or pole structures anchored into the earth, allowing for customizable tilt and orientation. As solar installations grow, particularly ground-mounted PV systems, the decision between a fixed tilt system and a tracker system becomes increasingly critical. TL; DR: PV modules are cheap enough today that the simple fixed arrays are more cost-effective than single-axis tracked arrays. While single-axis arrays still. Today, we'll break down the two major types of panels—tracking and fixed—and help you make the right choice. Both options have their pros and cons, of course. Increased exposure to sunlight means more energy generation for homes or businesses.



Photovoltaic panels directly fixed

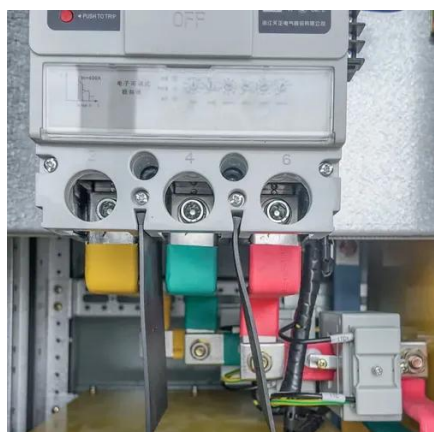


Choosing PV structures: Trackers vs Fixed vs East-West (Case study)

See why fixed ground-mount arrays are the most cost-effective for rural off-grid solar and how to tell if your solar field is producing enough power.

[Tracking Solar Panels vs. Fixed Solar Panels](#)

Fixed solar panels, also known as fixed arrays, are stationary and do not move with the sun's motion. These panels are mounted at a fixed tilt and azimuth angle, typically based on the site's latitude and ...



[Solar Photovoltaic System Design Basics](#)

PV arrays must be mounted on a stable, durable structure that can support the array and withstand wind, rain, hail, and corrosion over decades. These structures tilt the PV array at a fixed angle ...

Let's Do the Math: Why Fixed Solar Arrays Are the Most Cost ...

See why fixed ground-mount arrays are the most cost-effective for rural off-grid solar and how to tell if your solar field is producing enough power.



[5 Things You Need to Know about Fixed-tilt Solar Racking](#)

What Is a Fixed Tilt System? A fixed tilt system is a type of solar panel installation in which the solar panels are mounted at a fixed angle and orientation, typically facing south to ...



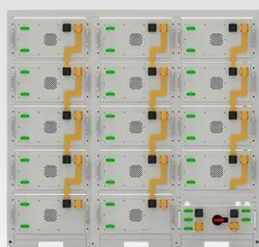
[Tracking Solar Panels vs Fixed: Pros, Cons & Differences](#)

Today, we'll break down the two major types of panels--tracking and fixed--and help you make the right choice. Both options have their pros and cons, of course. We'll start by taking a close ...



[Ground-Mounted Solar Panels: The Homeowner's Ultimate Guide](#)

What Are Ground-Mounted Solar Panels? Ground-mounted solar panels are photovoltaic systems installed directly on the ground rather than on rooftops. These systems are supported by ...



Battery String-S224

- 1C Charge/Discharge
- Easy configuration and maintenance
- Power supply can be single battery string or parallel battery strings

What To Know Before Purchasing



Fixed or Portable Solar Panels

Fixed solar panels, also known as fixed solar photovoltaics or fixed PV panels, are mounted panels on a roof, ground mount, or tracker system, and generate electricity by capturing the sun's rays. Inverters ...



[Solar Module Mounting Structures: Fixed Tilt vs Tracker](#)

Solar mounting systems fall primarily into two categories: fixed tilt solar mounting systems and solar tracker mounting systems. Fixed tilt systems mount solar panels at a selected angle, which is fixed ...

Fixed Tilt or Tracking System - How To Maximize The Efficiency of

What is a Fixed Tilt PV System? A fixed tilt photovoltaic system is a ground-mounted solar array where the solar panels are set at a specific angle. Once installed, the panels remain in ...



Choosing PV structures: Trackers vs Fixed vs East-West (Case study

Choosing the right PV structure for your project leads directly to greater efficiency, power output, and ROI. In this post, we outline the three main PV plant structures and share RatedPower ...



Contact Us

For catalog requests, pricing, or partnerships, please visit:

<https://id2market.eu>

Phone: +34 910 56 87 45

Email: info@id2market.eu

Scan the QR code to access our WhatsApp.

