



Photovoltaic panels in series have different currents



GEL Battery



Lithium Battery



Container storage system



Power Battery





Overview

When you connect solar panels in series, the total output current of the solar array is the same as the current passing through a single panel, while the total output voltage is a sum of the voltage drops on each solar panel. Connecting more than one solar panel in series, in parallel or in a mixed-mode is an effective and easy way not only to build a cost-effective solar panel system but also helps us add more solar panels in the future to meet our increasing daily needs for electricity. The options to wire various solar panels in a system are either series or parallel. It is important to understand these two configurations as we have to estimate our home needs or power storage for. A Solar Photovoltaic Module is available in a range of 3 WP to 300 WP. When you wire. Photovoltaic solar panels are semiconductor devices that covert sunlight (irradiance) into electrical DC energy but it is the PV panels individual solar cells which are responsible for converting the sunlight into electricity.



Photovoltaic panels in series have different currents

INTEGRATED DESIGN

EASY TO TRANSPORT AND INSTALL,
FLEXIBLE DEPLOYMENT

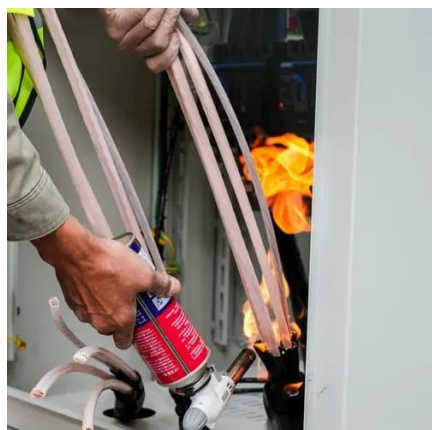


Solar Panel Series Vs Parallel: Wiring, Differences, And Your Right

In this tutorial, I'll show you how to wire solar panels in series and how to wire them in parallel. Once we've got that covered, I'll also explain the difference between these two ...

[How To Wire Solar Panels In Series: Complete Guide 2025](#)

Different panel technologies may also have varying temperature coefficients and degradation rates. For optimal performance in 2025 installations, use identical panels with matching ...



[Series Connected Solar Panels For Increased Voltage](#)

Connecting solar panels in series with different current ratings should only be used provisionally, because as we have seen, the solar pv panel with the lowest rated current is the one ...

[Mixing solar panels - Dos and Don'ts](#)

When you connect solar panels in series, the total output current of the solar array is the same as the current passing through a single panel, while the total output voltage is a sum of the voltage drops on ...

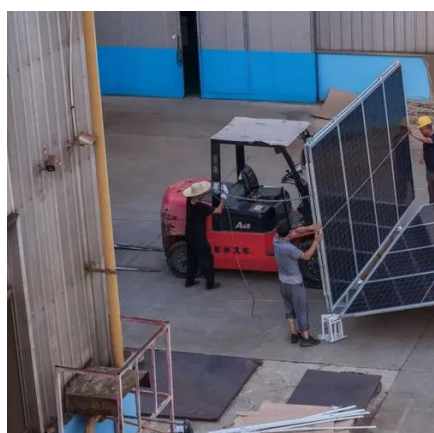


Connecting Solar Panels in Series Vs Parallel

A series connection of panels means batching of panels in a line in order of positive to negative. So, the solar array voltage increases but amperage remains the same.

Mixing Solar Panels that are Mismatched ? Clever Solar Power

No, it's not advised to wire solar panels with different current in series. They should be wired in parallel if they have different current. Can you put solar panels of different voltage in parallel?



Series, Parallel & Series-Parallel Connection of PV Panels

If all the modules in table 2 are connected in series then the current flowing through the series-connected modules is determined by the module with the lowest current.

Two Photovoltaic Panels with Same



Voltage but Different Current: Key

Summary: When designing solar energy systems, understanding current variations in photovoltaic panels with identical voltage ratings becomes critical. This article explains why current differences ...



[How To Wire Solar Panels In Series Vs. Parallel](#)

Solar panels wired in series increase the voltage, but the amperage remains the same. Solar inverters may have a minimum operating voltage, so wiring in series allows the system to reach that threshold.

[PV String Design Explained: Series, Parallel & MPPT Matching](#)

In a series connection, the positive terminal of one solar panel is connected to the negative terminal of the next -- much like joining them head to tail in a chain. This arrangement ...





Contact Us

For catalog requests, pricing, or partnerships, please visit:

<https://id2market.eu>

Phone: +34 910 56 87 45

Email: info@id2market.eu

Scan the QR code to access our WhatsApp.

