



Photovoltaic panels series and parallel characteristics





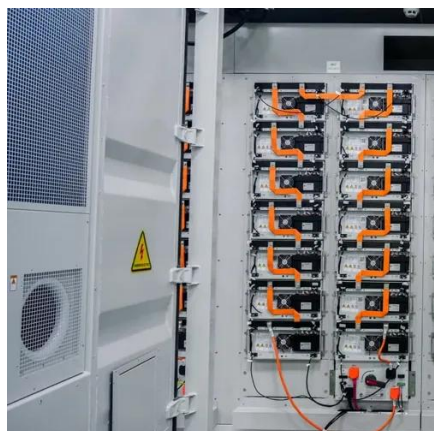
Overview

Series Wiring – Increases total voltage while current stays the same; ideal for long cable runs and voltage-based inverter requirements. Whether you're planning an RV solar setup, designing an off-grid cabin system, or expanding your. When it comes to solar panel series vs parallel connections, installers face a choice similar to Volta's: maximize voltage or current?

This decision can significantly impact your solar array's performance and efficiency. Understanding the differences between these configurations and their respective advantages and disadvantages is essential for anyone considering installing a. Understanding the distinction between PV panels series vs parallel connections is crucial for designing efficient and reliable solar energy systems. Finally, I'll discuss the pros.



Photovoltaic panels series and parallel characteristics



Series vs Parallel Solar Panels: Key Differences -- Direct Solar Power

Choosing between series and parallel solar panel connections depends on a variety of factors, including your location, energy needs, and budget. Series connections offer more efficiency ...

[Solar Panel Connection Methods: Series vs Parallel Analysis](#)

The essential differences between series and parallel wiring of solar panels are reflected in their effects on voltage and current. A series connection can increase the total system voltage ...



Solar Panels in Series vs. Parallel: 6 Difference and Which Is Better?

In this article, we explore how to join solar panels, define series and parallel connections, compare their characteristics, and help you decide which option is best for your setup.

The Ultimate Guide to Solar Panel Configurations: Series vs. Parallel

Choosing the right configuration for your solar panel system is crucial to ensure optimal performance and efficiency. When it comes to wiring and connecting multiple solar panels together, there are two ...



Series, Parallel & Series-Parallel Connection of PV Panels

When N-number of PV modules are connected in series. The entire string of series-connected modules is known as the PV module string. The modules are connected in series to increase the voltage in ...

Series Vs Parallel Solar Panels: Wiring Guide & MPPT Tips , SolarTech

Series vs parallel solar panels explained with wiring diagrams, MPPT/PWM, shading performance, and inverter tips. Compare setups and choose the right configuration--read the 2025 ...



PV String Design Explained: Series, Parallel & MPPT Matching

When sunlight falls on solar panels, each panel produces direct current (DC) electricity. Now, when multiple panels are connected correctly in series and parallel, their combined voltage and ...



Solar Panel Series Vs Parallel: Wiring, Differences, And Your Right

In this tutorial, I'll show you how to wire solar panels in series and how to wire them in parallel. Once we've got that covered, I'll also explain the difference between these two ...



[Solar Panel Series vs Parallel: Which is Better? , Renogy US](#)

Discover the optimal choice between solar panel series vs parallel configurations. Learn how to maximize efficiency with our guide on solar panels in series vs parallel setups.

Pv Panels Series Vs Parallel

The choice between these two configurations significantly impacts the overall voltage and current output of the system, ultimately determining its suitability for specific applications. This article ...





Contact Us

For catalog requests, pricing, or partnerships, please visit:

<https://id2market.eu>

Phone: +34 910 56 87 45

Email: info@id2market.eu

Scan the QR code to access our WhatsApp.

