



Photovoltaic power station inverter restart





Overview

To restart solar panels, the process involves a combination of checking connections, ensuring proper functionality, and possibly resetting the system. Check the inverter status, 2. A step by step guide for turning on, shutting down or restarting your inverter safely. Step 1: Locate your meterbox or switchboard and locate the "main switch inverter supply" and turn that to the ON position. If that does not work, the battery may be low and needs to be recharged.



Photovoltaic power station inverter restart



[DC String Inverter Shut Down and Restart Procedure](#)

In this video, we take you to the Hoxton Park Technical Training Centre to show you how to safely shut down and restart a DC String Inverter used with solar panels. Whether you're a solar

How to Effortlessly Reset Your Solar Panels After a Power Outage

Turn off the system: Before attempting a reset, switch off the entire solar power system, including individual solar panels and inverters. Wait a few minutes before proceeding to allow the ...



[Inverter is On But Not Working - Solved](#)

The Inverter Needs A Reset
Weak Battery
Loose Wiring
Defective device/appliance
System Overload
If your home is running on solar power, there are two ways to reset an inverter: a hard and soft reset. Try a soft reset. If that does not work, a hard or complete reset must be done. How to Soft Reset an Inverter
If you are looking for a good inverter, we recommend the Ampeak 2000 because it packs a lot of power and easy to set up. This o... See more on portablesolarexpert tesla

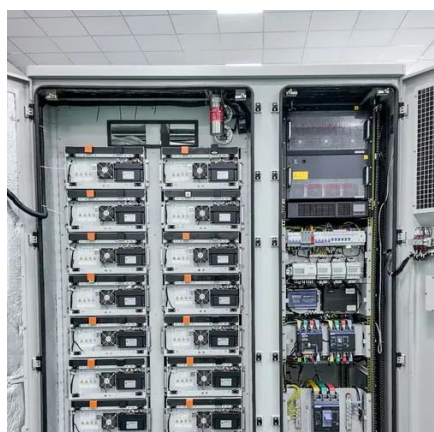
Resetting the Solar Inverter - Tesla

There are two options to reset the Solar Inverter:
Cycle the Solar Inverter AC breaker OFF then ON.
Select Reset Inverter in the Configuration Interface.



[How to restart solar panels , NenPower](#)

To restart solar panels, the process involves a combination of checking connections, ensuring proper functionality, and possibly resetting the system. 1. Check the inverter status, 2. ...

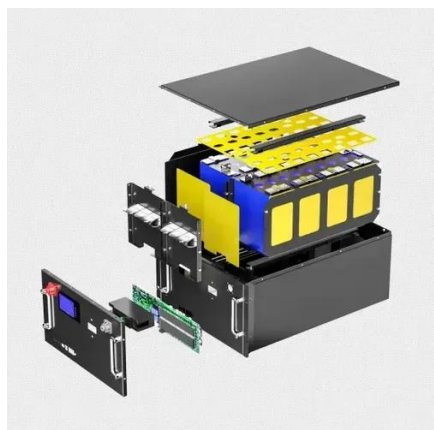
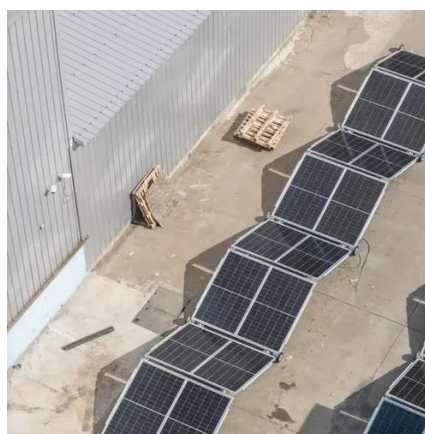


SolarEdge Reboot Instructions NEW

Once your system has been rebooted, it will take at least 5 minutes to fully power up and you will likely see the LED on the inverter go through several different color configurations. To learn about how to ...

Turning on, shutting down or restarting your inverter safely

Safely turn on, shut down, or restart your solar inverter with this step-by-step guide. Ensure proper operation and troubleshoot issues.



[Restart and Revive Your Solar System , SolarHubSolarHub](#)

Occasionally, you may find it necessary to restart your solar inverter to troubleshoot issues or optimize its performance. This guide will walk you through the steps to restart your solar inverter safely and ...



Inverter is On But Not Working - Solved

There are many reasons why your inverter is on but not working. Find out the causes and the solutions to this problem.



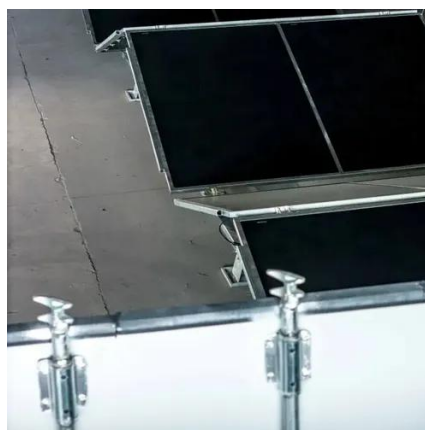
Emergency Solar PV Shutdown and Start-Up Procedure

Go to your inverter. Locate the AC ISOLATOR main switch and turn the switch to the OFF position. Alternatively, go to your fuse board, locate the PV ARRAY main switch, and flick to the OFF position.

...

How to Restart Your Solar Panel Inverter

After a storm, you may find your solar system offline, requiring a restart to restore functionality. Here's a step-by-step guide on how to safely restart your solar panel inverter after a ...



Resetting the Solar Inverter

There are two options to reset the Solar Inverter: Cycle the Solar Inverter AC breaker OFF then ON. Select Reset Inverter in the Configuration Interface.



Contact Us

For catalog requests, pricing, or partnerships, please visit:

<https://id2market.eu>

Phone: +34 910 56 87 45

Email: info@id2market.eu

Scan the QR code to access our WhatsApp.

