



# Photovoltaic support slope test specifications





## Overview

---

1 This practice details minimum requirements for the installation of roof mounted photovoltaic arrays on steep-sloped roofs with water-shedding roof coverings. Outlined in this document are the test conditions related to our. What are the requirements for solar panels on a low-slope roof?

Ballasted, unattached PV systems on low-slope roofs have to meet seven conditions to comply with seismic load requirements in Section 13. For low-profile systems, the height of the center of mass of any panel above the roof. Design specifications for photovoltaic support foundation using the engineering software program spMats. The selected solar panel is known as Top-of-Pole Mount (TPM), where it is designed to install quickly and provide a rete (PHC piles), steel piles and steel pipe screw piles. 2, and they are shown in Table 2. The technical approach of the highway slope PV power generation potential assessment. Typically, there are two stages at which load testing occurs: pre-design and construction.



## Photovoltaic support slope test specifications



### solar-system

Roof structures that support photovoltaic panel systems shall be designed to resist each of the following conditions: 1. Applicable uniform and concentrated roof loads with the photovoltaic panel system ...

### Slope photovoltaic support treatment

Slope support and foundation treatment are two important fields of geotechnical engineering. In recent years, some new materials and new technologies have been developed.



### Photovoltaic Solar Testing Specifications

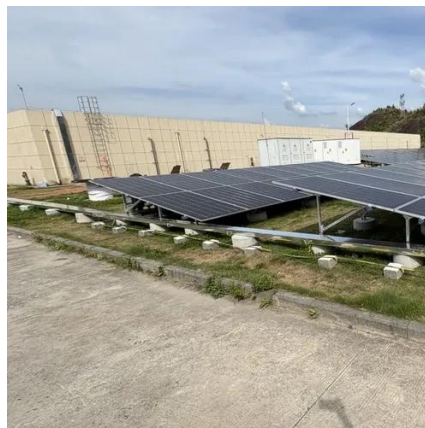
Listed below are the most common photovoltaic test specifications along with our Environmental Testing Guide that provides a general overview of common solar panel test specifications that require the ...



51.2V 150AH, 7.68KWH

### Design specifications for photovoltaic support foundation

Installing a photovoltaic (PV) array starts with selecting a suitable mounting structure, which will support the solar panels and place them at an optimal angle to receive



### Photovoltaic support pile test requirements

A pull test needs to be done before installing helical piles to determine the embedment depth and ensure there is enough resistance to satisfy the load requirements of



## **E2766 Standard Practice for Installation of Roof Mounted ...**

1.1 This practice details minimum requirements for the installation of roof mounted photovoltaic arrays on steep-sloped roofs with water-shedding roof coverings.



### **Specifications for photovoltaic support foundation test piles**

Photovoltaic support foundations are important components of photovoltaic generation systems, which bear the self-weight of support and photovoltaic modules, wind, snow, earthquakes and other loads.



## **How to calculate the slope of**



## photovoltaic power generation ...

Accurate assessment of the photovoltaic (PV) power generation potential in China is important for the reduction of carbon emission intensity and the achievement of the



## Design specification for photovoltaic support on steep slopes

While there is no strict minimum roof age for solar panel installation, newer roofs built with modern materials and properly maintained are generally better candidates.



## Structural Requirements for Solar Panels -- Exactus Energy

Is it a sprawling commercial rooftop? A slightly sloped residential home? A ground-mounted array? Every single location throws its own specific punches. You've got wind trying to peel ...

### **GRADE A BATTERY**

LiFePO4 battery will not burn when overcharged, over discharged, overcurrent or short circuited and can withstand high temperatures without decomposition.





## Contact Us

---

For catalog requests, pricing, or partnerships, please visit:

<https://id2market.eu>

Phone: +34 910 56 87 45

Email: [info@id2market.eu](mailto:info@id2market.eu)

Scan the QR code to access our WhatsApp.

