



# Power cuts and 5g base stations shut down





## Power cuts and 5g base stations shut down

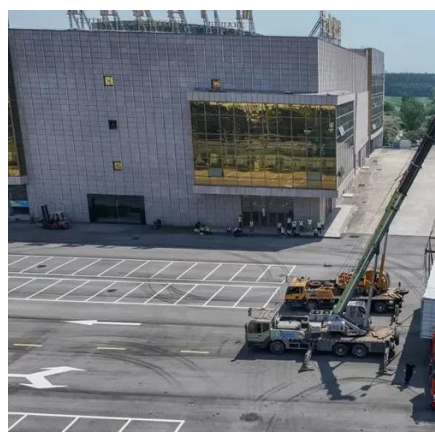


### Check network status

Let's check if there are any issues in your area. Where is the issue happening? Is this page helpful?

### Internet Outages Map

Gain a global view of outages across ISP, public cloud and edge service networks, as well as top SaaS providers.



### 5G base stations consume so much power that operators are forced to

According to predictions from Industrial Information Network, the number of 5G base stations will eventually be 1-2 times that of 4G base stations, reaching 5-6 million.

### Power Delivery Challenges with 5G NR

The two primary power delivery challenges with 5G new radio (NR) are improving operational efficiency and maximizing sleep time. For example, Ericsson estimates that 94% of the ...

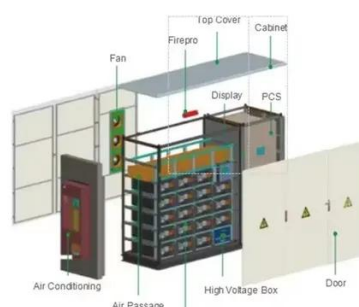


## Big Tech's data centers may face grid cutoffs during power crises , AP ...

As Big Tech's data centers continue to grow threatening to overload U.S. electricity grids, policymakers are considering bumping the energy-hungry data centers off grids during power emergencies.

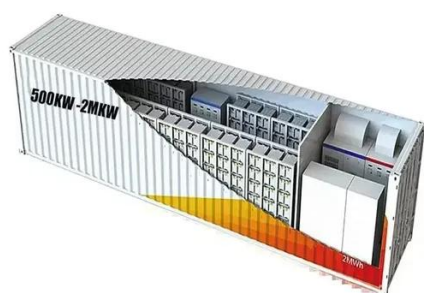
## Downdetector

Realtime overview of issues and outages with all kinds of services. Having issues? We help you find out what is wrong.



## [Detect internet outages and power cuts in real-time ...](#)

Detect internet outages and power cuts in real time near you, by leveraging millions geolocated reports from individual users in United States.



## NXP to shut down ECHO fab as it



## retreats from 5G RF power market

With deployment levels lagging earlier expectations and operators struggling to generate returns from 5G, demand for RF power devices has weakened across the industry.



## Are the three major operators shutting down 5G base stations to save

Wang Xiaochu, chairman of China Unicom, recently stated that 5G base stations are smart base stations that will automatically shut down or reduce capacity at night when there are no ...

## [Big Tech's data center boom poses new risk to US grid ...](#)

The risk of power outages will only grow as new data centers come online, the NERC forecast in a December report.





## Contact Us

---

For catalog requests, pricing, or partnerships, please visit:

<https://id2market.eu>

Phone: +34 910 56 87 45

Email: [info@id2market.eu](mailto:info@id2market.eu)

Scan the QR code to access our WhatsApp.

