



Power generation characteristics of the wind listener





Overview

This chapter deals with the characteristics of both the steady and fluctuating components of the wind, as an energy source and as aerodynamic forcing functions on wind turbine rotors. and world-wide wind resources are reviewed, including major methods of assessing. Wind Power Fundamentals Presented by: Alex Kalmikov and Katherine Dykes With contributions from: Kathy Araujo PhD Candidates, MIT Mechanical Engineering, Engineering Systems and Urban Planning MIT Wind Energy Group & Renewable Energy Projects in Action Renewable Energy Projects in. Wind turbines use blades to collect the wind's kinetic energy. Wind flows over the blades creating lift (similar to the effect on airplane wings), which causes the blades to turn. wind power, form of energy conversion in which turbines convert the kinetic energy of wind into mechanical or electrical energy that can be used for power. Virtually. of wind turbine generators applied in modern wind power plants. Hot air rises, reducing the local atmospheric pressure; nearby cooler air flows into this region of lower pressure both global and local forces.



Power generation characteristics of the wind listener



8 Characteristics of the Wind

This chapter deals with the characteristics of both the steady and fluctuating components of the wind, as an energy source and as aerodynamic forcing functions on wind turbine rotors. U.S. and world-wide ...

Wind power , Description, Renewable Energy, Uses, Disadvantages

Modern commercial wind turbines produce electricity by using rotational energy to drive an electrical generator. They are made up of one or more blades attached to a rotor and an ...



Wind Energy , Department of Energy

Wind power or wind energy is a form of renewable energy that harnesses the power of the wind to generate electricity. It involves using wind turbines to convert the turning motion of ...

[Wind Power Generation , Springer Nature Link](#)

This chapter comprehensively discusses wind power generation, tracing its evolution from historical windmills to modern large-scale wind farms, and analyzing its technical principles, resource ...



Characteristics of Wind Turbine Generators for Wind Power Plants

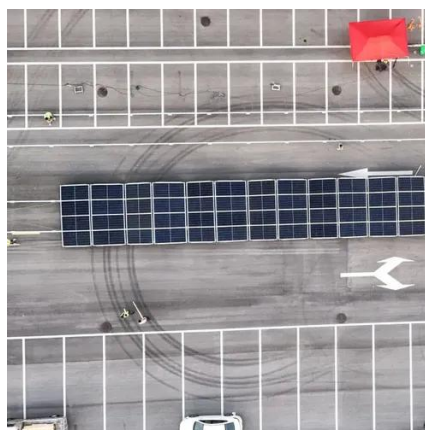
of wind turbine generators applied in modern wind power plants. Various wind turbine generator designs, based on classification by machine type and speed control capabilities, are discussed along with ...

WORKING PRINCIPLE



Electricity generation from wind

Wind flows over the blades creating lift (similar to the effect on airplane wings), which causes the blades to turn. The blades are connected to a drive shaft that turns an electric generator, ...



FUNDAMENTALS OF WIND TURBINES

The global capacity for generating power from wind energy has grown continuously since 2001, reaching 591 GW in 2018 (9-percent growth compared to 2017), according to the Global Wind ...



Lecture Wind Power generation



Wind Power generation Basic technology Wind electric generator converts kinetic energy available in wind to electrical energy by using rotor, gear box and generator.



Wind Power Fundamentals

Harvesting wind power isn't exactly a new idea - sailing ships, wind-mills, wind-pumps. 1st Wind Energy Systems. - Ancient Civilization in the Near East / Persia - Vertical-Axis Wind-Mill: ...

Wind Energy Factsheet

Wind supplies 57% of Denmark's electricity generation and over 20% in ten other countries. 7 Global wind additions reached a record 117 GW in 2023. 7 In 2024, onshore installations surpassed 100 GW ...





Contact Us

For catalog requests, pricing, or partnerships, please visit:

<https://id2market.eu>

Phone: +34 910 56 87 45

Email: info@id2market.eu

Scan the QR code to access our WhatsApp.

