



# Power standard per square meter of photovoltaic panels





## Overview

---

Solar panel wattage calculation represents the maximum electrical power a photovoltaic module can produce under Standard Test Conditions (STC). These standardized conditions include 1,000 watts per square meter of solar irradiance, 25°C cell temperature, and air mass of 1. Under optimal conditions (5 peak sun hours): At noon under direct sunlight: \*Note: 1m<sup>2</sup>. To measure this efficiency, use solar panel Watts per square meter (W/m). The basic solar panel. How many WP per square meter of solar panels The number of watts peak (WP) produced per square meter of solar panels can vary significantly based on multiple factors.



## Power standard per square meter of photovoltaic panels



### Standard Solar Panel Sizes And Wattages (100W-500W Dimensions)

Example: 5kW solar system is comprised of 50 100-watt solar panels. Alright, your roof square footage is 1000 sq ft. Can you put a 5kW solar system on your roof? For that, you will need to know what size is ...

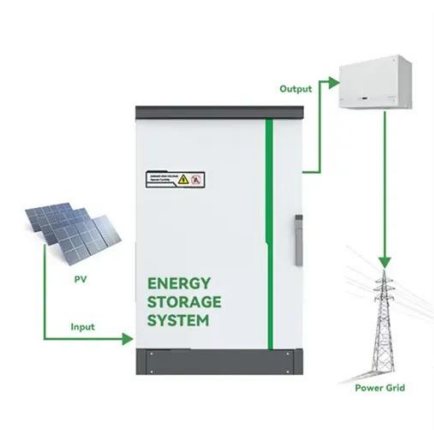
### [Solar Power per Square Meter Calculator](#)

A solar power per square meter calculator takes details regarding these factors and then gives the accurate output generated by the solar panel per square meter.



### How Much Power Does 1 Square Meter of Photovoltaic Panels ...

With advancing photovoltaic technologies, today's 1m<sup>2</sup> panel generates 40% more power than 2010 models - and the efficiency race continues. Download [How Much Power Does 1 Square Meter of ...](#)



### [Solar Panel Wattage Calculation: How To Calculate In 2025?](#)

Solar panel wattage calculation represents the maximum electrical power a photovoltaic module can produce under Standard Test Conditions (STC). These standardized conditions include 1,000 watts ...



### [Solar Panel Watts Per Square Meter Explained](#)

Learn how to measure solar panel efficiency using solar panel watts per square meter with this comprehensive guide.

### [Solar Energy Generation Per Square Metre: A Complete Guide](#)

On a clear day, each square metre of the Earth's surface receives approximately 1,000 watts of solar energy, also known as 1 kW/m<sup>2</sup>. This energy can be converted into electricity using ...



### [How many WP per square meter of solar panels , NenPower](#)

Standard solar panels typically yield between 150 to 200 WP per square meter, meaning a standard panel with a size of about 1.7 square meters will generate around 250 to 340 WP.



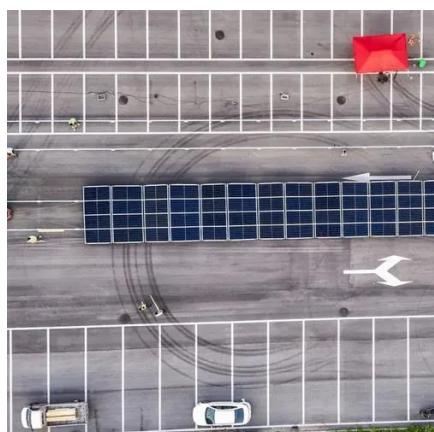
## Solar Panel Output Per Square Meter



Discover how much electricity solar panels generate per square meter, explore efficiency factors, technology comparisons, and future innovations in photovoltaic energy.



2MW / 5MWh  
Customizable



### [Solar Power Per Square Meter Calculator](#)

Calculate solar panel energy output per square meter. Get accurate daily, monthly, and annual production estimates based on location, panel specs, and system losses.

### [Solar Energy Per Square Meter: How Much Power Can You Get?](#)

This article explores solar energy per square meter and the various factors that influence energy output, such as location, climate, and panel efficiency. It provides crucial calculations, ...





## Contact Us

---

For catalog requests, pricing, or partnerships, please visit:

<https://id2market.eu>

Phone: +34 910 56 87 45

Email: [info@id2market.eu](mailto:info@id2market.eu)

Scan the QR code to access our WhatsApp.

