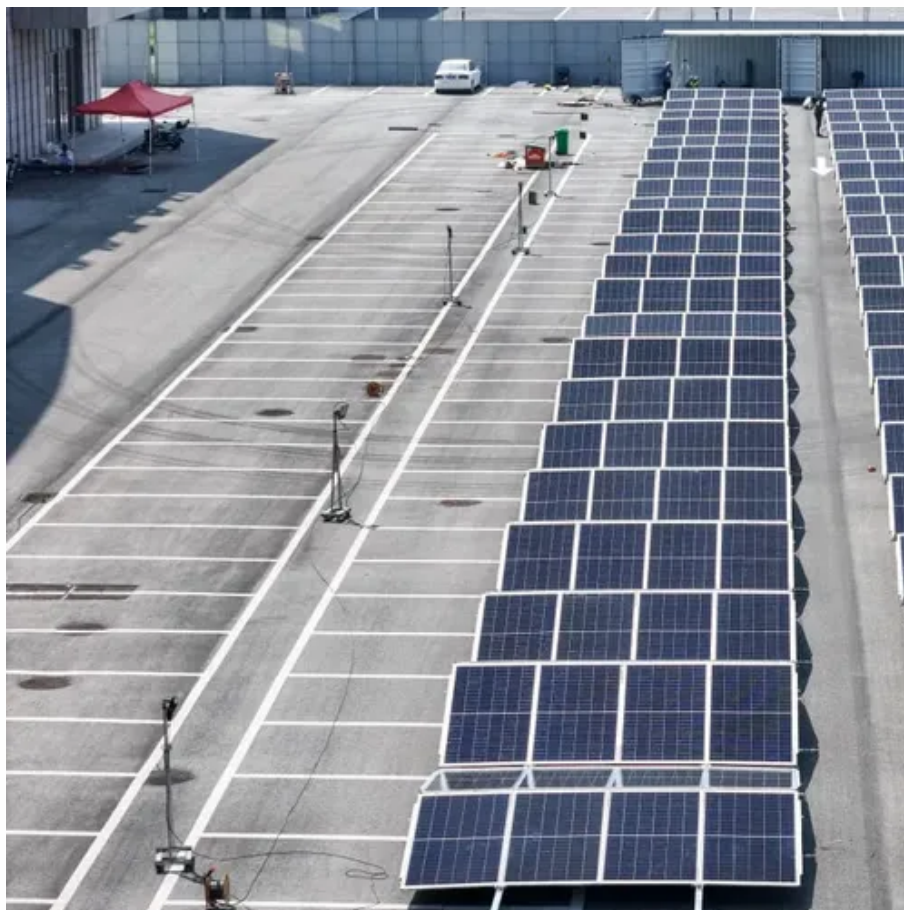




Pure sine wave inverter function





Overview

The main function of a pure sine wave inverter is to convert direct current (DC) from sources like batteries, solar panels, or other DC power supplies into alternating current (AC), which is the standard form of electricity used by most household appliances and electronic devices. The inverter's job is to take the DC power and convert it to an AC power curve. The simplest version just switches on and off. In the realm of renewable energy systems, off-grid power setups, and emergency backup solutions, the pure sine wave inverter stands as a cornerstone component. The key feature of a pure sine wave inverter. Most electronic devices can work without a pure sine wave inverter, but there are some important points to consider before buying one. The two main concerns are efficiency and



Pure sine wave inverter function

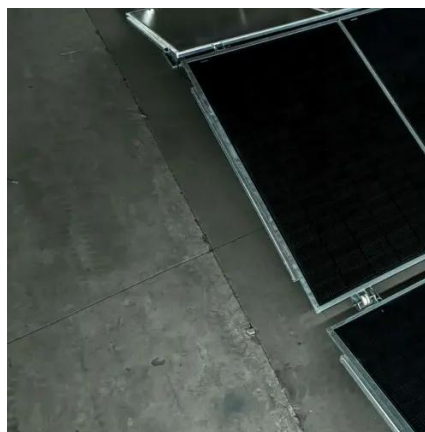


What is a pure sine wave inverter?

A pure sine wave inverter is an electrical device that converts direct current (DC) into alternating current (AC), outputting a pure sine wave.

[Pure Sine Wave Inverters Demystified: Functions, ...](#)

The main function of a pure sine wave inverter is to convert direct ...



[Pure Sine Wave Inverter: All You Need to Know](#)

This is where pure sine wave inverter, also known as true sine wave inverter, comes into play. They are advanced power conversion devices that produce a high-quality AC power output, ...



Pure Sine Wave Inverters Demystified: Functions, Benefits & Top ...

The main function of a pure sine wave inverter is to convert direct current (DC) from sources like batteries, solar panels, or other DC power supplies into alternating current (AC), which is ...



[How Does A Pure Sine Wave Inverter Work?](#)

Modified sine wave inverters use simpler and cheaper electronics to produce a wave that is not quite a smooth sine wave. Pure sine wave inverters use more expensive electronics to ...



Understanding Pure Sine Wave Inverter: Function and Applications

A pure sine wave inverter converts direct current (DC) into alternating current (AC) that closely resembles the smooth, sinusoidal waveform of the electricity supplied by the grid.



[Reliable Pure Sine Wave Inverter Selection](#)

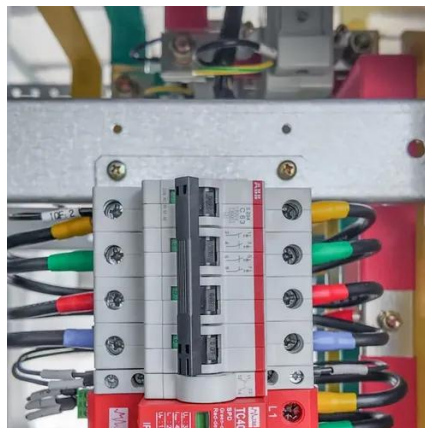
A pure sine wave inverter is a device that converts direct current (DC) electricity from batteries or solar panels into alternating current (AC) electricity that matches what comes from your ...

[Pure Sine Wave Inverters: Necessary or](#)



Overkill?

Pure sine wave inverters deliver "cleaner" A/C power, but they cost a lot more than modified sine wave inverters. GNK82 / E+ / Getty Images. A modified sine wave inverter will work for ...



How Does a Pure Sine Wave Inverter Work? A Comprehensive ...

This article dives deep into the working principle of pure sine wave inverters, unpacking their core components, operational stages, and why they're the gold standard for sensitive electronics.

The Ultimate Guide to Pure Sine Wave Solar Inverters: Everything ...

What is a Pure Sine Wave Solar Inverter? A solar inverter is a device for power conversion, which changes direct current into alternating current. A pure sine wave inverter refers to a high-grade ...



What is a pure sine wave inverter?

A pure sine wave inverter transforms direct current (DC) into usable alternating current (AC), which has a smooth and constant voltage. They precisely replicate the form of the AC ...



Contact Us

For catalog requests, pricing, or partnerships, please visit:

<https://id2market.eu>

Phone: +34 910 56 87 45

Email: info@id2market.eu

Scan the QR code to access our WhatsApp.

