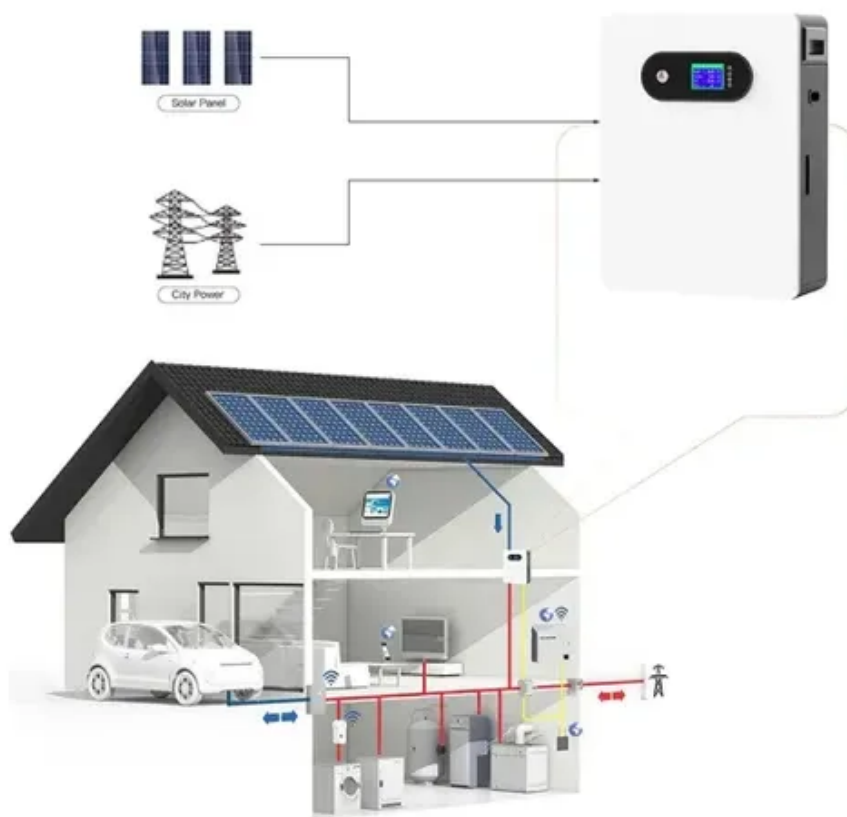




Relationship between inverter and grid-connected box





Relationship between inverter and grid-connected box



[Operating Principles of Grid-Connected Inverters](#)

Power Transmission and Interaction: The primary function of a grid-connected inverter is to convert DC to AC and connect to the grid, enabling power transmission. It can feed the electricity generated by ...

How Does a Solar Inverter Synchronize with Grid? Tips Inside

Grid synchronization is the process that allows your solar inverter to match its output with the power coming from the utility grid. It's how your solar system "speaks the same language" as the ...



[Solar Integration: Inverters and Grid Services Basics](#)

As more solar systems are added to the grid, more inverters are being connected to the grid than ever before. Inverter-based generation can produce energy at any frequency and does not have the same ...



A Review of Grid-Connected Inverters and Control Methods Under

Grid-connected inverters play a pivotal role in integrating renewable energy sources into modern power systems. However, the presence of unbalanced grid conditions poses significant challenges to the ...



A Gray-Box Stability Analysis Method of Grid-Connected Inverter

Grid-connected inverters (GCIs) are commonly used with renewable energy resources, power transmission systems to transmit power into the utility grid [1, 2]. The ever-increasing ...

What Is The Difference Between Grid-Tied And Grid Interactive Inverters?

Grid interactive inverters, also known as hybrid inverters, are advanced devices designed to operate seamlessly in both grid-connected and stand-alone modes. This versatility allows users to ...



Hybrid Inverters Redefine the Relationship Between the Inverter and ...

This article explores how hybrid inverters are transforming the relationship between inverters and the grid, emphasizing their unique advantages and their critical role in reshaping ...



[Introduction to Grid Forming Inverters](#)



Why do we need Grid-forming (GFM) Inverters in the Bulk Power System? There is a rapid increase in the amount of inverter-based resources (IBRs) on the grid from Solar PV, Wind, and Batteries.



A comprehensive review of grid-connected inverter topologies and

This comprehensive review examines grid-connected inverter technologies from 2020 to 2025, revealing critical insights that fundamentally challenge industry assumptions about ...

[How Solar Inverter is Connected to the Grid](#)

Synchronous inverters only operate with the grid and so are also called "grid-following" inverters. For safety reasons, they turn off when the grid goes down to prevent electricity from





Contact Us

For catalog requests, pricing, or partnerships, please visit:

<https://id2market.eu>

Phone: +34 910 56 87 45

Email: info@id2market.eu

Scan the QR code to access our WhatsApp.

