



Replace the base station module power supply





Overview

Shop now for fast shipping and easy returns!. Shop now for fast shipping and easy returns!. When the voltage at the emitter of Q4 causes VR3 to conduct the resulting voltage at the junction of R8 and RIO will turn on Q6. The current through Q6 will turn on Q5 and Q5 will turn on Q4, thereby energizing K801. Once the circuit is activated C801/C805 will be locked into the resonating circuit. Before installing the A-B station module, select an appropriate power supply. See the Allen-Bradley Automation Products Catalog, publication AP-100, for backplane current requirements of any A-B product you are using. Supply connections must be made water and weatherproof against the weather conditions encountered at the installation location. Featuring housing for Motorola, Kenwood, Vertex, ICOM, Harris, and others, these cabinets are sized to accept your choice of radio and Samlex. How to Set Up a Replacement Base Station | SimpliSafe Support Home There may be a point where you will need to transfer your system and service to a new or different Base Station, such as replacing a faulty Base Station or transferring to a new Base Station when you move. In Stock, Ready to Ship! In Stock, Ready to Ship! In Stock, Ready to Ship! In Stock, Ready to Ship! .



Replace the base station module power supply



LBI-38550A

The power supply is normally installed in an EIA 19 inch wide rack of a MII base station cabinet. It can also be installed in a 19 inch wide stand alone open rack.

?How to Set Up a Replacement Base Station , SimpliSafe Support Home

To do this, remove the power cable from the bottom of the Base Station, then use your own Phillips head screwdriver to remove the screw from the base. Twist the bottom of the Base Station off to reveal the ...



Base Station Power Supply

Explore a wide range of our Base Station Power Supply selection. Find top brands, exclusive offers, and unbeatable prices on eBay. Shop now for fast shipping and easy returns!

[Power Supplies for Two-Way Radio Base Station installations](#)

Power Supplies for Two-Way Radio Base Station installations. In Stock, Ready to Ship!

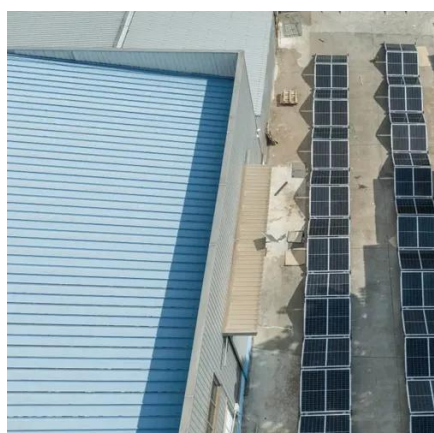


[Free Shipping on Most Orders Over \\$99 at DX Engineering](#)

Find Parts and Accessories Base station power module power supply KEYWORD and get Free Shipping on Most Orders Over \$99 at DX Engineering!

MASTR III Base Station

This manual (LBI-38775) contains information for the MASTR III Base Station, including application information, cable diagrams and parts list for the cabinet hardware.



[LBI-4806E Mastr II Base Station 60Hz Power Supply](#)

Remove P802 from power cable W801 and replace with the proper plug to mate with the 242 VAC receptacle. Remove V16--R wire connected between A801-J1-3 and A801-S1-2.

[1785-2.37, A-B Station Module.](#)



[Installation Instructions](#)

Before installing the A-B station module, select an appropriate power supply. See the Allen-Bradley Automation Products Catalog, publication AP-100, for backplane current requirements of any A-B ...



[Installation Manual for the BS4 Basestation](#)

The base station uses a NiMh battery pack to maintain operation during short term power loss. Only replace this pack with the same Telensa type replacement battery pack.

[How to Repair your Base Station Internal Power Supply](#)

How to repair a broken Apple Airport Base Station or Lucent Access Point. Failures occur due to bad capacitor choices and overheating.





Contact Us

For catalog requests, pricing, or partnerships, please visit:

<https://id2market.eu>

Phone: +34 910 56 87 45

Email: info@id2market.eu

Scan the QR code to access our WhatsApp.

