



Replace the communication base station battery time





Overview

Once installed in communication base stations, these batteries typically do not require replacement for several years. Therefore, it is crucial to enhance battery maintenance to improve its operational conditions, which in turn can effectively extend the battery's. These factors collectively make communication batteries for base stations a highly specialized and mission-critical component. 1 Long Standby. With the mission of being the “Zero-Downtime Guardian,” ONESUN introduces a backup battery solution specifically designed for the telecommunications industry. They ensure uninterrupted connectivity during grid failures by storing energy and discharging it when needed.



Replace the communication base station battery time



[Main Causes of Shortened Battery Lifespan in Base Stations](#)

Once installed in communication base stations, these batteries typically do not require replacement for several years. Therefore, it is crucial to enhance battery maintenance to improve its ...

The Reason for Shortening the Service Life of Base Station Batteries

Once these batteries are installed and put into operation in a communication base station, they will not be replaced within a few years. Therefore, it is of great significance to strengthen the maintenance of ...



Communication Batteries: Why Telecom Base Stations Have Unique ...

The phrase "communication batteries" is often applied broadly, sometimes including handheld radios, emergency devices, or general-purpose backup batteries. In practice, when ...

Telecom Base Station Backup Power Solution: Design Guide for 48V ...

Long Cycle Life LiFePO4 batteries can achieve over 2,000 cycles, and in some cases up to 5,000 cycles, far surpassing the 300-500 cycles of lead-acid batteries. This translates to lower ...



Understanding Backup Battery Requirements for Telecom Base Stations

Telecom base stations require reliable backup power to ensure uninterrupted communication services. Selecting the right backup battery is crucial for network stability and efficiency.

Telecom Backup Battery Upgrade: ONESUN's Zero-Downtime Power ...

If you want your base stations and communication equipment to operate smoothly despite outages, load fluctuations, or harsh environments, this solution is worth serious consideration.



How often should a communication base station replace its power ...

In this article, the schedulable capacity of the battery at each time is determined according to the dynamic communication flow, and the scheduling strategy of the standby power considering the ...



[What Powers Telecom Base Stations](#)



During Outages?

They maintain voltage stability through rectifiers and DC plants, enabling base stations to function for 4-48 hours during blackouts. Redundant battery banks and load-shedding protocols ...

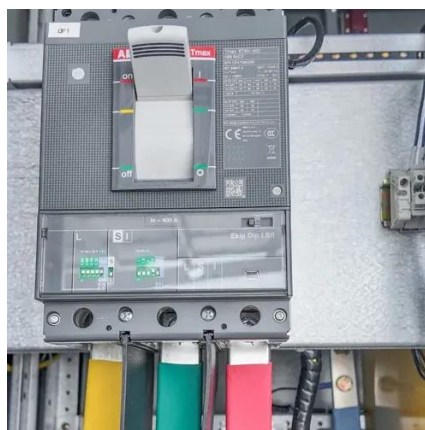


Telecom Battery Backup Systems, Backup Power For Telecom ...

In this application scenario of base station battery expansion, lead-acid batteries are gradually replaced by lithium iron phosphate batteries in terms of use cost and performance. This shift has led to the ...

Communication Base Station Backup Battery

High-capacity energy storage solutions, specifically designed for communication base stations and weather stations, with strong weather resistance to ensure continuous operation of equipment in ...





Contact Us

For catalog requests, pricing, or partnerships, please visit:

<https://id2market.eu>

Phone: +34 910 56 87 45

Email: info@id2market.eu

Scan the QR code to access our WhatsApp.

