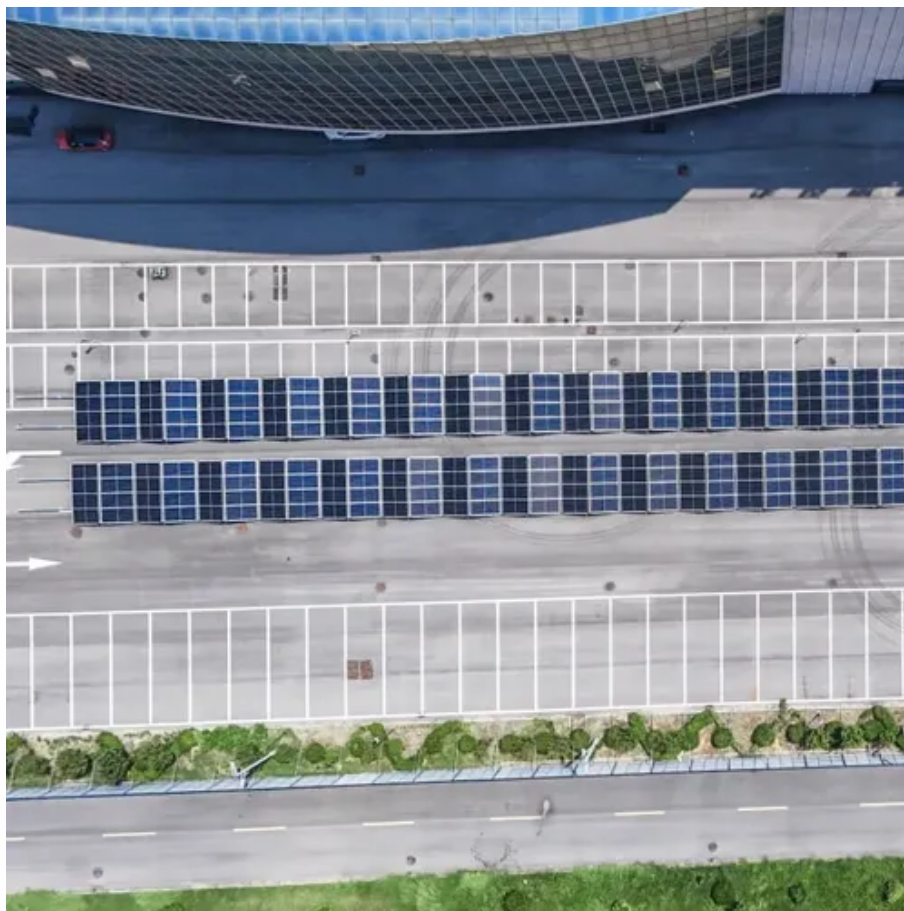




Required wind speed for wind turbine generator set





Overview

Cut-in speed: The minimum wind speed—usually 6 to 9 mph (2.5 to 4 m/s)—needed to start generating power. **Rated speed:** The wind speed—typically between 25 to 35 mph (11 to 16 m/s)—where the turbine reaches its. In this guide, we dive deep into five essential wind speed facts that affect wind turbine performance, output, and system viability. Department of Energy, NREL, and other trusted resources, this comprehensive guide will help you understand how wind behaves, how to. To operate a wind turbine effectively, aim for wind speeds of 7 to 9 mph for power production. For peak efficiency, target speeds between 25 to 55 mph before safety measures engage to shut down the turbine.



Required wind speed for wind turbine generator set

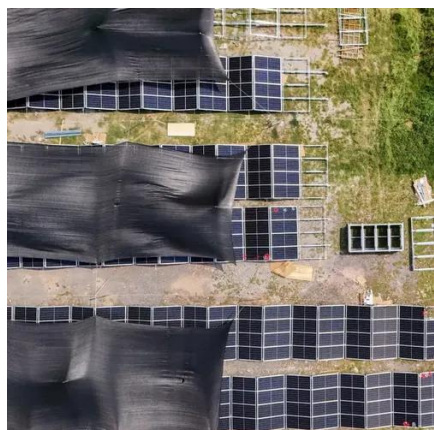


[Consumer Guide to Small Wind Energy Systems](#)

Site should maintain an average annual wind speed of at least 9 miles per hour (MPH) (or 4 meters per second) at hub height--the distance from the ground to the rotor hub of the unit. Purchasing and ...

[What Is The Average Wind Speed Needed For A Turbine](#)

Conventional turbines need wind speeds of around 10 miles (15 kilometers) per hour to start generating. The cut-in speed of a wind turbine is defined as the minimal wind velocity. The ...



Optimal wind speeds for turbine efficiency , Business Norway

Wind speeds between 3.5 and 4 metres per second are regarded as suitable for small wind turbines, whereas wind speeds between 5.8 and 8 metres per second are considered suitable ...

Full analysis of the conditions required for wind turbine full power

However, in order to achieve full power generation, the wind speed needs to reach or exceed the rated wind speed of the wind turbine (also known as rated wind speed or full power wind ...



What Is the Minimum and Maximum Wind Speed for Operating a ...

To maximize performance, wind turbines require specific wind speeds to efficiently generate electricity. The minimum wind speed needed for a wind turbine to start producing power is ...

[Required wind speed for wind turbine generator set](#)

Because the generator must rotate at a speed that matches the frequency of the electric network (50 or 60 Hz in most countries), it must be turned at 1500 RPM for 50 Hz and 1800 RPM for The wind ...



How Much Wind Does a Turbine Need? 5 Facts Before You Install

To operate efficiently and safely, every wind turbine is designed to function within a specific range of wind speeds: Cut-in speed: The minimum wind speed--usually 6 to 9 mph (2.5 to 4 ...



[WIND FREQUENTLY ASKED QUESTIONS](#)



(V10.09)

Utility-scale wind power plants require minimum average wind speeds of 6 m/s (13 mph). The power available in the wind is proportional to the cube of its speed, which means that doubling the wind ...



How Much Wind Does a Wind Generator Need to Work Efficiently?

In this article, we explain the four key wind speed levels that determine when a wind turbine starts working, produces full power, stops, and how much wind it can survive.

What Wind Speeds are Needed for Home Wind Turbines?

Most home wind turbines need a minimum wind speed of 6 to 9 mph to begin generating power. For consistent energy production, average wind speeds of 10-12 mph are ideal.





Contact Us

For catalog requests, pricing, or partnerships, please visit:

<https://id2market.eu>

Phone: +34 910 56 87 45

Email: info@id2market.eu

Scan the QR code to access our WhatsApp.

