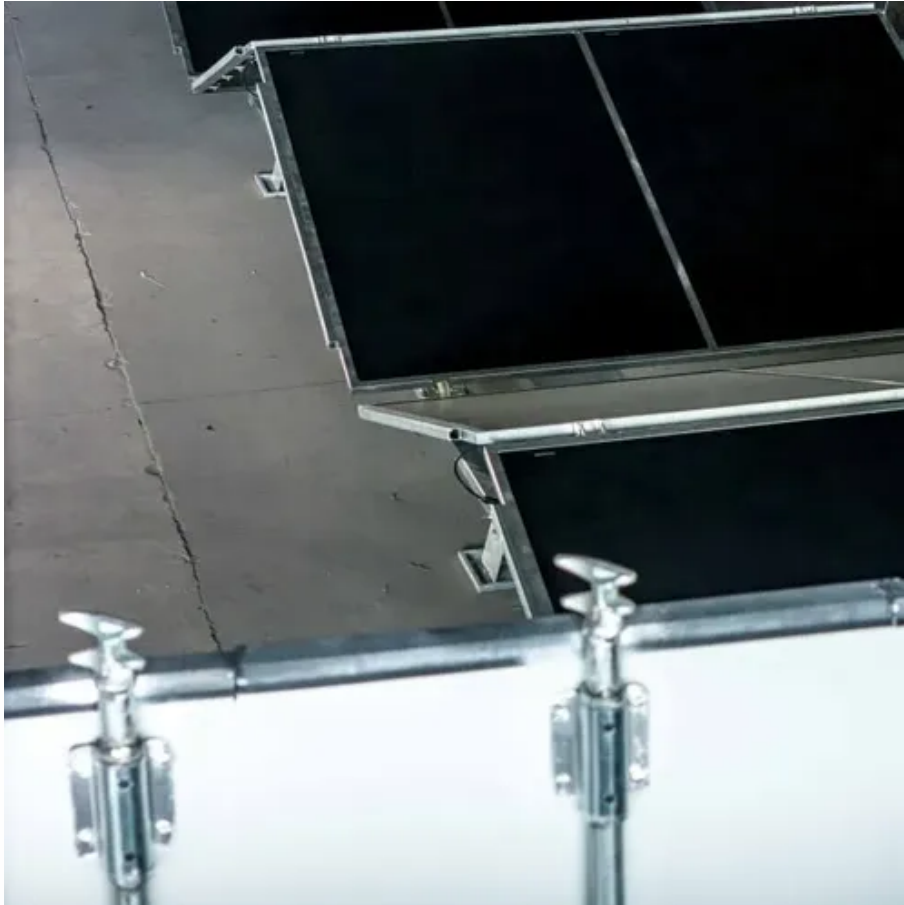




Rome Communication Base Station Energy Management System Cost Price





Overview

Core energy consumption comes from the main equipment (RRU/BBU), air conditioning, and power supply systems (switching power supplies and batteries). Energy costs account for 40%-60% of a base station's total operating costs. Intelligent communication energy system can support data information exchange and sharing in any scenario (indoor, outdoor), providing power energy solutions for base stations and communication equipment. Communication iron tower system is an important part of communication infrastructure. The energy solution for Telecom Base Station combines renewable energy, energy storage systems and intelligent energy management technology to meet the base station's demand for continuous power supply and ensure the stable, efficient and environmentally friendly operation of communication. For base stations located in deserts or other extreme environments, independent power supply is essential, as these areas are not only beyond the reach of power grids but also unsuitable for fuel generators due to the lack of on-site personnel for maintenance. What are some key parameters of energy storage systems?

Rated power is the total possible instantaneous discharge capacity. The one-stop energy storage system for communication base stations is specially designed for base station energy storage.



Rome Communication Base Station Energy Management System Cost



Energy Storage for Communication Base

Our energy storage solution is flexible in design and can be seamlessly integrated with various existing base station power systems. The modular design can better adapt to different types of base stations, ...

Telecom Base Station Energy Management

Monitor the electrical parameters of AC and DC distribution system of Telecom base station in real time, provide online monitoring and energy consumption analysis of operation status, improve the ...



Telecom Battery Backup Systems, Backup Power For Telecom ...

In this application scenario of base station battery expansion, lead-acid batteries are gradually replaced by lithium iron phosphate batteries in terms of use cost and performance. This shift has led to the ...

Energy Solution for Telecom Base Station - Corey

Battery Energy Storage System (BESS): Use high-performance lithium batteries or other types of energy storage devices to store excess power to ensure continuous power supply even when there is no ...



Mobile Communication Base Stations

Core energy consumption comes from the main equipment (RRU/BBU), air conditioning, and power supply systems (switching power supplies and batteries). Energy costs account for 40%-60% of a ...

Base Station Energy Storage - leaptrend

Whether it is a base station in a remote area or a communication node in the city center, Base Station Energy Storage can provide you with reliable power guarantee, making your business operations ...



Rome communication base station flow battery price

Communication Base Station Li-ion Battery Market Spot prices for LFP cells reached \$97/kWh in 2023, a 13% year-on-year decline, while installation costs for base station battery systems fell below ...



Energy Storage for Communication Base



The one-stop energy storage system for communication base stations is specially designed for base station energy storage. Users can use the energy storage system to discharge during load peak ...



Communication Base Station Energy Solutions

The system operates reliably in unattended conditions, providing a simple maintenance process and long-term cost savings while ensuring stable communication service around the clock.



Powering The Future Energy Storage Solutions for ...

The one-stop energy storage system for communication base stations is specially designed for base station energy storage.





Contact Us

For catalog requests, pricing, or partnerships, please visit:

<https://id2market.eu>

Phone: +34 910 56 87 45

Email: info@id2market.eu

Scan the QR code to access our WhatsApp.

