



Singapore demand response





Singapore demand response



Demand Side Management Sandbox

The DSM Sandbox enhances the Demand Response (DR) and Interruptible Load (IL) programmes in the Singapore Wholesale Electricity Market and incentivises companies to reduce their electricity ...

SG Press Centre

1. EMA will introduce three new initiatives to better harness "demand flexibility" -- the ability of consumers to adjust electricity consumption in response to the needs of the power system. ...



New Residential Demand Response Pilot to Empower Households to ...

Targeted to be launched by second half of 2024, this pilot is the first-of-its-kind in Singapore to call upon households to make a significant difference for a more resilient and sustainable energy future.

Non-Residential Consumers , EMA

In a Demand Response (DR) programme, eligible business consumers will voluntarily reduce their electricity usage when wholesale electricity prices are high. In return, they receive a share of the ...



New Initiatives to Harness Demand Flexibility Potential in Singapore

These initiatives focus on enhancing the Demand Response (DR) programme and enable Battery Energy Storage Systems (BESS) and electric vehicle (EV) charging stations to participate in ...

Demand Response , DSMsync

DSMsync enables businesses to participate in the Demand Response & Interruptible Load Programs in Singapore



About 1 in 2 households in EMA pilot cut energy usage in September ...

According to EMA, the national grid's peak demand is predicted to rise every year over the next five years, and demand response programmes will help keep the grid running smoothly and ...



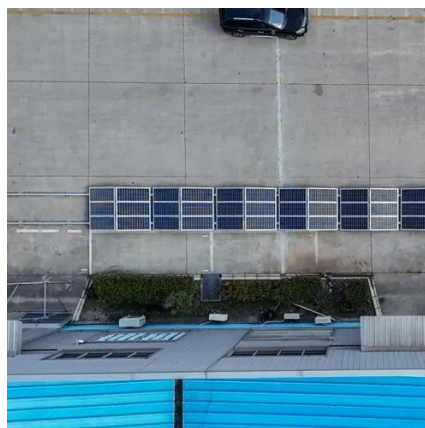
 LFP 48V 100Ah

Residents to be rewarded for cutting



electricity usage during peak

SINGAPORE - In a first-of-its-kind initiative to get households to help manage the load on the electricity grid, residents in homes equipped with smart meters will be called upon to adjust ...



[Singapore is Unlocking Demand Response for Big Energy Users](#)

The Energy Market Authority and SP Group are set to launch Singapore's inaugural Residential Demand Response (R-DR) pilot programme in the latter half of 2024.

Interruptible Load Program

Singapore's Demand Response program is called Interruptible Load (IL), and was introduced by the Energy Market Authority (EMA) to allow Virtual Power Plants (VPPs) to offer Demand Response to ...





Contact Us

For catalog requests, pricing, or partnerships, please visit:

<https://id2market.eu>

Phone: +34 910 56 87 45

Email: info@id2market.eu

Scan the QR code to access our WhatsApp.

