



Single-blade wind turbine generator structure





Overview

This concept uses a single blade with a self-adjusting blade angle of attack and includes multiple degrees of freedom in the blade and body which reduce the stresses and extend the wind turbine's life. In this article, we bring the reader along on a tour of an individual large modern wind turbine up close, introducing the key components that allow it to harness the wind's energy and convert it into mechanical energy. For years, the wind energy industry has adopted the three-blade model for its turbines. Wind turbines have in general 3 blades. Due to the size of emergent. Wind turbines harness the wind—a clean, free, and widely available renewable energy source—to generate electric power.



Single-blade wind turbine generator structure



[A Single Blade Wind Turbine!](#) [SP_Energia_Prototype.](#)

In the field of renewable energy, wind is one of the most valuable resource. Hence tapping this resource can help to a great extent to level the spike of carbon emissions.

Horizontal-Axis Wind Turbine (HAWT) Working Principle , Single ...

Horizontal-Axis Wind Turbine Working Principle Controlling The Output Frequency of Wind Turbine HAWT Towers Comparison of Wind Turbine Blade Types The horizontal-axis wind turbine (HAWT) is a wind turbine in which the main rotor shaft is pointed in the direction of the wind to extract power. The principal components of a basic HAWT are shown in Figure 1. The rotor receives energy from the wind and produces a torque on a low-speed shaft. The low-speed shaft transfers the energy to a ... See more on electricalacademia researchgate



Single-Blade Wind Turbine. , Download Scientific Diagram

Analysis of difficulties and issues related to the design, construction, transportation, installation and operation of two single-blade wind turbines type as part of a ...

How a Wind Turbine Works

Made from tubular steel, the tower supports the structure of the turbine. Towers usually come in three sections and are assembled on-site. Because wind speed increases with height, taller towers

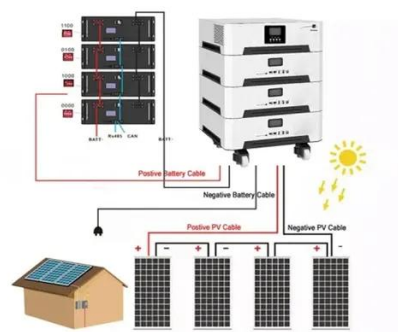


enable ...



[Single-Blade Wind Turbine. , Download Scientific Diagram](#)

Analysis of difficulties and issues related to the design, construction, transportation, installation and operation of two single-blade wind turbines type as part of a hybrid project to



Wind Turbine Blade Design

The geometry for the wind turbine blade was created within SolidWorks. As we wished to work with ANSYS shell elements for computational efficiency, the SolidWorks model (consisting of 3 parts - top ...

Hegna-P4

This concept uses a single blade with a self-adjusting blade angle of attack and includes multiple degrees of freedom in the blade and body which reduce the stresses and extend the wind turbine's life.

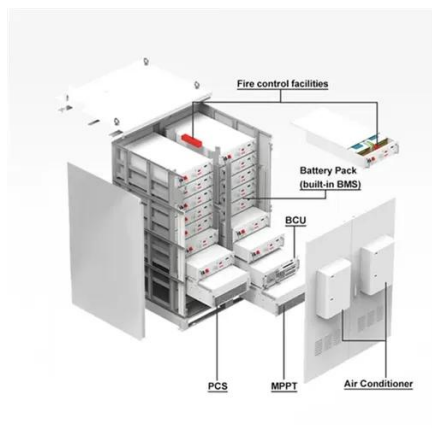


Comparative analysis of carbon fibre



and glass fibre in blade design

This study investigates the performance, environmental impact, and economic viability of single-blade carbon fibre wind turbines compared to traditional three-blade glass fibre designs.



Single-blade wind turbine works at wind speeds of 157 mph

Touchwind's single-blade design solves both these issues in one stroke. How does a single-blade turbine work? The blade is attached to the mast at a slight upward angle. When the wind



Article 5: The Single Wind Turbine: From the Wind to the Blades

We begin by noting the size of the turbine and the layout of the wind farm in which it is located. We then explain why a turbine looks as it does today: why it has three blades, why the blades taper and twist, ...

Horizontal-Axis Wind Turbine (HAWT) Working Principle , Single Blade

The article provides an overview of horizontal-axis wind turbine (HAWT), covering their working principles, components, and control methods. It also explores different blade configurations and ...



Wind Turbine Blade Design



Abstract: A detailed review of the current state-of-art for wind turbine blade design is presented, including theoretical maximum efficiency, propulsion, practical efficiency, HAWT blade design, and ...





Contact Us

For catalog requests, pricing, or partnerships, please visit:

<https://id2market.eu>

Phone: +34 910 56 87 45

Email: info@id2market.eu

Scan the QR code to access our WhatsApp.

