



Single crystal photovoltaic panel 540w size





Overview

To give you an idea, a standard 540 watt solar panel is approximately 88 x 46 inches and tips the scales at around 72 pounds. Take control of your energy costs with our high-efficiency 540W monocrystalline solar panel. 05A, this panel is designed to deliver reliable power for your home or business. Bifacial Half-Cut Module: Advanced processing techniques realize. Bluebird Solar manufactures cutting-edge technology-based 540 Watt Solar Panels, delivering exceptional performance and efficiency. Our 540-watt 24V solar PV module includes an IP 65 back side junction. Note: Your Enquiry will be sent directly to TN Solar Co. Detailed profile including pictures, certification details and manufacturer PDF . That's 358 ft² (17.9 ft² × 20 modules = 358 ft²). A PV module from ZNShine needs about 28 ft² of space, and you need only 11 of them to build a 6 kW system.



Single crystal photovoltaic panel 540w size

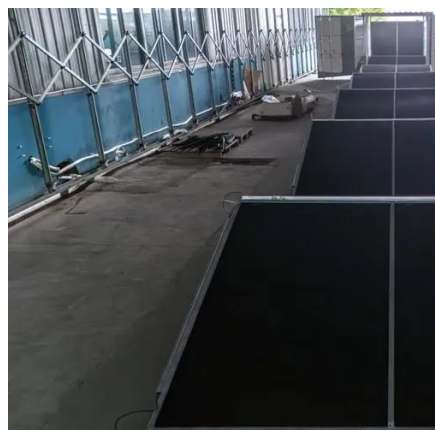


High Efficiency Half-Cut 540W 550W 560W Mono PERC Solar Module

HiMAX6 solar panels integrate large 210mm half-cut cells with Mono PERC technology, delivering a high power output ranging from 575W to 605W, and achieving power efficiency up to 21.65%.

SolarParts , Mono 540W , Solar Panel Datasheet , ENF Panel ...

Detailed profile including pictures, certification details and manufacturer PDF.



Perc 550W 540W single glass / Dual glass bifacial mono solar module

Mogen Solar MG10 Perc monocrystalline single glass 540-555Watt photovoltaic solar panel. The new series integrates 182mm silicon wafers, with perc, multi-busbar cell technology and high-density ...

[Bluebird 540 Watt Half Cut Solar Panels](#)

A 540W Half-Cut Solar Panel refers to a photovoltaic panel that has a power output of 540 watts and employs a "half-cut" cell design. In a half-cut design, the solar cells on the panel are divided into two ...



540 Watt Solar Panels

To give you an idea, a standard 540 watt solar panel is approximately 88 x 46 inches and tips the scales at around 72 pounds. Most modules with this output rating are monocrystalline and ...



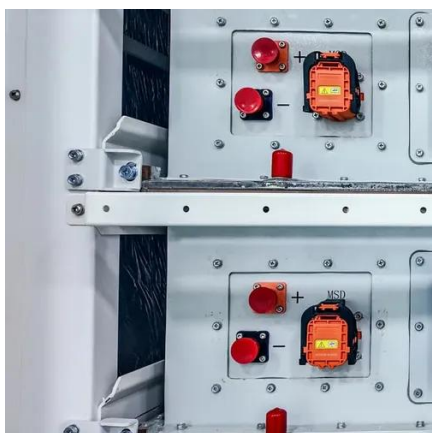
540W Bifacial Mono PERC Solar Panel

Take control of your energy costs with our high-efficiency 540W monocrystalline solar panel. With a rated voltage of 41.39V and a rated current of 13.05A, this panel is designed to deliver reliable power ...



[580W Monocrystalline PV Module Solar Panel 540w 560w](#)

Monocrystalline PV modules with power ratings of 540W to 560W are high-efficiency solar panels made from single-crystal silicon.



Seraphim 540W Panel, mono perc



The SRP-540-BMA-HV is a cutting-edge 540W solar panel engineered for commercial and utility-scale solar installations. Utilising high-efficiency monocrystalline PERC technology and a robust 182 mm ...



Monocrystalline Solar Panel 540 WP

The 540 watt solar panel is one of the best-rated solar panels, with high-quality 'A' grade solar cells and ultra-clear tempered glasses that are not easily broken. It can work effectively even in low light and ...

[Mono-Perc-Halfcut Solar Panel , 24V Capacity , 540 Wp Power](#)

Livguard Solar Panels are Polycrystalline/mono perc PV panels, IEC compliant having range from 40 W - 325 W. Our Panels are ideally suited for rooftop and agricultural applications.





Contact Us

For catalog requests, pricing, or partnerships, please visit:

<https://id2market.eu>

Phone: +34 910 56 87 45

Email: info@id2market.eu

Scan the QR code to access our WhatsApp.

