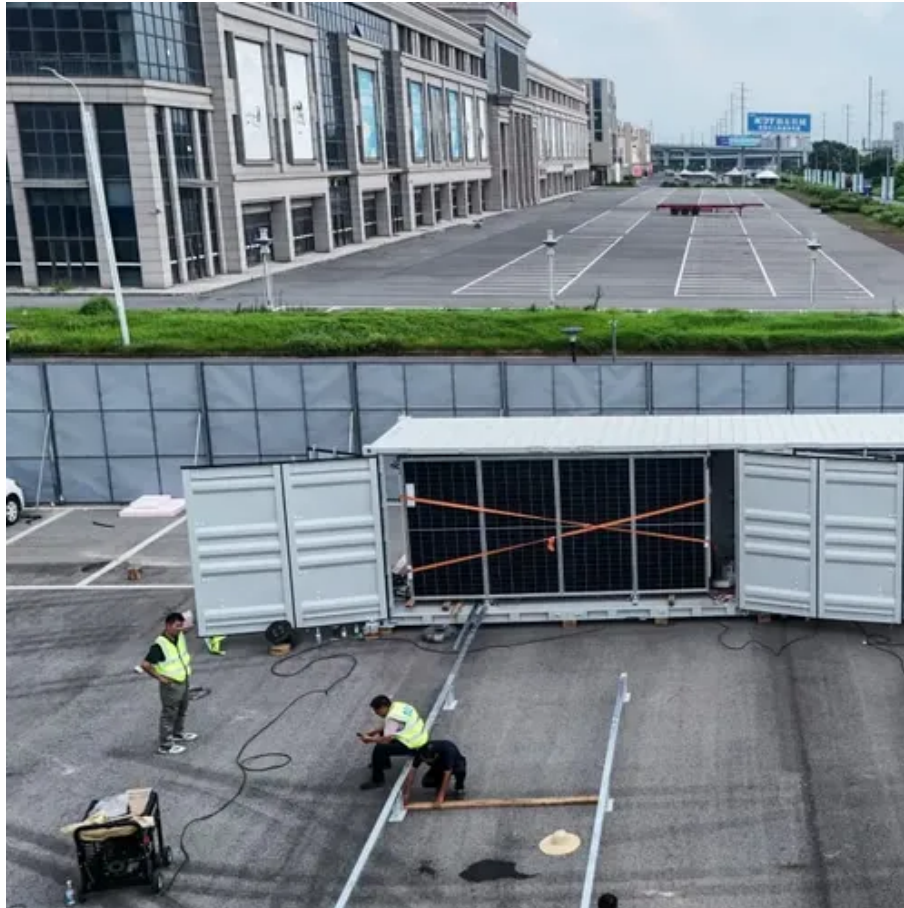




Single wind turbine generator debugging





Single wind turbine generator debugging



Wind turbine generator failure analysis and fault diagnosis: A ...

Then the fault characteristics and diagnostic processes of generators are investigated, and the principles and processes of fault diagnosis are discussed. Finally, the application of four ...

Wind turbine generator failure analysis and fault diagnosis: A ...

Finally, the application of four categories of model-based, signal-based, data-driven and hybrid approaches to wind turbine generator fault diagnosis is summarized. The comprehensive ...



Wind turbine fault detection and identification using a two-tier

A proactive approach is essential to optimize wind turbine maintenance and minimize downtime. By utilizing advanced data analysis techniques on the ex...

Wireless joint debugging and testing system of wind turbine generator

A technology for wind turbines and test systems, which is applied in wind turbine test runs, wind power generation, etc., can solve problems such as shape and design restrictions, waste, ...



Fault diagnosis for wind turbine generators based on Model ...

When dealing with a limited number of fault samples, prevailing fault diagnosis methods often succumb to overfitting, impeding the attainment of precise fault diagnosis. Hence, this work ...

Proactive fault detection in wind turbine generators using SCADA

Predictive maintenance is essential in the wind energy sector due to the high costs and complexity of maintaining wind turbines operating in remote and harsh environments. This paper ...



Wind turbine generator failure analysis and fault diagnosis: A ...

The comprehensive review shows that the hybrid approach is now the leading and most accurate tool for real-time fault diagnosis for wind turbine generators.

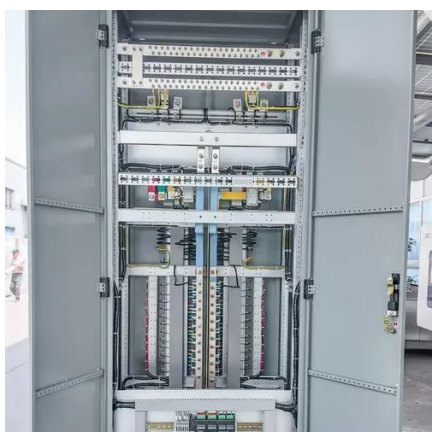


Fault Diagnosis of Wind Turbine



Generators Based on Stacking

Fault alarm time lag is one of the difficulties in fault diagnosis of wind turbine generators (WTGs), and the existing methods are insufficient to achieve accurate and rapid fault diagnosis of ...



Management of power in single rotor wind turbine systems ...

Solving the problem of power ripples for a multi-rotor wind turbine system using fractional-order third-order sliding mode algorithms

Fault detection in wind turbine generators using a meta-learning ...

Conventional fault detection methods for wind turbine (WT) generators often grapple with inadequate warning times and poor portability. These issues contribute to heightened safety risks ...





Contact Us

For catalog requests, pricing, or partnerships, please visit:

<https://id2market.eu>

Phone: +34 910 56 87 45

Email: info@id2market.eu

Scan the QR code to access our WhatsApp.

