



Size of a solar panel in a power plant





Size of a solar panel in a power plant

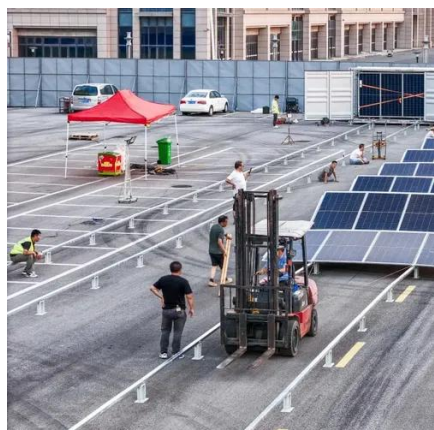


Understanding Solar Panel Dimensions In 2025: A Complete Size Guide

Understanding solar panel dimensions is crucial for planning your solar system installation, maximizing efficiency, and ensuring compatibility with your available space. In this blog, ...

[How to Size a Solar System \[Step-by-Step Guide\]](#)

Once you have your final array size, simply divide by the wattage of your desired solar panels to figure out how many panels you need. Using our example of a 7.2 kW (7,200-watt) array for 100% offset, ...



[Solar Panel Sizes, Dimensions & Wattage for ...](#)

Find the ideal solar panel size and wattage for your business--maximize efficiency and space with our easy size guide.

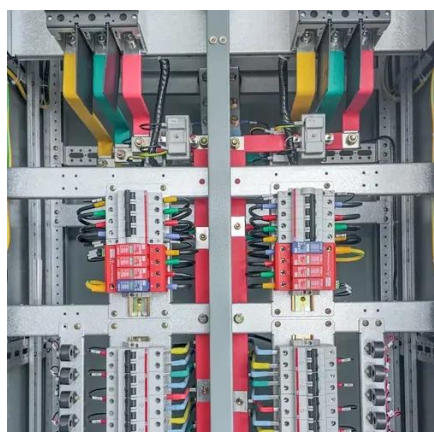
[Design and Sizing of Solar Photovoltaic Systems](#)

Solar panels typically carry warranties of 20 years or more. Scalable and modular- Solar power products can be deployed in many sizes and configurations and can be installed on a building roof or acres of ...



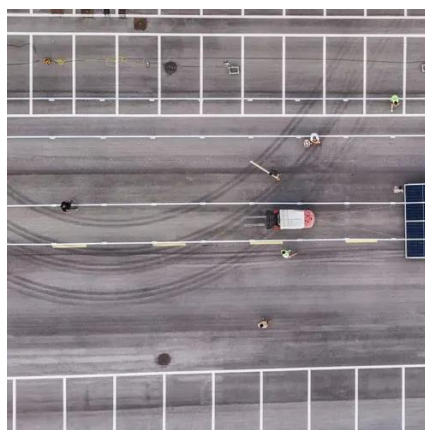
[How to Size a Solar System \[Step-by-Step Guide\]](#)

Solar panel production is measured in watts (W), indicating the ...



[Solar Panel Size & Dimensions Guide 2025 . Complete Specs](#)

Complete guide to solar panel sizes and dimensions. Compare 60-cell vs 72-cell panels, weights, roof space requirements, and installation specs for 2025.



[Solar Panel Sizes and Wattage Explained](#)

To calculate the required system size, multiply the number of panels by the output. For example, a 6.6 kW solar system typically consists of 20 panels each delivering 330W of power. Solar ...



Solar Panel System Sizing for



Commercial and Industrial Applications

At MGetEnergy, we emphasize the importance of thorough planning when it comes to sizing a solar panel system. Proper sizing is essential to ensure the system meets your energy ...

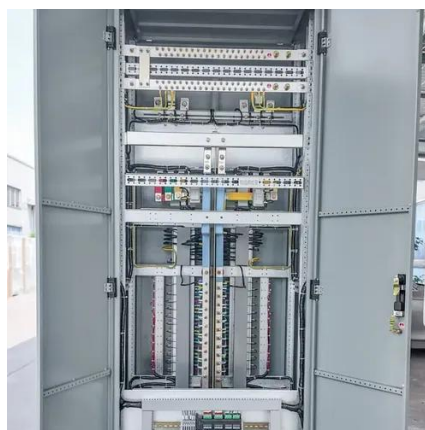


Standard Solar Panel Sizes And Wattages (100W-500W Dimensions)

The goal here is to get to the average solar panel size by wattage. You can find typical dimensions of 100W, 150W, 170W, 200W, 200W, 220W, 300W, 350W, 400W, and 500W solar panels summarized ...

[Understanding Solar Panel Sizes and Production](#)

Solar panel production is measured in watts (W), indicating the panel's capacity to generate power under ideal conditions. This capacity, known as wattage, varies with size, ...



Solar Panel Sizes: Choosing the Right Dimensions for Any Project

Choosing the right solar panel size can make or break your system's performance. In this guide, we break down how to match your energy needs, roof space, and budget with the ideal panel ...



Contact Us

For catalog requests, pricing, or partnerships, please visit:

<https://id2market.eu>

Phone: +34 910 56 87 45

Email: info@id2market.eu

Scan the QR code to access our WhatsApp.

