



Small wind turbines don't turn when the wind is too weak





Overview

A non-spinning turbine is often the first sign of trouble. Here's what to check: Wind Conditions: Is there sufficient wind?

Turbines have a cut-in speed – the minimum wind speed required for rotation. Obstructions: Ensure the blades. Wind turbines stop turning for various reasons, including mechanical maintenance, insufficient wind, or excessive wind. Dispersed and unpredictable Earth's wind patterns are the hallmarks of wind patterns, and there is no way to control the amount of energy in the wind. Wind speed is sometimes. A lack of wind is one of the reasons why you see wind turbines in wind farms stopped, but it is not the only reason. We will explain everything you should know.



Small wind turbines don't turn when the wind is too weak

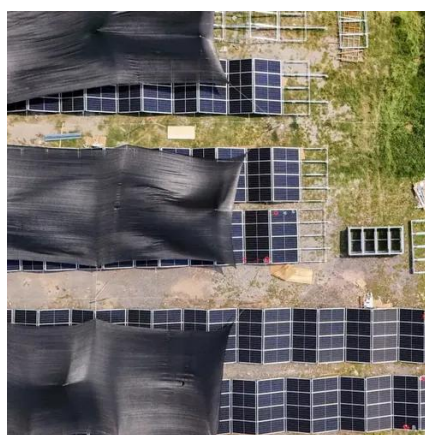


[Failure manifestations and causes of small wind turbines](#)

However, during operation, small wind turbines may experience some unexpected faults such as severe vibrations, abnormal noises, or steering failures. This article explores common fault ...

Preventing Wind Turbines Stop Turning: Reliability Strategies

This article will deeply analyze the various reasons why wind turbines stop turning, helping readers to fully understand the causes and countermeasures of wind turbine failures.



- LIQUID/AIR COOLING
- PROTECTION IP54/IP55
- PCS EMS
- BATTERY /6000 CYCLES

[Why are there wind turbines stopped if there is wind](#)

We will explain why we see wind turbines stopped even though there is enough wind to generate electricity.

Why Do Wind Turbines Stop?

We will explain why we see wind turbines stopped even though there is enough wind to generate electricity.



Why Do Some Wind Turbines Not Turn

Wondering why some wind turbines aren't spinning? Discover the real reasons turbines stop or appear stationary, how they work, and what's normal. Get clear answers to common turbine ...

[Why Are Some Wind Turbines Not Turning? Causes & Solutions](#)

Discover why some wind turbines aren't turning and find practical solutions! Explore common causes and expert tips to maximize renewable energy efficiency.



[Why Do Some Wind Turbines Stop Turning?](#)

In summary, several interconnected factors explain why some wind turbines do not spin: inadequate wind speeds, excessive wind challenges, mechanical complications, maintenance needs, ...

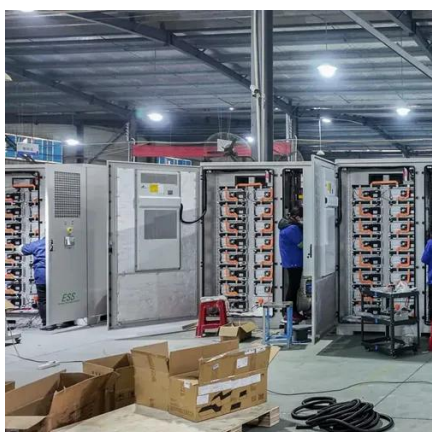


[Troubleshooting Common Wind Turbine](#)



Problems

Encountering issues with your turbine? This guide provides solutions to common problems and helps you keep your wind turbine running smoothly.



Wind Turbines Aren't Turning (Here's Why) , Power Generation

Wind turbines stop turning for two reasons. First, the mechanical aspect of the wind turbine needs maintenance. Second, there isn't enough wind for the wind turbine to be turning. Alternatively, there's ...

Why Do Wind Turbines Stop?

Wind turbines are complex structures, designed to produce maximum renewable energy only when it is safe to do so. Let's explore why a wind turbine stops moving.



Why Isn't Your Wind Turbine Rotating? 7 Critical Causes and Modern

As of 2024, 12% of operational wind turbines experience unexpected rotation stoppages annually, costing the industry \$2.3 billion in lost energy production. Let's break down what's really ...





Contact Us

For catalog requests, pricing, or partnerships, please visit:

<https://id2market.eu>

Phone: +34 910 56 87 45

Email: info@id2market.eu

Scan the QR code to access our WhatsApp.

