



# Solar battery cabinet charging current limit





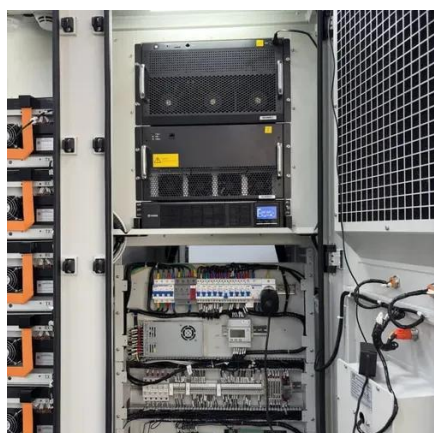
## Overview

---

To work out the maximum charge/discharge power of the battery you will multiply this current (A) by the BMS voltage. The BMS voltage of a battery will vary between make/model/manufacturer so always refer to your batteries datasheet/manual for the correct current . I have a 12V, 200Ah lead acid tubular battery which I charge with solar panels using a PWM or MPPT charge controller. PV array specs are: As we know, during the first bulk charging stage, chargers apply a constant high current to the battery. 5A, which I imagine i want to get as close to as possible in order to charge the battery as quickly as possible, but looking at descriptions of charge controllers it. Proper ventilation for battery cabinets is the primary defense, ensuring a constant flow of air to carry heat away and maintain the cells within their optimal temperature range.



## Solar battery cabinet charging current limit



### over paneling and lowering max charge current in MPPT Solar charge

Some MPPT Solar charge controllers have the capability of supporting over paneling AND limiting the maximum charge current for the battery below SCC's max limit.

### [Checklist: Venting Clearance and Code Rules for ...](#)

Stop battery overheating. This checklist details essential venting clearance and code rules for safe, compliant battery cabinet installation.



### Limiting current into solar battery charger : r/AskElectronics

That's a pretty typical current limiting circuit. You may need to adjust the .45 ohm resistor, I would get a .47 5W and have a few low ohm 1W resistors on hand to trim the resistance for the ...

### AC Limit

Set the AC Input Current Limit to 52A (or the generator's rated maximum continuous output current.) The inverter chargers' maximum AC input is 20AAC. This converts to a maximum ...



2MW / 5MWh  
Customizable

## What is the maximum charging current for a lithium solar battery?

The maximum charging current for a lithium solar battery depends on several factors, including battery chemistry, capacity, temperature, and charger specifications.

### [Looking for help understanding maximum charging current](#)

On the brink of setting up my first solar system as part of my van conversion. And am trying to work out what MPPT solar charge controller is required.



### [Limiting Solar Charge Current from the Charge Controller](#)

A little known setting for the Classic 150 is the ability to Limit Charging Amps Only WITHOUT limiting total output amps for opportunity loads. This is a setting that is not easily ...

## Limiting the battery charging current



## / voltage using PWM or MPPT

The power of solar panels should match the battery capacity as much as possible, otherwise it will easily do abnormal charging. The best charging current for the battery is 10%-20% of ...



## Limiting the battery charging current / voltage using ...

The power of solar panels should match the battery capacity as ...



## Solar Charge Current Limit and Load Current

You then set the maximum charge current in the GX device and this controls the attached devices including the Multiplus as that will also be connected. See the Cerbo GX manual DVCC section.



## Selecting Battery Charge/Discharge Rates

When selecting the charge and discharge current limits you will always be limited to the lowest current value whether that is the inverter or the batteries. For example, the 3.6kW Ecco ...





## Contact Us

---

For catalog requests, pricing, or partnerships, please visit:

<https://id2market.eu>

Phone: +34 910 56 87 45

Email: [info@id2market.eu](mailto:info@id2market.eu)

Scan the QR code to access our WhatsApp.

