



Solar container battery voltage is too low





Overview

Fast drain, slow charging, or frequent errors = failing solar battery. Test with a multimeter: 12V should read ~12. Replace if past lifespan or. Now today when I checked the battery I noticed that the voltage is at 12. There are several common causes, and many can be resolved with a few simple checks. This often results from a malfunction in the battery. Ever found yourself in the middle of a sunny day, only to realize your solar battery is running low?

It can be a frustrating moment, especially when you rely on that energy for your daily needs.



Solar container battery voltage is too low



6. Troubleshooting Guide

If the battery voltage is getting low and a large load is applied to the AC output the inverter is unable to maintain the proper output voltage. Re-charge the battery or reduce the AC loads to continue operation.

[How Do I Know If My Solar Battery Is Bad? Simple Test](#)

How do I know if my solar battery is bad? Your solar battery is bad if it drains quickly, takes too long to charge, overheats, leaks, or shows consistent low voltage readings.



[Troubleshooting Solar Panel Output: Low or No Charge Issues](#)

If your solar panel system isn't delivering the expected charge--or no charge at all--don't worry. There are several common causes, and many can be resolved with a few simple checks. This ...

What to Do When Solar Battery Is Low: Essential Steps to Maximize

This article provides essential tips on managing low charge situations effectively, covering the types of solar batteries, common issues, and immediate actions to take.



Battery voltage is too low and I have no way to charge , DIY Solar

I decided to assemble the battery and with that my whole system, knowing that the battery would be running without a BMS, and I would have to be careful. Now today when I checked ...

Optimized Guide: How to Diagnose and Troubleshoot 12.8V LiFePO4 Solar

Voltage irregularities: Total voltage too high or low, or uneven cell voltages. Capacity fade: Reduced energy storage, shortening system runtime. Charging/discharging issues: The battery ...



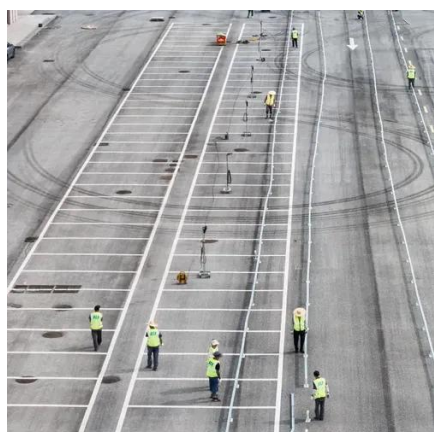
[How to check if solar battery is not storing electricity](#)

Monitoring voltage levels is crucial; low voltage may indicate storage failure. Moreover, the number of charge cycles offers insights; a battery used beyond its optimal cycles may lose ...



Ultimate Guide to Solar Battery Charging: SOC, Voltage, & BMS Tips

We'll break down SOC vs. voltage, fix charging issues, and share pro tips to keep your LiFePO4 or lead-acid battery in top shape. Plus, we've got charts and a handy formula to make it crystal clear.



[Battery Storage Issues in Solar Energy Systems](#)

It could be essential to use an external charger to charge the battery if the voltage is low. You can also increase the battery's capacity to hold a charge by monitoring the electrolyte levels and ...

[Common Issues with Solar Batteries and How to Fix Them](#)

Discover common issues with solar batteries and how to fix them to maintain efficiency extend battery life and optimize performance.





Contact Us

For catalog requests, pricing, or partnerships, please visit:

<https://id2market.eu>

Phone: +34 910 56 87 45

Email: info@id2market.eu

Scan the QR code to access our WhatsApp.

